

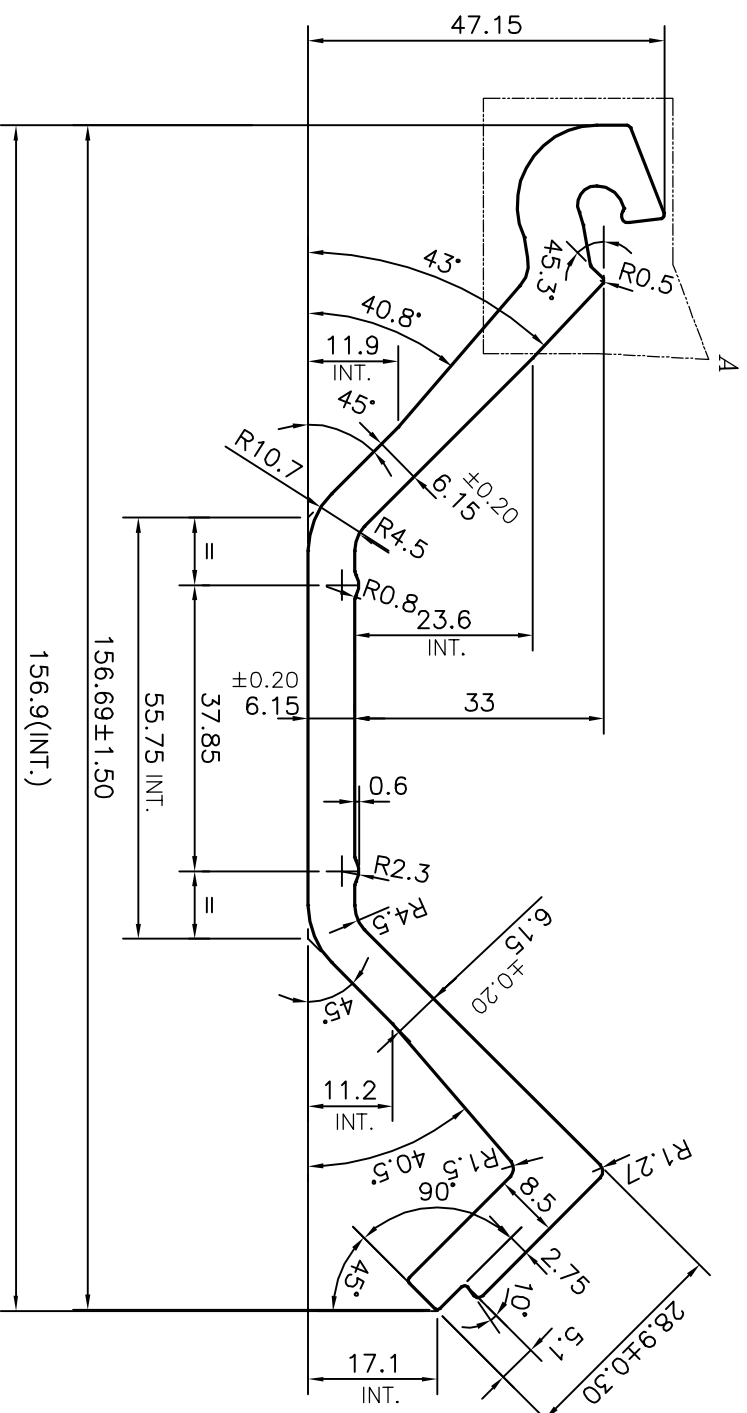
P-16885

E0603

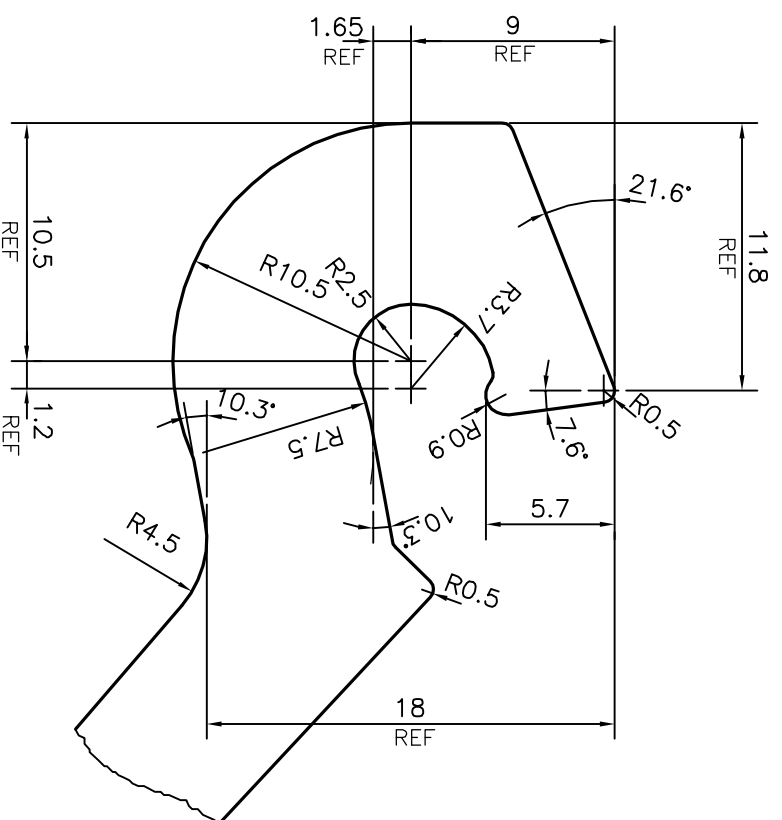
ISSUE-2
 2 PIP' ADDED & DIMENSION CHANGED FROM 28 TO 28.9, FROM 5 TO 5.9
 & ALSO FROM 156.78 TO 157.42
 WEIGHT ALSO CHANGED FROM 3.613 TO 3.637 kg/m

ISSUE-3
 DIMENSION CHANGED FROM 24 TO 37.9


ISSUE-4
 SHAPE CHANGED



UNSPECIFIED RADIUS 0.5 mm



DETAIL OF "A"
 SCALE 3:1

 SYMBOL OF QUALITY AN ISO 9001 COMPANY		JINDAL ALUMINIUM LTD. BANGALORE-560073 (INDIA)		NAME	DATE
				DRAWN	J.P.KAUSHIK
1. ALL DIMENSIONS ARE IN mm. 2. ROUND OFF ALL SHARP CORNERS WITH 0.40 mm. 3. TOLERANCES WILL BE AS PER IS:3965-1981 UNLESS OTHERWISE SPECIFIED		CHECKED			
		APPROVED	B.NATARAU	05-02-2018	
PARTY'S NAME		ULTRA ENGINEERS, PUNE		SCALE	1:1
PARTY'S DRAWING No.		AS PER AutocAD DRAWING		AREA mm ²	1372.892
ALLOY & TEMPER		6005 T6		PERIMETER mm.	411.555
DESCRIPTION		MISC. SECTION		WEIGHT kg/m	3.707
				DRAWING No.	
				SECTION No.	
				P-16885	
				E0603	E0603(ISSUE-4)