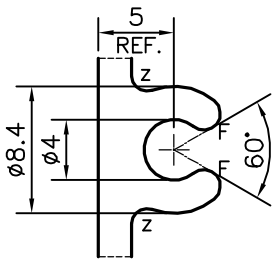
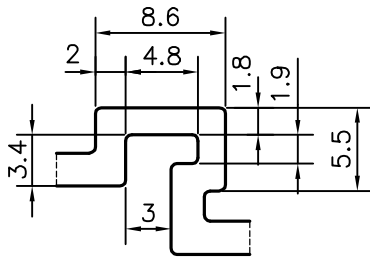


P-16934-1

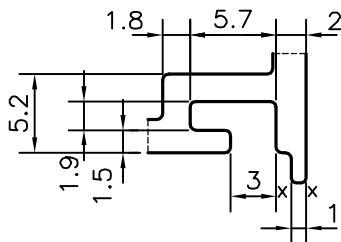
E0612



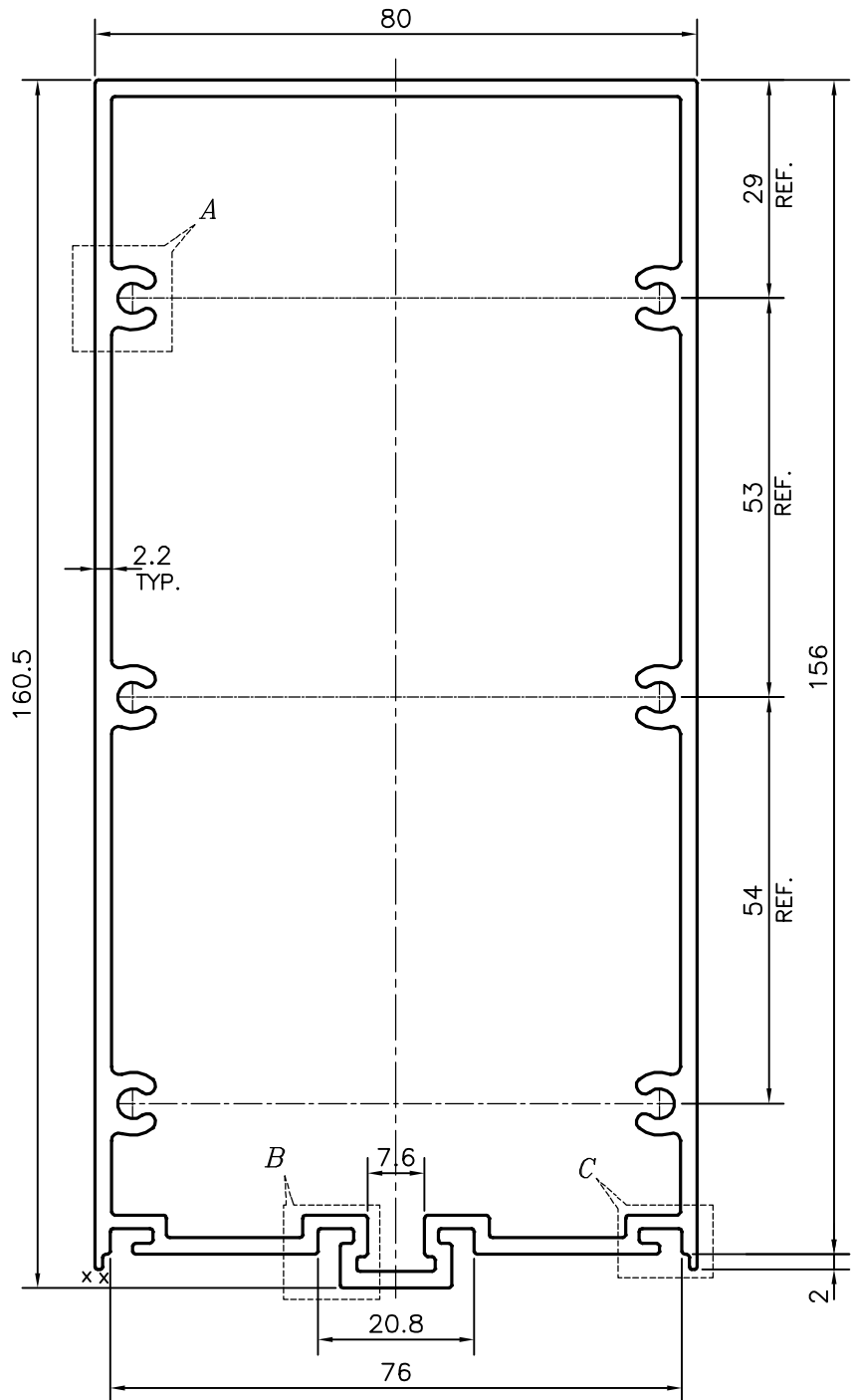
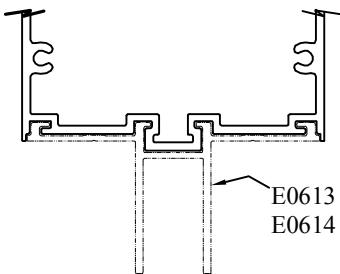
DETAIL OF "A"  
SCALE 2:1



DETAIL OF "B"  
SCALE 2:1



DETAIL OF "C"  
SCALE 2:1



1. STRAIGHTNESS=1.0mm/M
2. TWIST=1.0mm/M
3. ANGULARITY= ±1°
4. FLATNESS =0.007xWIDTH

X = RADIUS 0.3 mm. (4 PLACES)  
 F = FULL RADIUS (12 PLACES)  
 Z = RADIUS 1 mm. (12 PLACES)



SYMBOL OF QUALITY  
AN ISO 9001 COMPANY

**JINDAL ALUMINIUM LTD.**  
BANGALORE-560073 (INDIA)

	NAME	DATE
DRAWN	PARVESH	06-04-2017
CHECKED		
APPROVED	B.NATARAJA	08-04-2017
SCALE		1:1
AREA mm <sup>2</sup>		1265.621
PERIMETER mm.		528.878
WEIGHT kg/m		3.417
DRAWING No.	SECTION No.	
P-16934-1	-	
E0612	E0612	

1. ALL DIMENSIONS ARE IN mm.
2. ROUND OFF ALL SHARP CORNERS WITH 0.40 mm.
3. TOLERANCES WILL BE AS PER IS:6477-1983 , UNLESS OTHERWISE SPECIFIED

PARTY'S NAME	ALUFIT (INDIA) PRIVATE LIMITED, BANGALORE
PARTY'S DRAWING No.	AS PER AUTOCAD DRAWING-(ICC)-AL-03
ALLOY & TEMPER	6063 T6
DESCRIPTION	CURTAIN WALL SECTION-MID TRANSOM