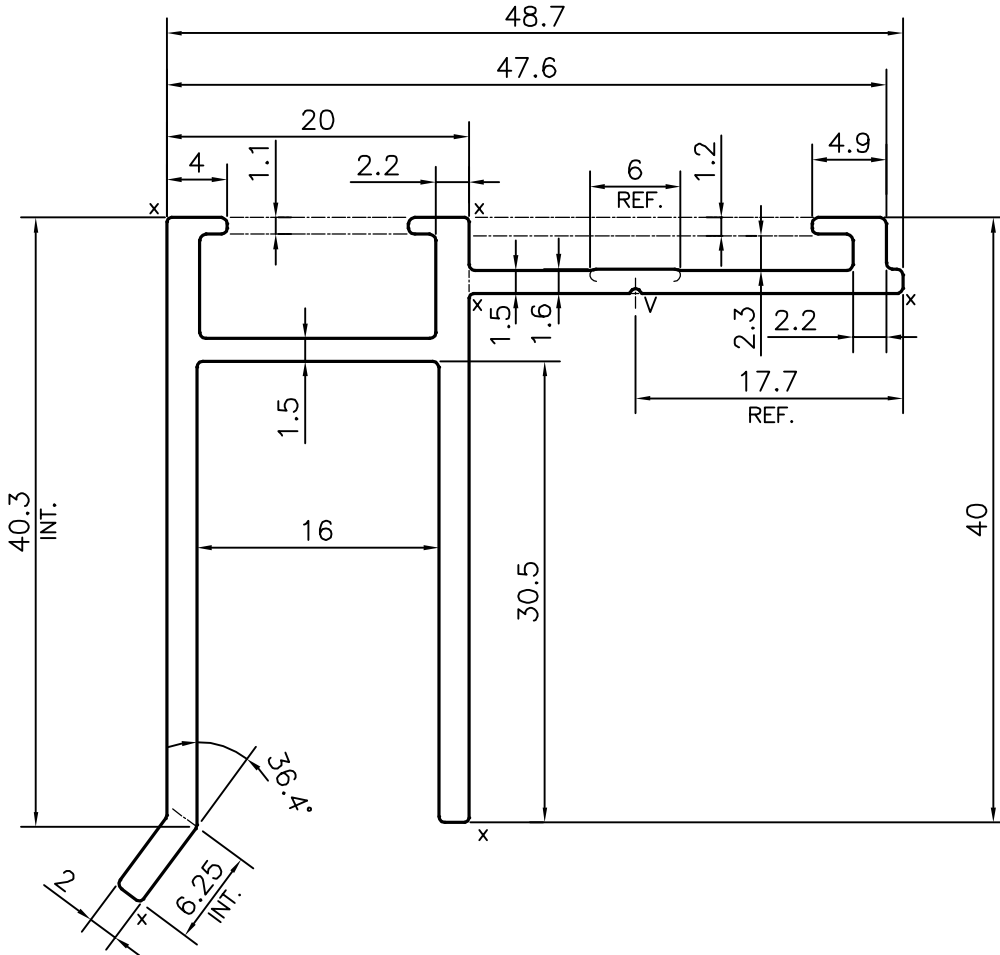
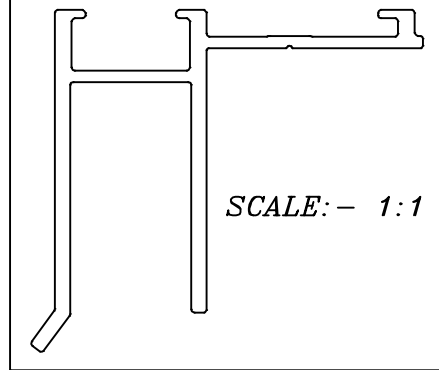


P-16936

E0614



- 1. STRAIGHTNESS=1.0mm/M
- 2. TWIST=1.0mm/M
- 3. ANGULARITY= ±1°
- 4. FLATNESS =0.007xWIDTH

X = RADIUS 0.3 mm. (6 PLACES)
 V = VEE GROOVE 0.3x90° (1 PLACE)



SYMBOL OF QUALITY
 AN ISO 9001 COMPANY

JINDAL ALUMINIUM LTD.
 BANGALORE-560073 (INDIA)

	NAME	DATE
DRAWN	PARVESH	01-04-2017
CHECKED		
APPROVED	B.NATARAJA	08-04-2017
SCALE		2:1
AREA mm ²		257.096
PERIMETER mm.		281.818
WEIGHT kg/m		0.694
DRAWING No.	SECTION No.	
P-16936	-	
E0614	E0614	

- 1. ALL DIMENSIONS ARE IN mm.
- 2. ROUND OFF ALL SHARP CORNERS WITH 0.40 mm.
- 3. TOLERANCES WILL BE AS PER IS:3965-1981 , UNLESS OTHERWISE SPECIFIED

PARTY'S NAME	ALUFIT (INDIA) PRIVATE LIMITED, BANGALORE
PARTY'S DRAWING No.	AS PER AUTOCAD DRAWING-(ICC)-AL-18
ALLOY & TEMPER	6063 T6
DESCRIPTION	CURTAIN WALL SECTION-TRANSOM EDGE GUARD AT OPENABLE AREA