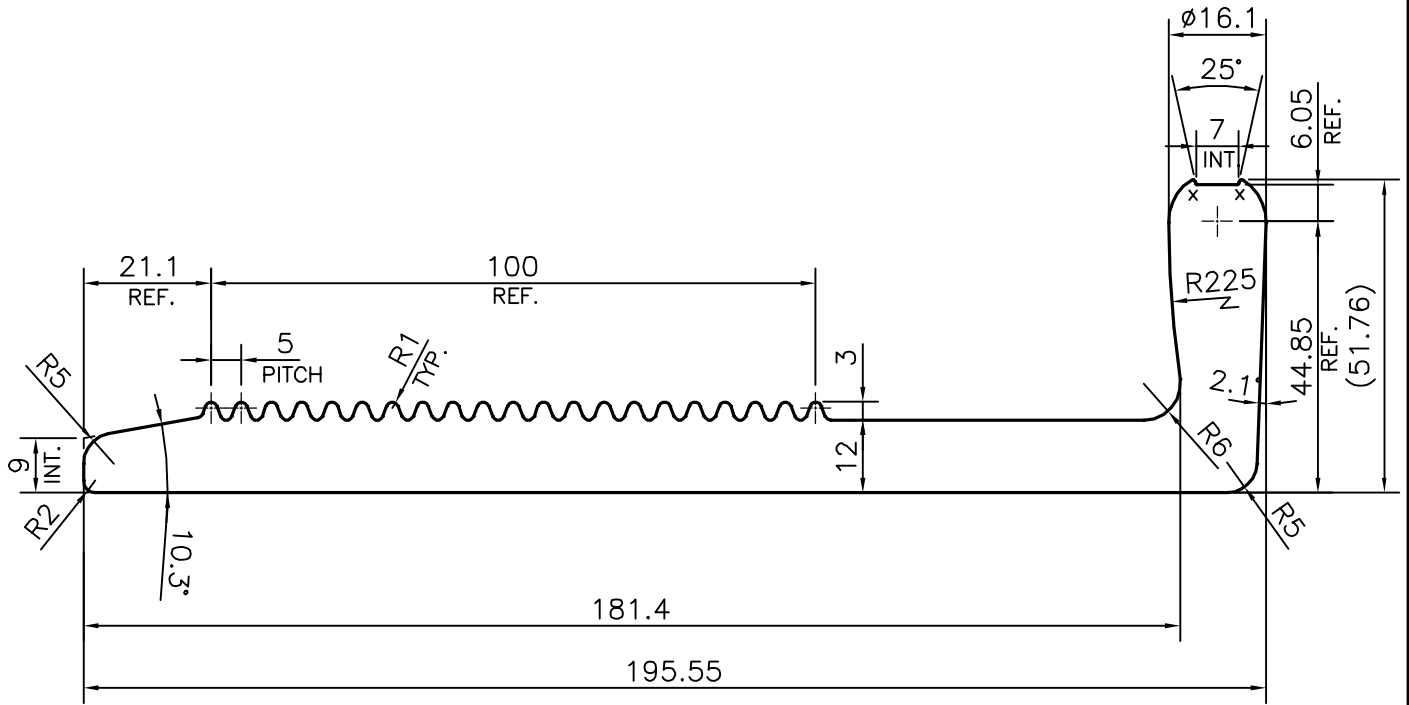



P-16938

E0616



- 1. STRAIGHTNESS=1.0mm/M
- 2. TWIST=1.0mm/M
- 3. ANGULARITY= ±1°
- 4. FLATNESS =0.007xWIDTH

X = RADIUS 0.3 mm. (2 PLACES)

| | | | |
|--|--|----------------------|-----------------------|
|  SYMBOL OF QUALITY AN ISO 9001 COMPANY | JINDAL ALUMINIUM LTD. BANGALORE-560073 (INDIA) | NAME | DATE |
| | | DRAWN | PARVESH 01-04-2017 |
| | | CHECKED | |
| | | APPROVED | B.NATARAJA 08-04-2017 |
| 1. ALL DIMENSIONS ARE IN mm. 2. ROUND OFF ALL SHARP CORNERS WITH 0.40 mm. 3. TOLERANCES WILL BE AS PER IS:3965-1981 , UNLESS OTHERWISE SPECIFIED | | SCALE | 0.8:1 |
| | | AREA mm ² | 3028.662 |
| | | PERIMETER mm. | 554.25 |
| | | WEIGHT kg/m | 8.177 |
| PARTY'S NAME | ALUFIT (INDIA) PRIVATE LIMITED, BANGALORE | DRAWING No. | SECTION No. |
| PARTY'S DRAWING No. | AS PER AUTOCAD DRAWING-(ICC)-AL-24 | P-16938 | - |
| ALLOY & TEMPER | 6005 T6 | E0616 | E0616 |
| DESCRIPTION | CURTAIN WALL SECTION-FLOOR MOUNTED BRACKET TYPE-02 | | |