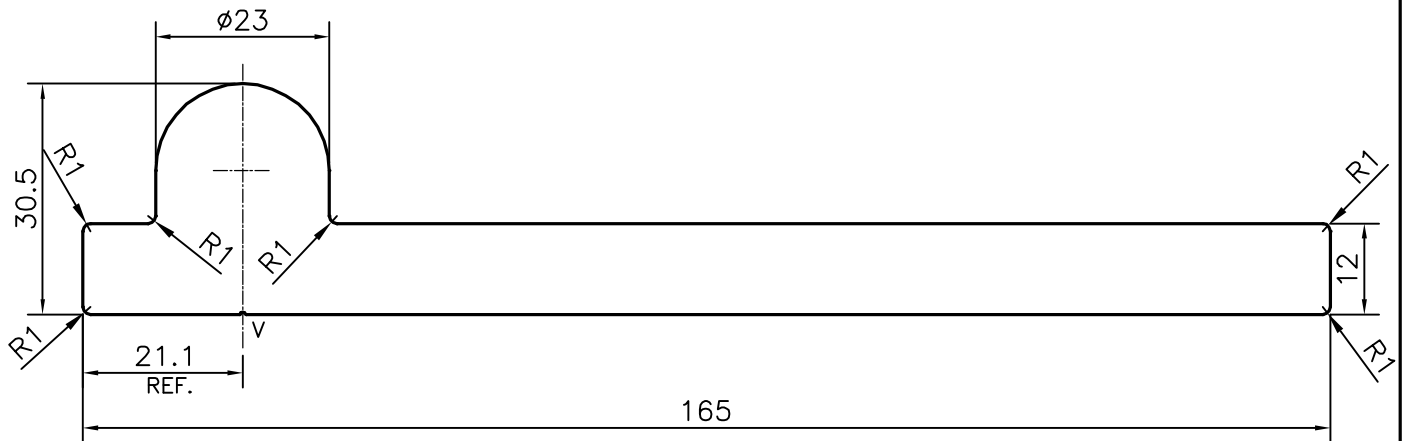



P-16941

E0619



1. STRAIGHTNESS=1.0mm/M
2. TWIST=1.0mm/M
3. ANGULARITY= $\pm 1^\circ$
4. FLATNESS =0.007xWIDTH

V = VEE GROOVE 0.3x90° (1 PLACE)

 SYMBOL OF QUALITY AN ISO 9001 COMPANY	JINDAL ALUMINIUM LTD. BANGALORE-560073 (INDIA)		NAME	DATE
		DRAWN	PARVESH	01-04-2017
		CHECKED		
		APPROVED	B.NATARAJA	08-04-2017
1. ALL DIMENSIONS ARE IN mm. 2. ROUND OFF ALL SHARP CORNERS WITH 0.40 mm. 3. TOLERANCES WILL BE AS PER IS:3965-1981 , UNLESS OTHERWISE SPECIFIED		SCALE		1:1
		AREA mm ²		2348.148
PARTY'S NAME ALUFIT (INDIA) PRIVATE LIMITED, BANGALORE		PERIMETER mm.		378.776
		WEIGHT kg/m		6.340
PARTY'S DRAWING No. AS PER AUTOCAD DRAWING-(ICC)-AL-27		DRAWING No.		SECTION No.
		P-16941		-
ALLOY & TEMPER 6005 T6		E0619		E0619
DESCRIPTION CURTAIN WALL SECTION-HOOK BRACKET				