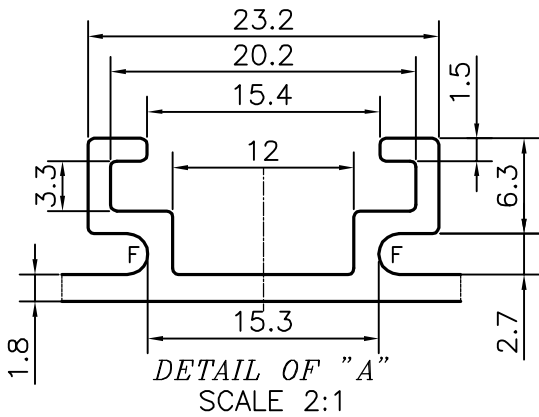
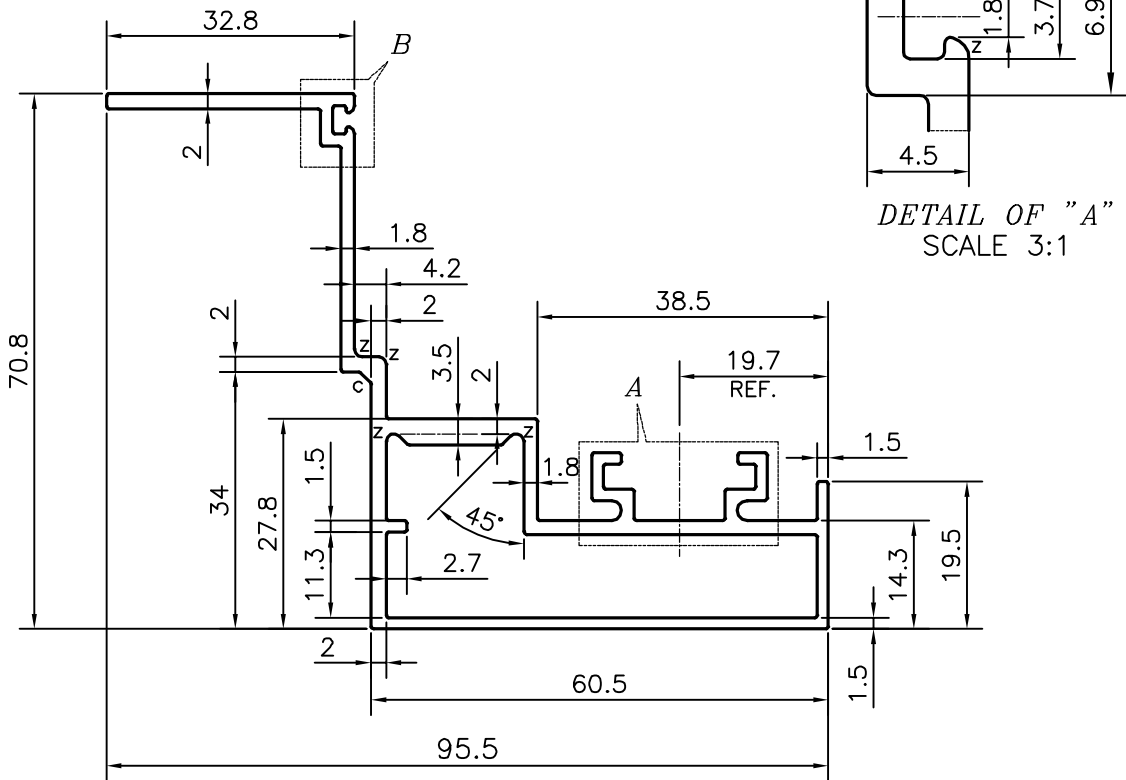


P-16943


E0621



- 1. STRAIGHTNESS=1.0mm/M
- 2. TWIST=1.0mm/M
- 3. ANGULARITY= ±1°
- 4. FLATNESS =0.007xWIDTH

C = CHAMFER 1.5x90° (1 PLACE)
 F = FULL RADIUS (2 PLACES)
 Z = RADIUS 1 mm. (6 PLACES)

ROUND OFF ALL SHARP CORNERS WITH 0.30 mm.

 SYMBOL OF QUALITY AN ISO 9001 COMPANY	JINDAL ALUMINIUM LTD. BANGALORE-560073 (INDIA)	NAME	DATE
		DRAWN	PARVESH 01-04-2017
		CHECKED	
		APPROVED	B.NATARAJA 08-04-2017
		SCALE	1:1
		AREA mm ²	529.357
		PERIMETER mm.	404.35
		WEIGHT kg/m	1.429
PARTY'S NAME	ALUFIT (INDIA) PRIVATE LIMITED, BANGALORE	DRAWING No.	SECTION No.
PARTY'S DRAWING No.	AS PER AUTOCAD DRAWING-(ICC)-AL-23	P-16943	-
ALLOY & TEMPER	6063 T6	E0621	E0621
DESCRIPTION	CURTAIN WALL SECTION-TOP HUNG SHUTTER PROFILE		