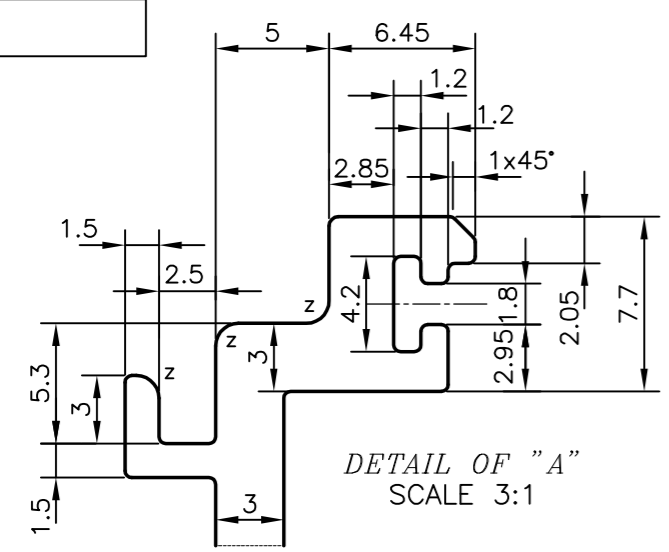
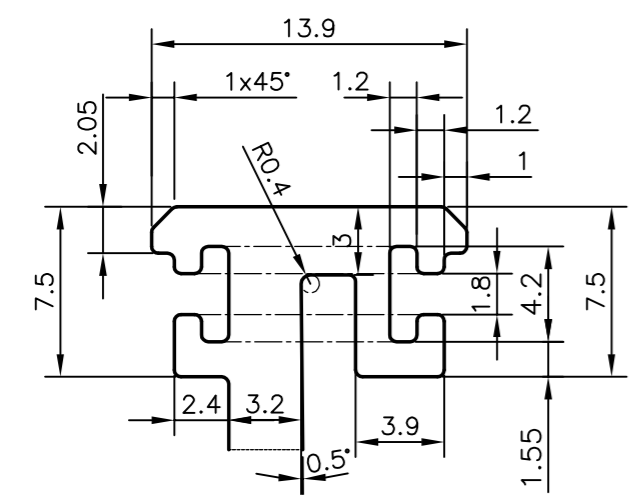


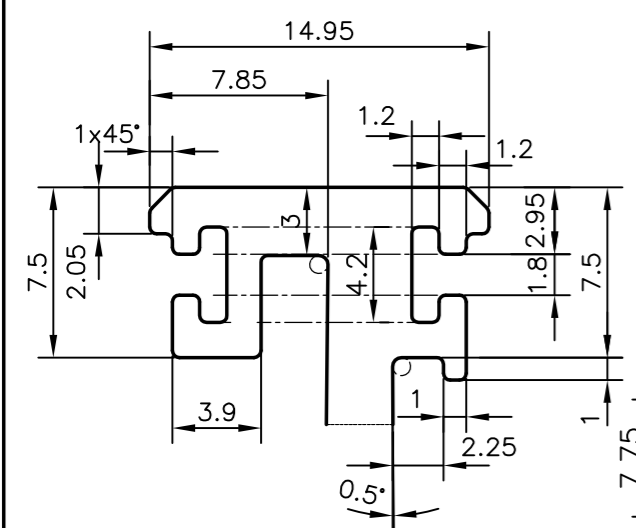
P-16952
E0630



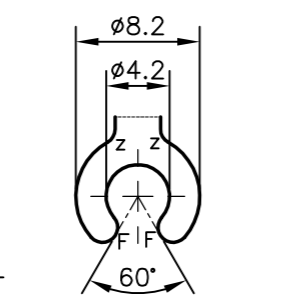
DETAIL OF "A"
SCALE 3:1



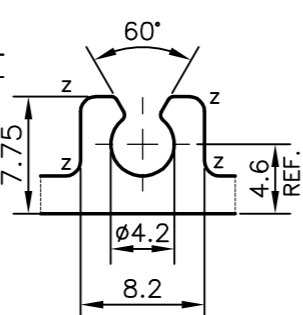
DETAIL OF "B"
SCALE 3:1



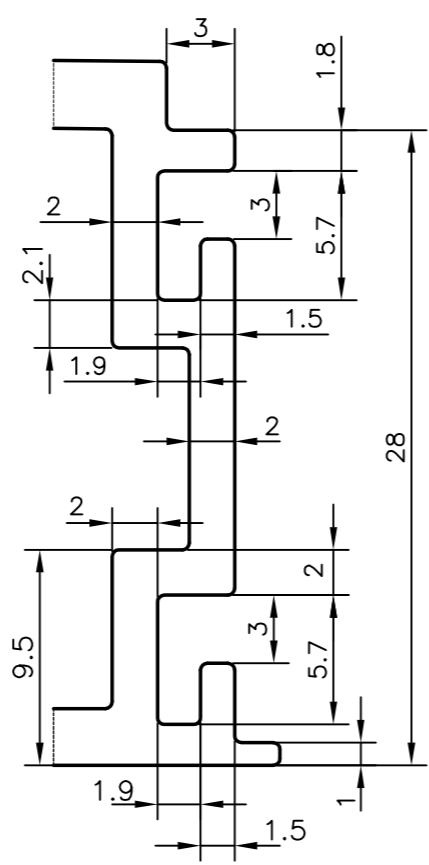
DETAIL OF "F"
SCALE 3:1



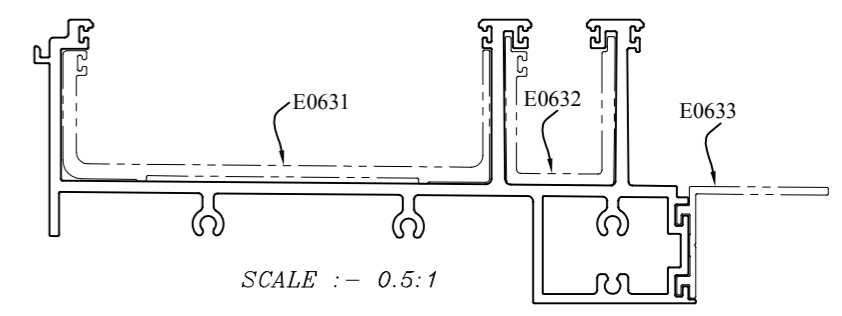
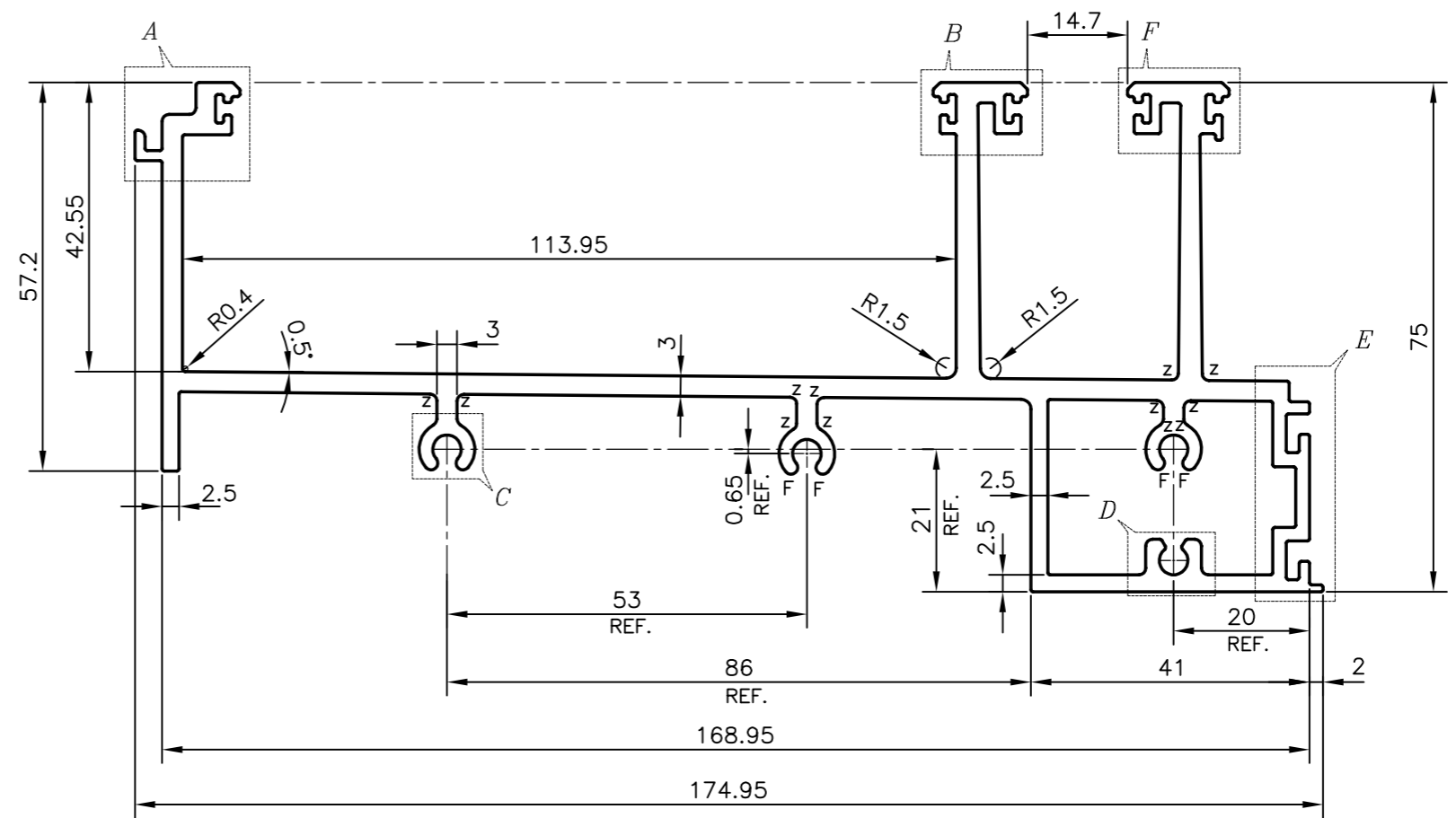
DETAIL OF "C"
SCALE 2:1



DETAIL OF "D"
SCALE 2:1



DETAIL OF "E"
SCALE 3:1



F = FULL RADIUS (6 PLACES)
Z = RADIUS 1 mm. (19 PLACES) **ROUND OFF ALL SHARP CORNERS WITH 0.30 mm.**

TOLERANCES ON OVERALL WIDTHS & WIDTHS ACROSS FLATS OF BARS, & REGULAR SECTIONS			
UPTO 6.40mm - ±0.20	UPTO 32.0mm - ±0.38	UPTO 120.0mm - ±0.85	1. STRAIGHTNESS=1.0mm/M 2. TWIST=1.0mm/M 3. ANGULARITY= ±1° 4. FLATNESS =0.007xWIDTH
UPTO 10.0mm - ±0.23	UPTO 50.0mm - ±0.46	UPTO 160.0mm - ±1.02	
UPTO 12.0mm - ±0.25	UPTO 60.0mm - ±0.53	UPTO 200.0mm - ±1.14	
UPTO 16.0mm - ±0.28	UPTO 80.0mm - ±0.69	UPTO 250.0mm - ±1.40	
UPTO 25.0mm - ±0.30	UPTO 100.0mm - ±0.75	UPTO 300.0mm - ±1.65	

 SYMBOL OF QUALITY AN ISO 9001 COMPANY	JINDAL ALUMINIUM LTD. BANGALORE-560073 (INDIA)	NAME	DATE
		DRAWN	PARVESH 01-04-2017
		CHECKED	
		APPROVED	B.NATARAJA 08-04-2017
		SCALE	1:1
		AREA mm ²	1476.071
		PERIMETER mm.	908.366
		WEIGHT kg/m	3.985
PARTY'S NAME	ALUFIT (INDIA) PRIVATE LIMITED, BANGALORE	DRAWING No.	SECTION No.
PARTY'S DRAWING No.	AS PER AUTOCAD DRAWING-(ICC)-AL-04	P-16952	-
ALLOY & TEMPER	6063 T6	E0630	E0630
DESCRIPTION	CURTAIN WALL SECTION-HEAD TRANSOM-01		