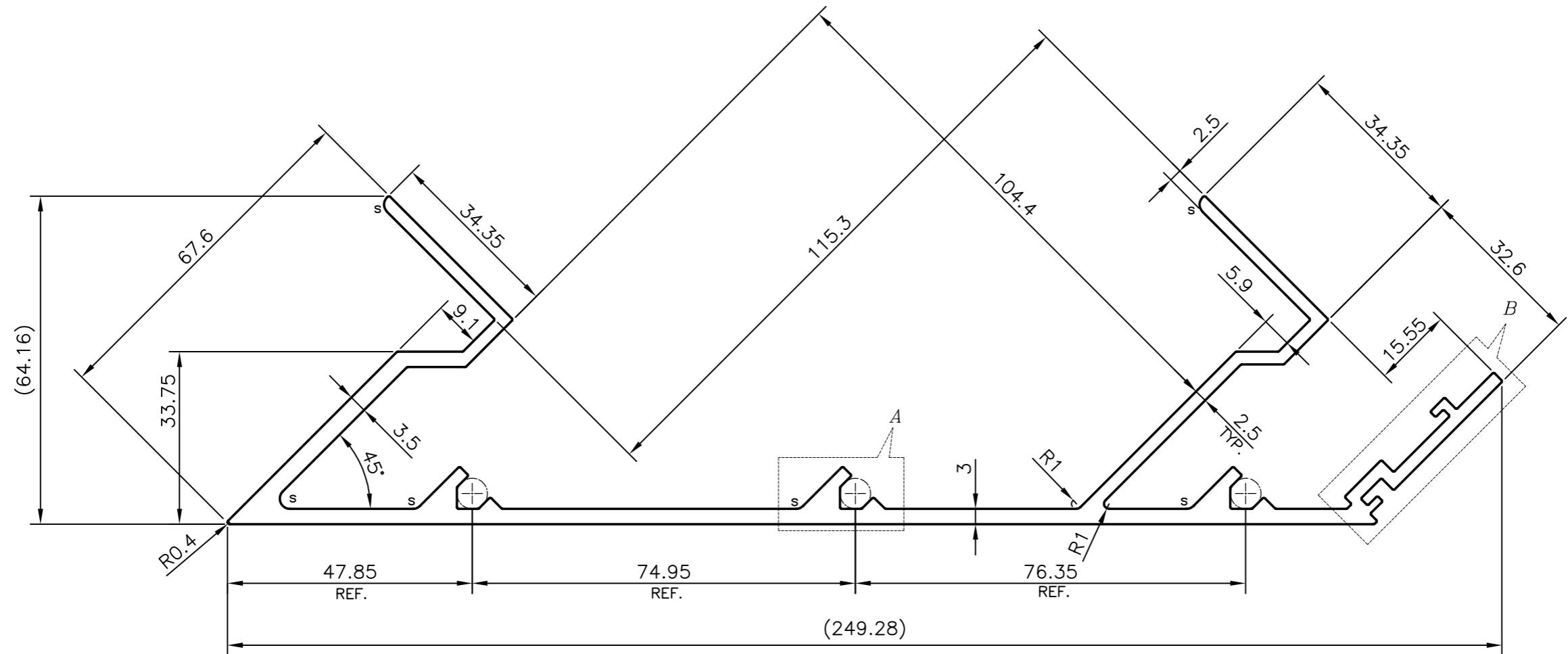
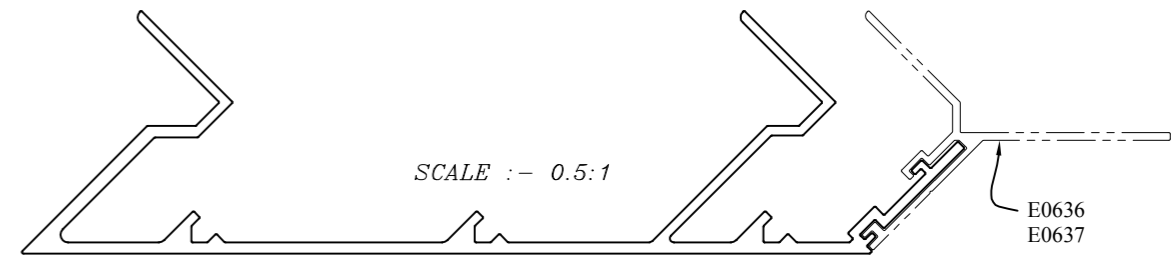


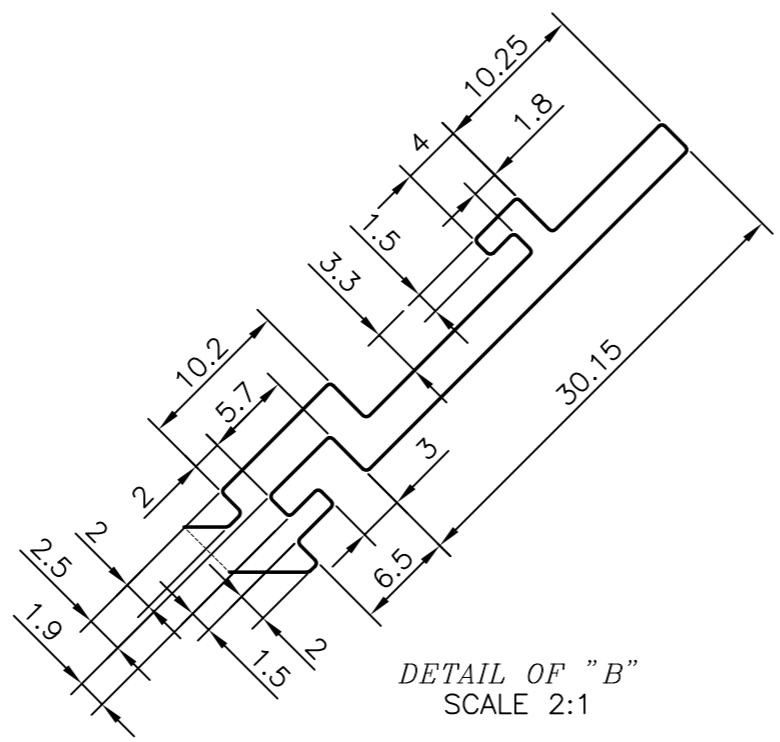
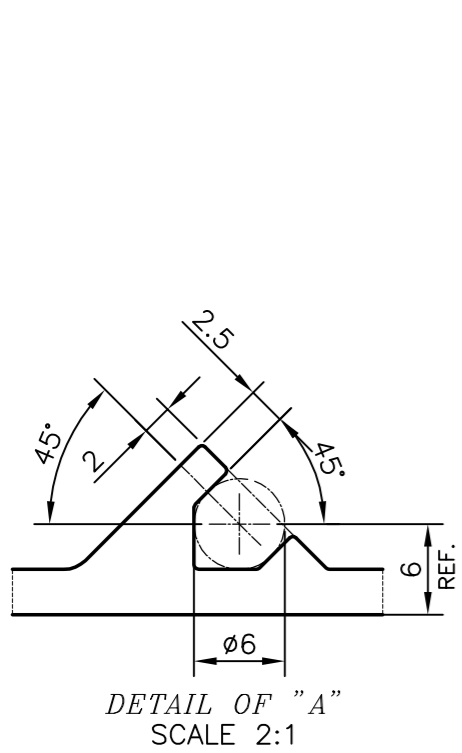
P-16960  
E0634




S = RADIUS 2 mm. (6 PLACES)

1. STRAIGHTNESS=1.0mm/M
2. TWIST=1.0mm/M
3. ANGULARITY= ±1°
4. FLATNESS =0.007xWIDTH

UNSPECIFIED CORNERS RADIUS WILL BE 0.30 mm.



 SYMBOL OF QUALITY AN ISO 9001 COMPANY	<b>JINDAL ALUMINIUM LTD.</b> BANGALORE-560073 (INDIA)		NAME	DATE
	DRAWN	PARVESH	07-04-2017	
	CHECKED			
	APPROVED	B.NATARAJA	12-04-2017	
1. ALL DIMENSIONS ARE IN mm. 2. ROUND OFF ALL SHARP CORNERS WITH 0.40 mm. 3. TOLERANCES WILL BE AS PER IS:3965-1981, UNLESS OTHERWISE SPECIFIED			SCALE	1:1
			AREA mm <sup>2</sup>	1442.26
			PERIMETER mm.	966.612
PARTY'S NAME ALUFIT (INDIA) PRIVATE LIMITED, BANGALORE			WEIGHT kg/m	3.894
			DRAWING No.	SECTION No.
PARTY'S DRAWING No. AS PER AUTOCAD DRAWING-(ICC)-AL-19			P-16960	-
			E0634	E0634
ALLOY & TEMPER 6063 T6				
DESCRIPTION CURTAIN WALL SECTION-EXTERNAL CORNER MALE MULLION				