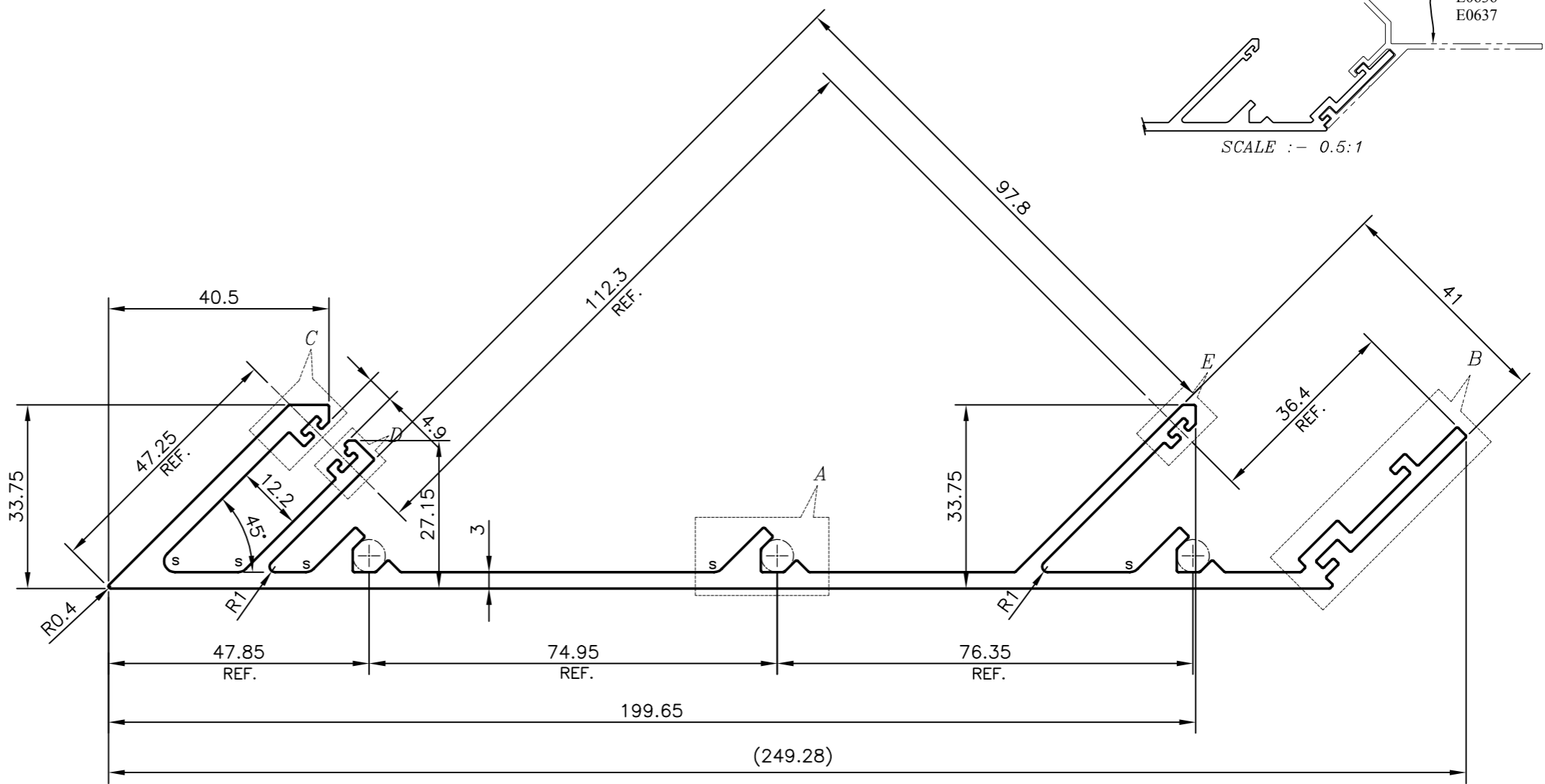
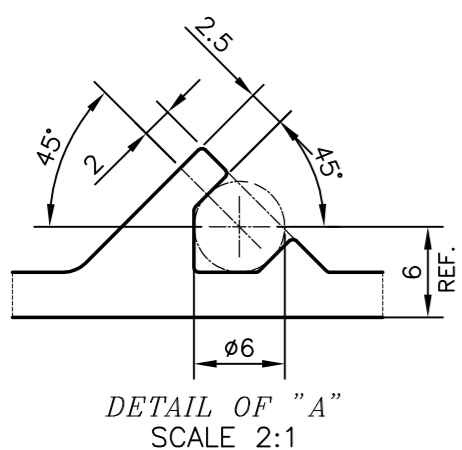
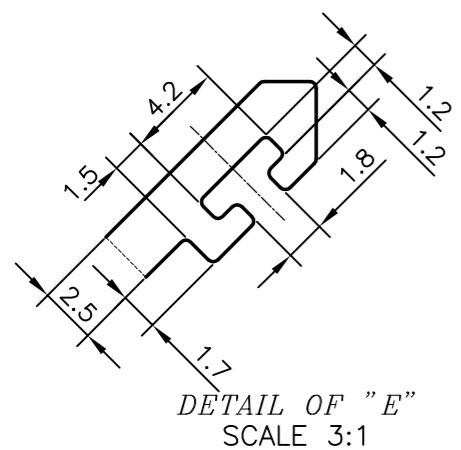
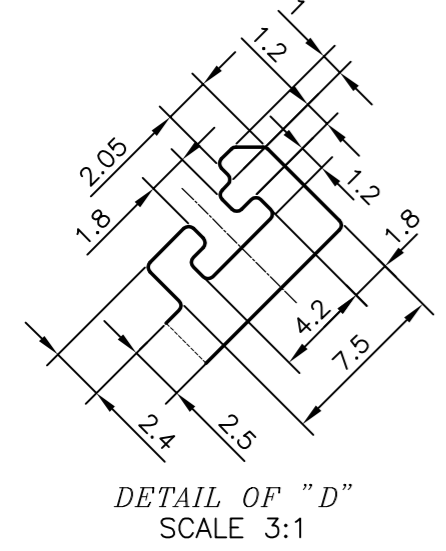
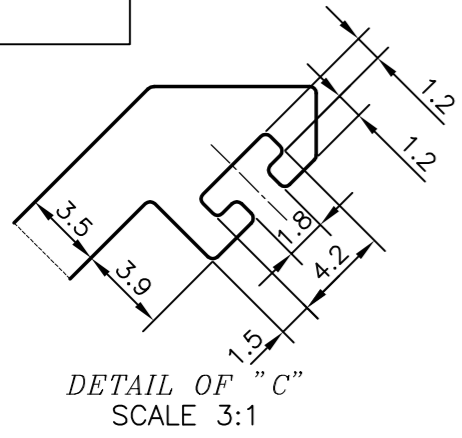
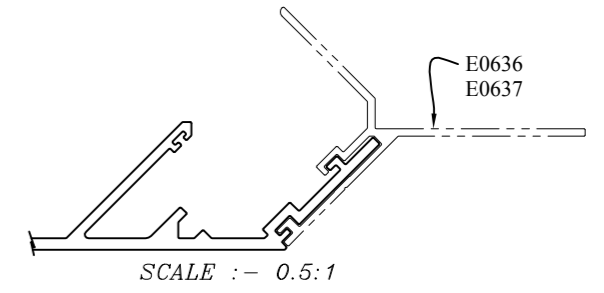
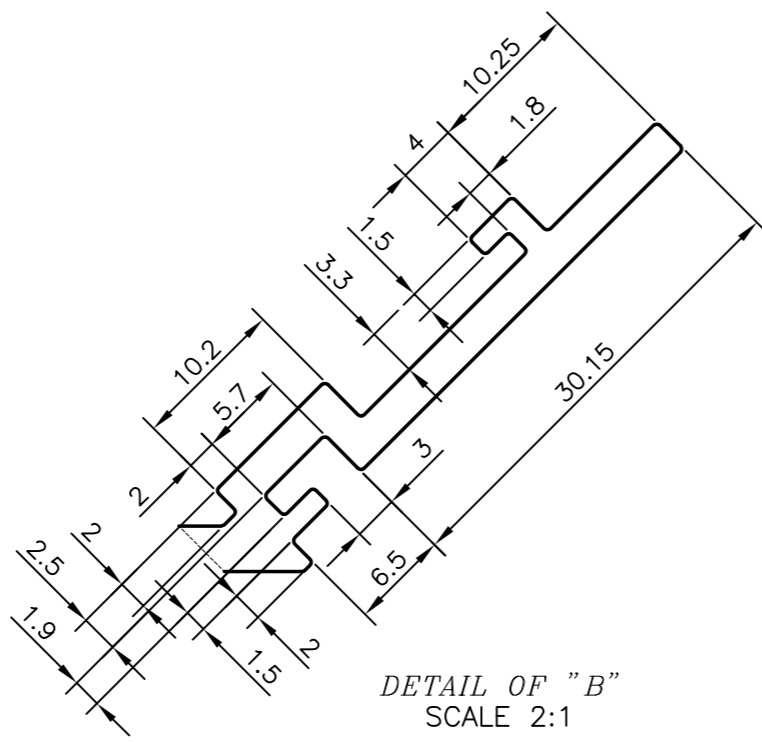



P-16961  
E0635



S = RADIUS 2 mm. (5 PLACES)



- 1. STRAIGHTNESS=1.0mm/M
  - 2. TWIST=1.0mm/M
  - 3. ANGULARITY= ±1°
  - 4. FLATNESS =0.007xWIDTH
- UNSPECIFIED CORNERS RADIUS WILL BE 0.30 mm.

 SYMBOL OF QUALITY AN ISO 9001 COMPANY	<b>JINDAL ALUMINIUM LTD.</b> BANGALORE-560073 (INDIA)		NAME	DATE
	PARTY'S NAME	ALUFIT (INDIA) PRIVATE LIMITED, BANGALORE	DRAWN	PARVESH 07-04-2017
PARTY'S DRAWING No.	AS PER AUTOCAD DRAWING-(ICC)-AL-21	CHECKED		
ALLOY & TEMPER	6063 T6	APPROVED	B.NATARAJA	12-04-2017
DESCRIPTION	CURTAIN WALL SECTION-EXTERNAL CORNER FEMALE MULLION	SCALE		1:1
		AREA mm <sup>2</sup>		1296.334
		PERIMETER mm.		861.514
		WEIGHT kg/m		3.500
		DRAWING No.	SECTION No.	
		P-16961	-	
		E0635	E0635	