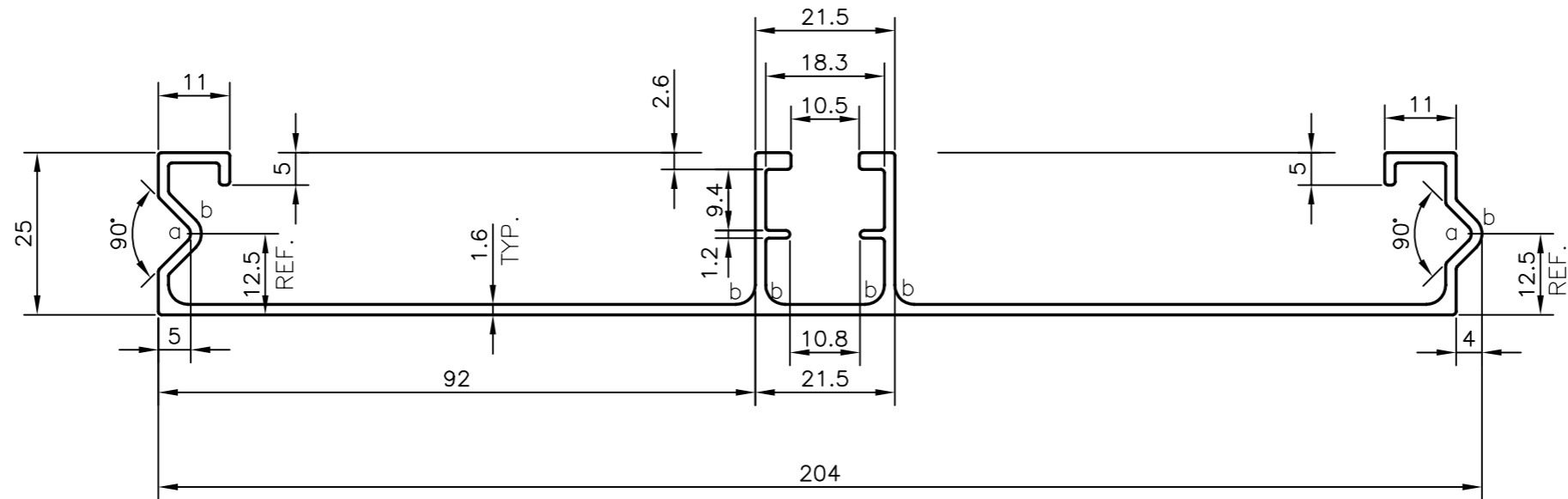



P-16916

S5348

E0641



a : 1.50 mm RADIUS (2 PLACES)
 b : 3.00 mm RADIUS (8 PLACES)

 SYMBOL OF QUALITY AN ISO 9001 COMPANY	JINDAL ALUMINIUM LTD. BANGALORE-560073 (INDIA)	NAME	DATE
		DRAWN	KIRAN 28-03-2017
		CHECKED	
		APPROVED	B.NATARAJ 01-04-2017
		SCALE	1:1
		AREA mm ²	562.46
		PERIMETER mm.	671.83
		WEIGHT kg/m	1.519
PARTY'S NAME	SARDE ROAD SAFTEY SYSTEMS, TRIVANDRUM	DRAWING No.	SECTION No.
PARTY'S DRAWING No.	AS PER SAMPLE	P-16916	-
ALLOY & TEMPER	HE9 WP	S5348	S5348
DESCRIPTION	MISC. SECTION	E0641	E0641

TOLERANCES ON OVERALL WIDTHS & WIDTHS ACROSS FLATS OF BARS, & REGULAR SECTIONS

UPTO 6.40mm - ±0.20	UPTO 32.0mm - ±0.38	UPTO 120.0mm - ±0.85	1. STRAIGHTNESS=1.7mm/M 2. TWIST=1.7mm/M 3. ANGULARITY= ±2° 4. FLATNESS =0.007xWIDTH
UPTO 10.0mm - ±0.23	UPTO 50.0mm - ±0.46	UPTO 160.0mm - ±1.02	
UPTO 12.0mm - ±0.25	UPTO 60.0mm - ±0.53	UPTO 200.0mm - ±1.14	
UPTO 16.0mm - ±0.28	UPTO 80.0mm - ±0.69	UPTO 250.0mm - ±1.40	
UPTO 25.0mm - ±0.30	UPTO 100.0mm - ±0.75	UPTO 300.0mm - ±1.65	