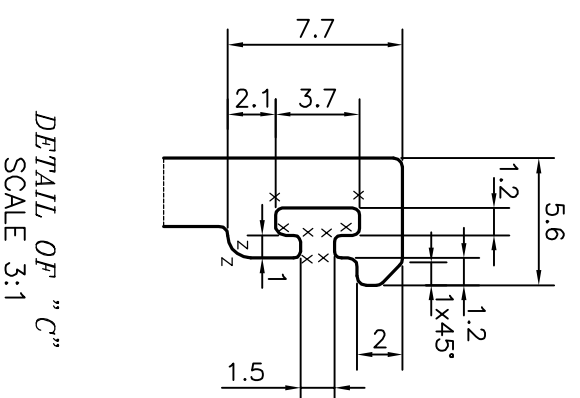
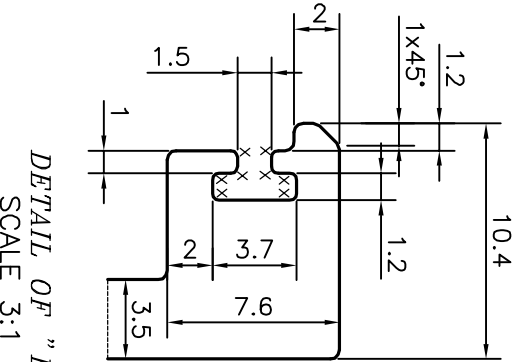
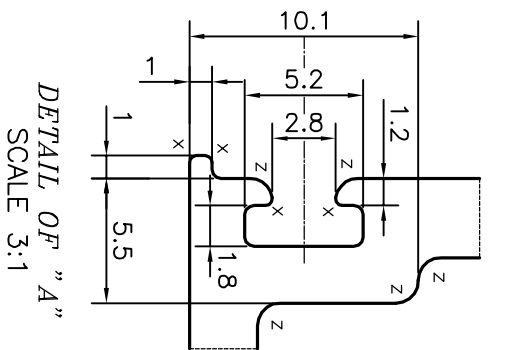
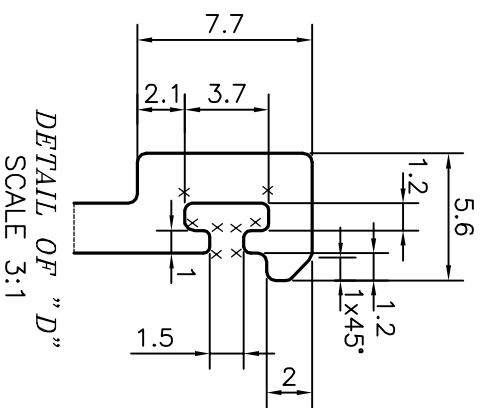
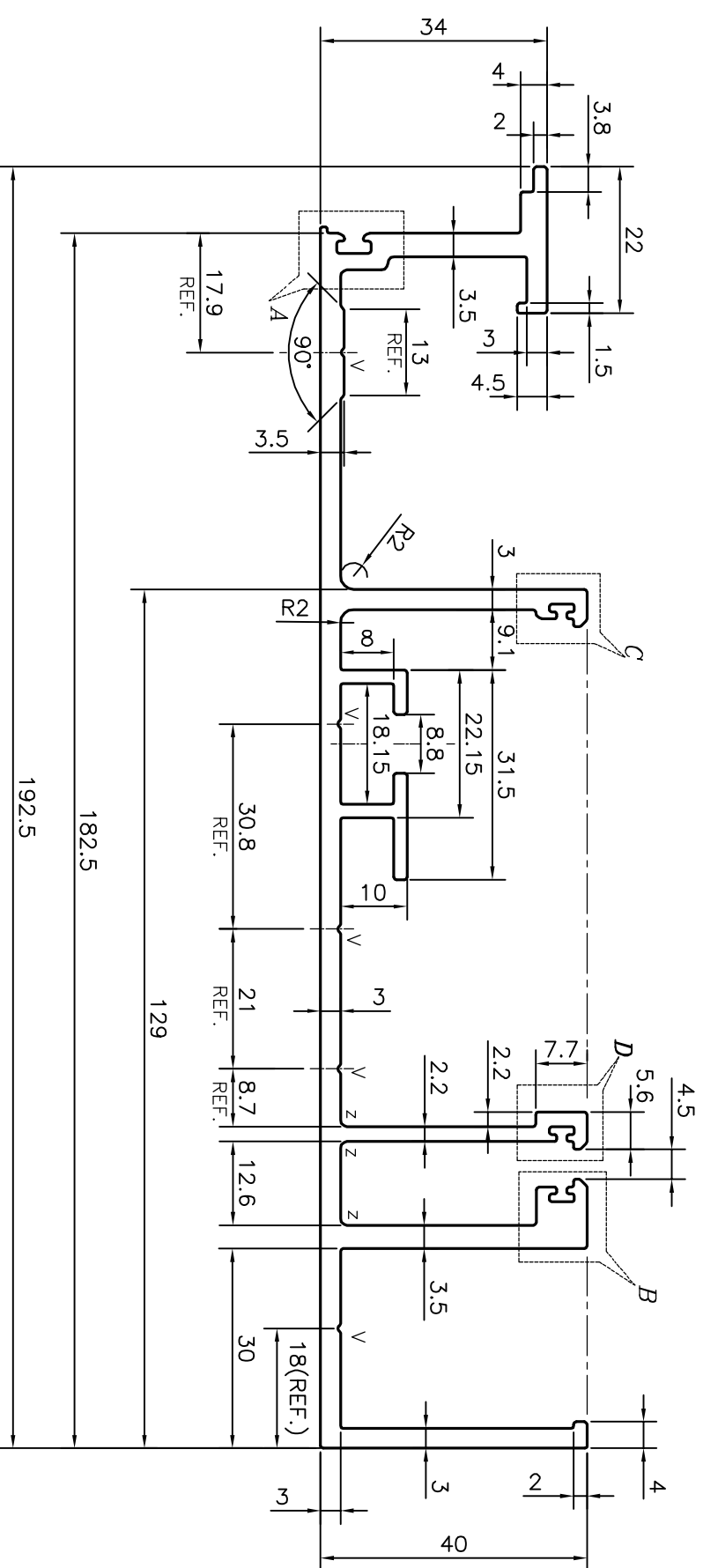
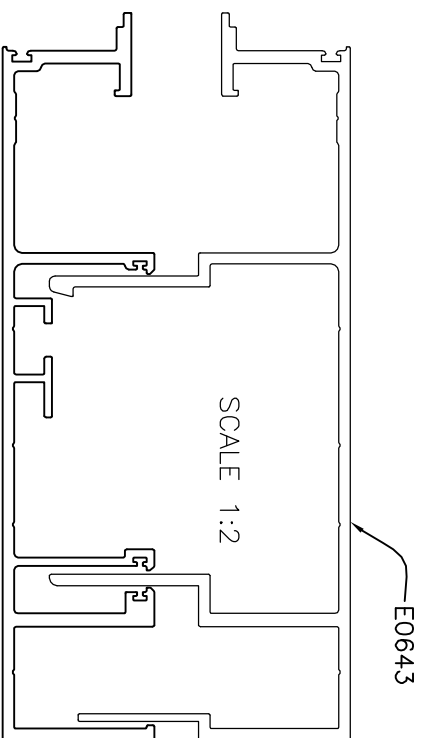


P-16727-1

E0642



X = RADIUS 0.3 mm. (20 PLACES)
Z = RADIUS 1 mm. (10 PLACES)
V = VEE GROOVE 0.4x90° (5 PLACES)

TOLERANCES ON OVERALL WIDTHS & WIDTHS ACROSS FLATS OF BARS, & REGULAR SECTIONS

UPTO 6.40mm - ±0.20	UPTO 32.0mm - ±0.38	UPTO 120.0mm - ±0.85
UPTO 10.0mm - ±0.23	UPTO 50.0mm - ±0.46	UPTO 160.0mm - ±1.02
UPTO 12.0mm - ±0.25	UPTO 60.0mm - ±0.53	UPTO 200.0mm - ±1.14
UPTO 16.0mm - ±0.28	UPTO 80.0mm - ±0.69	UPTO 250.0mm - ±1.40
UPTO 25.0mm - ±0.30	UPTO 100.0mm - ±0.75	UPTO 300.0mm - ±1.65

<p>SYMBOL OF QUALITY AN ISO 9001 COMPANY</p>		<p>JINDAL ALUMINIUM LTD. BANGALORE-560073 (INDIA)</p>	
<p>1. ALL DIMENSIONS ARE IN mm. 2. ROUND OFF ALL SHARP CORNERS WITH 0.40 mm. 3. TOLERANCES WILL BE AS PER IS:3965-1981, UNLESS OTHERWISE SPECIFIED</p>			
PARTY'S NAME		ALUFIT (INDIA) PRIVATE LIMITED, BANGALORE	
PARTY'S DRAWING No.		AS PER AUTOCAD DRAWING-LR-02	
ALLOY & TEMPER		6063 T6	
DESCRIPTION		CURTAIN WALL SECTION-FEMALE MULLION	

SCALE	1:1
AREA mm ²	1296.999
PERIMETER mm.	895.742
WEIGHT kg/m	3.502
DRAWING No.	P-16727-1
SECTION No.	-
DRAWING No.	E0642
SECTION No.	E0642