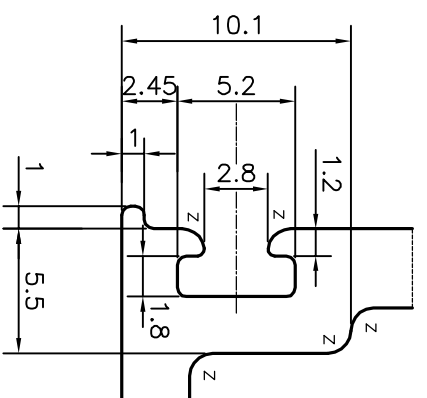
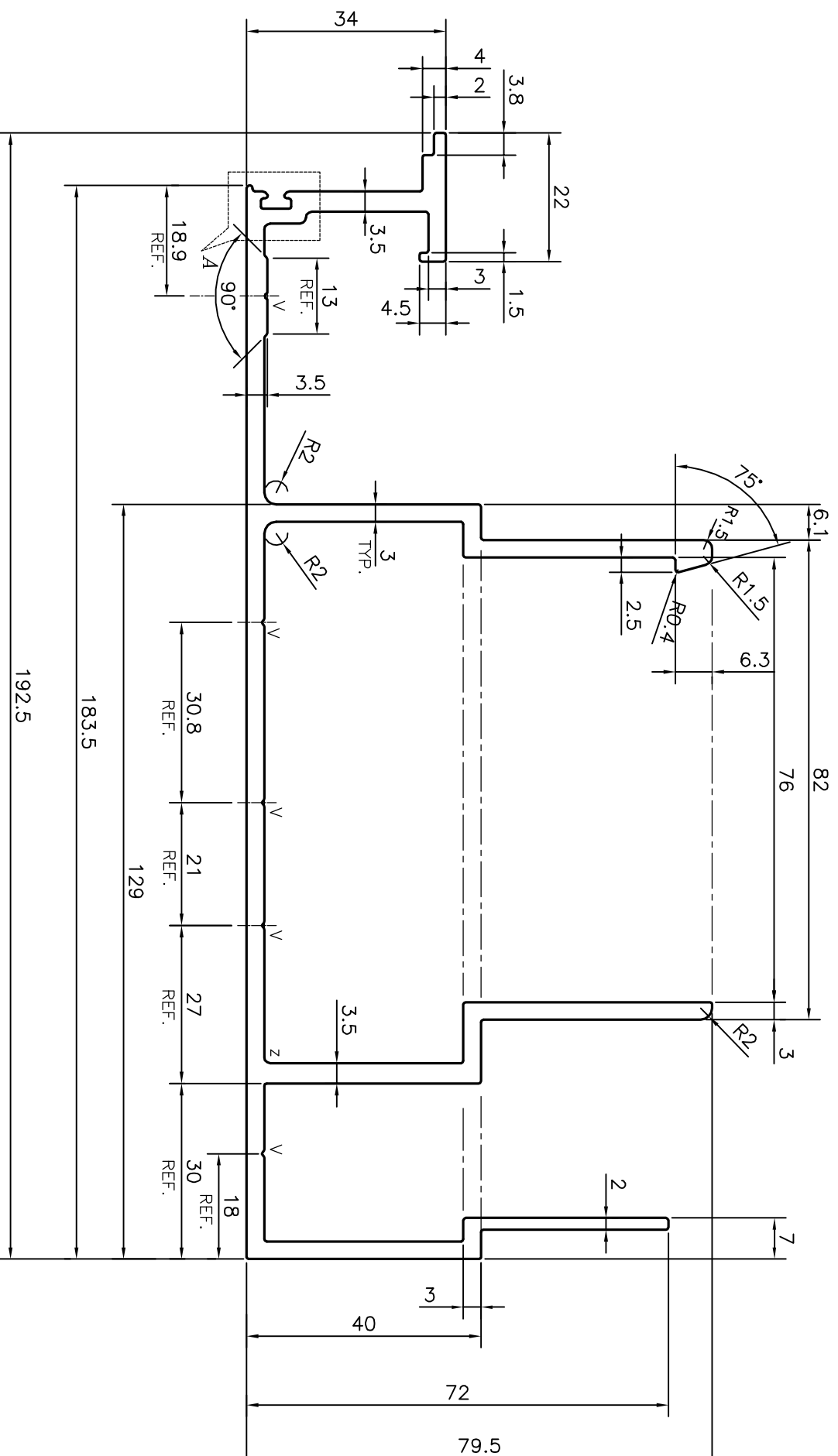
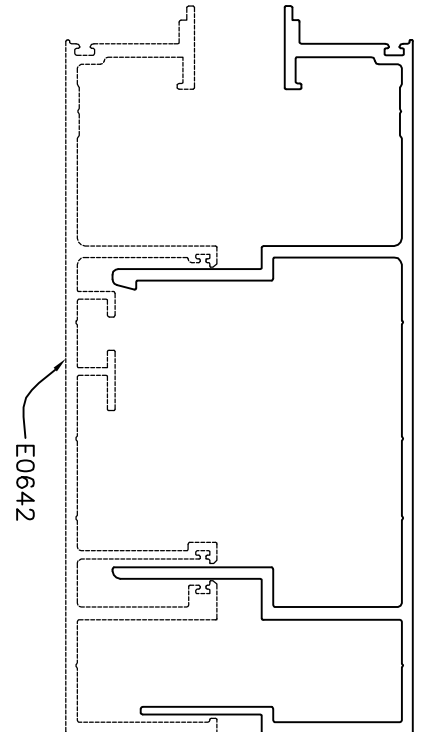


P-16728

E0643



DETAIL OF "A"
SCALE 3:1



TOLERANCES ON OVERALL WIDTHS & WIDTHS ACROSS FLATS OF BARS, & REGULAR SECTIONS

UPTO 6.40mm - ±0.20	UPTO 32.0mm - ±0.38	UPTO 120.0mm - ±0.85
UPTO 10.0mm - ±0.23	UPTO 50.0mm - ±0.46	UPTO 160.0mm - ±1.02
UPTO 12.0mm - ±0.25	UPTO 60.0mm - ±0.53	UPTO 200.0mm - ±1.14
UPTO 16.0mm - ±0.28	UPTO 80.0mm - ±0.69	UPTO 250.0mm - ±1.40
UPTO 25.0mm - ±0.30	UPTO 100.0mm - ±0.75	UPTO 300.0mm - ±1.65

Z = RADIUS 1.0 mm. (5 PLACES)
V = VEE GROOVE 0.4x90° (5 PLACES)

 <p>JINDAL ALUMINIUM LTD. BANGALORE-560073 (INDIA)</p>		<p>SYMBOL OF QUALITY AN ISO 9001 COMPANY</p>
<p>1. ALL DIMENSIONS ARE IN mm. 2. ROUND OFF ALL SHARP CORNERS WITH 0.40 mm. 3. TOLERANCES WILL BE AS PER IS:3965-1981, UNLESS OTHERWISE SPECIFIED</p>		
<p>PARTY'S NAME ALUFIT (INDIA) PRIVATE LIMITED, BANGALORE</p>		
<p>PARTY'S DRAWING No. AS PER AUTOCAD DRAWING-LR-01</p>		
<p>ALLOY & TEMPER 6063 T6</p>		
<p>DESCRIPTION CURTAIN WALL SECTION-MALE MULLION</p>		

<p>1. STRAIGHTNESS=1.0mm/M 2. TWIST=1.0mm/M 3. ANGULARITY= ±1° 4. FLATNESS =0.007xWIDTH</p>	<p>NAME J.P.KAUSHIK</p>	<p>DATE 20-01-2017</p>
<p>DRAWN CHECKED</p>	<p>APPROVED B.NATARAJA</p>	<p>SCALE 1:1</p>
<p>AREA PERIMETER</p>	<p>1449.2 963.449</p>	<p>WEIGHT kg/m 3.913</p>
<p>DRAWING No. P-16728 E0643</p>	<p>SECTION No. -</p>	<p>E0643</p>