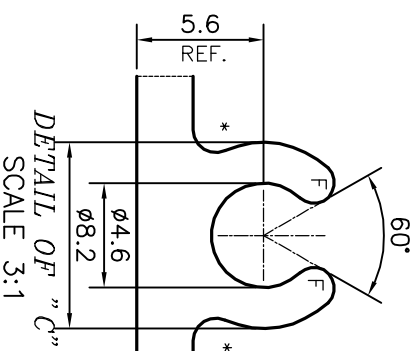
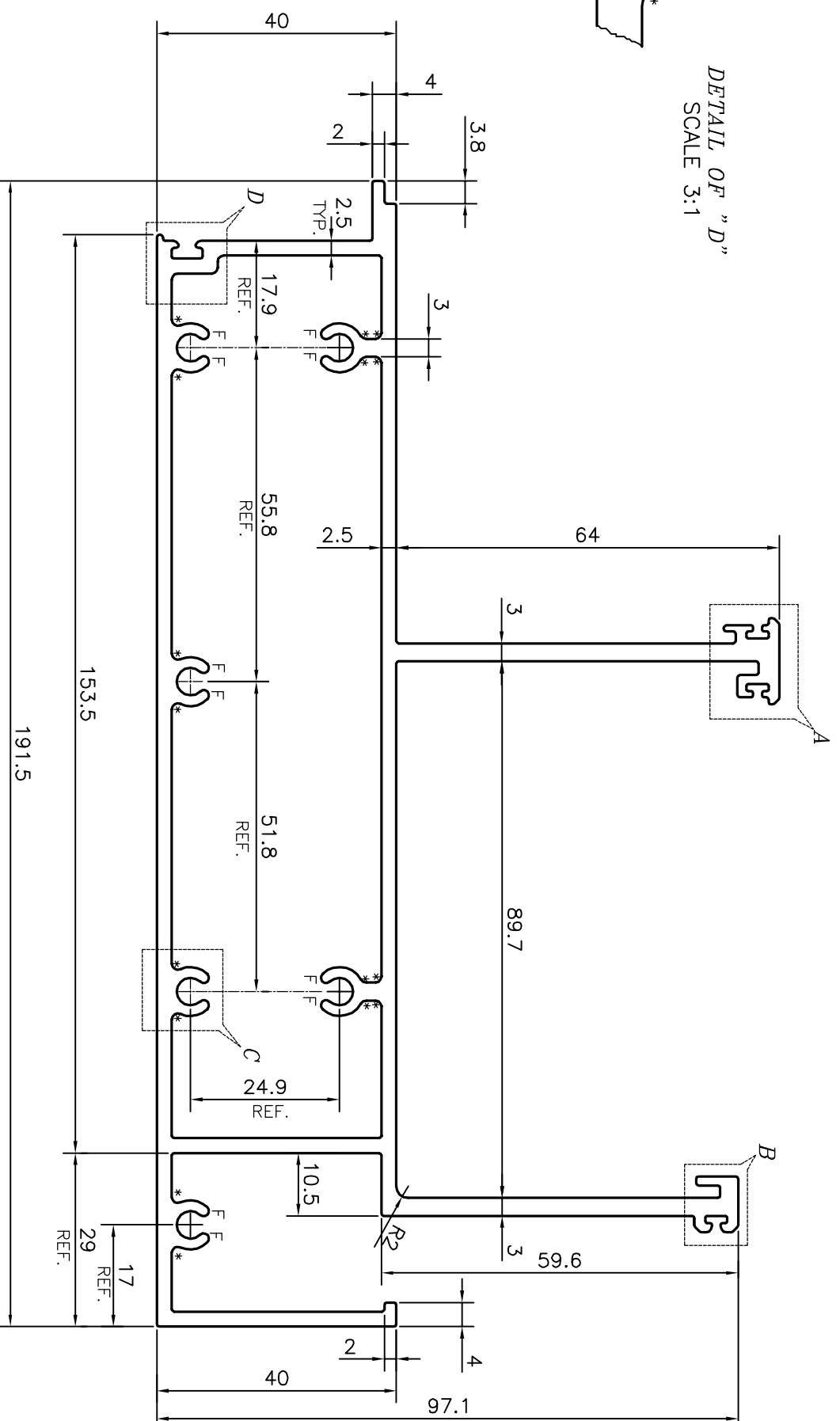


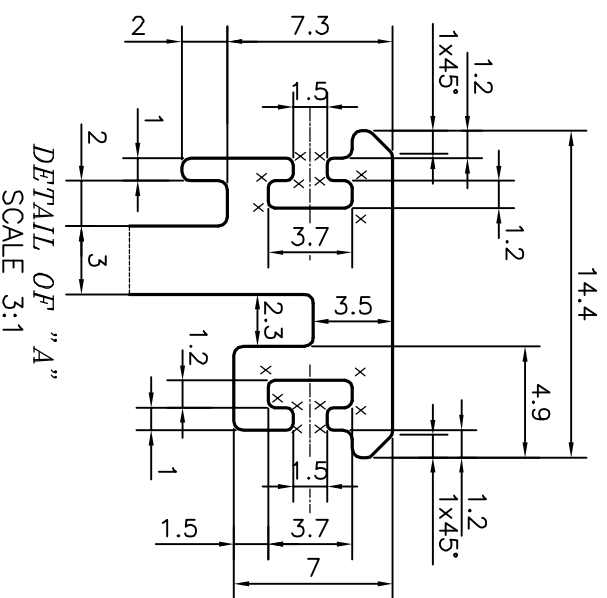
DETAIL OF "D"
SCALE 3:1



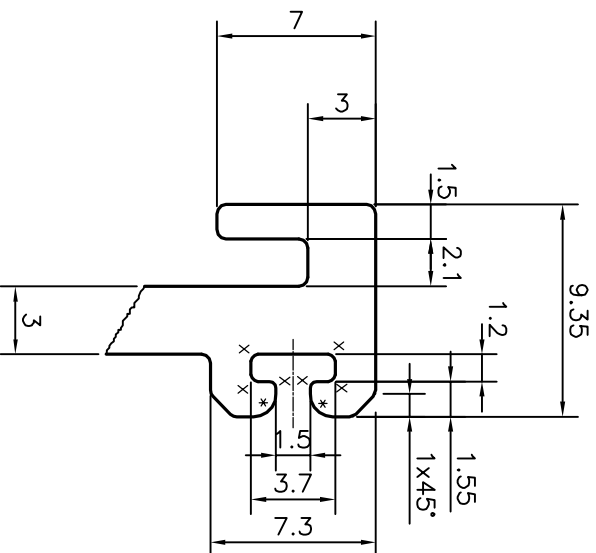
DETAIL OF "C"
SCALE 3:1



* = RADIUS 1 mm. (22 PLACES)
X = RADIUS 0.3 mm. (22 PLACES)
F = FULL RADIUS (12 PLACES)



DETAIL OF "A"
SCALE 3:1



DETAIL OF "B"
SCALE 3:1

TOLERANCES ON OVERALL WIDTHS & WIDTHS ACROSS FLATS OF BARS, & REGULAR SECTIONS

UPTO 6.40mm - ±0.20	UPTO 32.0mm - ±0.38	UPTO 120.0mm - ±0.85
UPTO 10.0mm - ±0.23	UPTO 50.0mm - ±0.46	UPTO 160.0mm - ±1.02
UPTO 12.0mm - ±0.25	UPTO 60.0mm - ±0.53	UPTO 200.0mm - ±1.14
UPTO 16.0mm - ±0.28	UPTO 80.0mm - ±0.69	UPTO 250.0mm - ±1.40
UPTO 25.0mm - ±0.30	UPTO 100.0mm - ±0.75	UPTO 300.0mm - ±1.65

<p>SYMBOL OF QUALITY AN ISO 9001 COMPANY</p>		<p>JINDAL ALUMINIUM LTD. BANGALORE-560073 (INDIA)</p>	
<p>1. ALL DIMENSIONS ARE IN mm. 2. ROUND OFF ALL SHARP CORNERS WITH 0.40 mm. 3. TOLERANCES WILL BE AS PER IS:6477-1983, UNLESS OTHERWISE SPECIFIED</p>		<p>1. STRAIGHTNESS=1.0mm/M 2. TWIST=1.0mm/M 3. ANGULARITY= ±1° 4. FLATNESS =0.007xWIDTH</p>	
DRAWN	J.P.KAUSHIK	DATE	22-03-2017
CHECKED			
APPROVED	B.NATARAJA		27-04-2017
SCALE	1:1		
AREA	mm ²		1805.497
PERIMETER	mm.		904.601
WEIGHT	kg/m		4.875
DRAWING No.	P-16733-1	SECTION No.	-
ALLOY & TEMPER	6063 T6		E0648
PARTY'S DRAWING No.	AS PER AUTOCAD DRAWING-LR-08		
PARTY'S NAME	ALUFIT (INDIA) PRIVATE LIMITED, BANGALORE		
DESCRIPTION	CURTAIN WALL SECTION-HEAD TRANSOM-2		