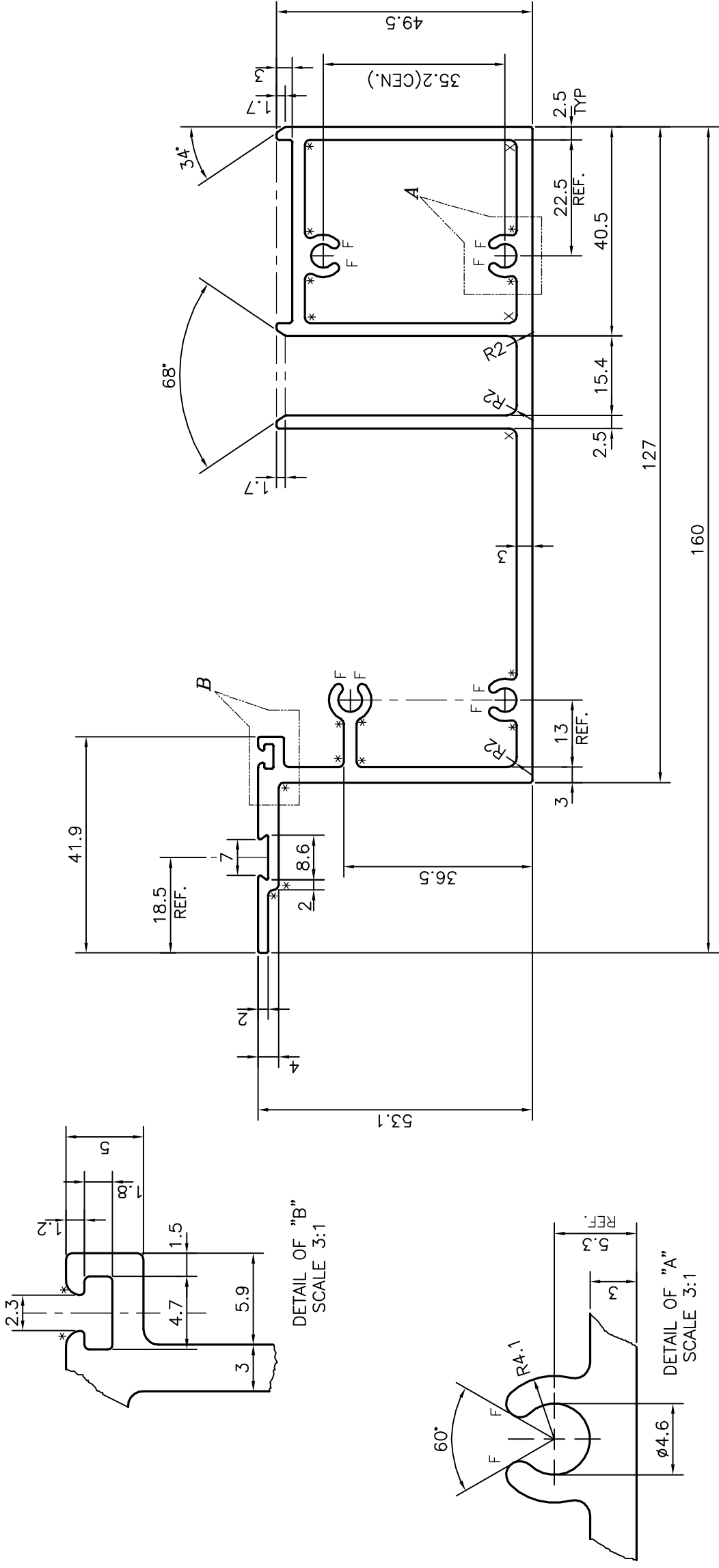


P-17251-1

E0690



F = FULL RADIUS (8 PLACES)  
 \* = RADIUS 1.0 (17 PLACES)  
 x = RADIUS 1.5 (3 PLACES)

TOLERANCES ON OVERALL DIMENSIONS OF HOLLOW SECTIONS

UPTO 20.0mm - ±0.30	UPTO 80.0mm - ±0.70	UPTO 180.0mm - ±1.27	1. STRAIGHTNESS=1.0mm/M
UPTO 30.0mm - ±0.38	UPTO 100.0mm - ±0.80	UPTO 200.0mm - ±1.40	2. TWIST=1.0mm/M
UPTO 40.0mm - ±0.45	UPTO 120.0mm - ±0.90	UPTO 225.0mm - ±1.52	3. ANGULARITY= ±1°
UPTO 50.0mm - ±0.52	UPTO 140.0mm - ±1.00		4. FLATNESS =0.007xWIDTH
UPTO 60.0mm - ±0.60	UPTO 160.0mm - ±1.14		



SYMBOL OF QUALITY  
 AN ISO 9001 COMPANY

**JINDAL ALUMINIUM LTD.**  
 BANGALORE-560073 (INDIA)

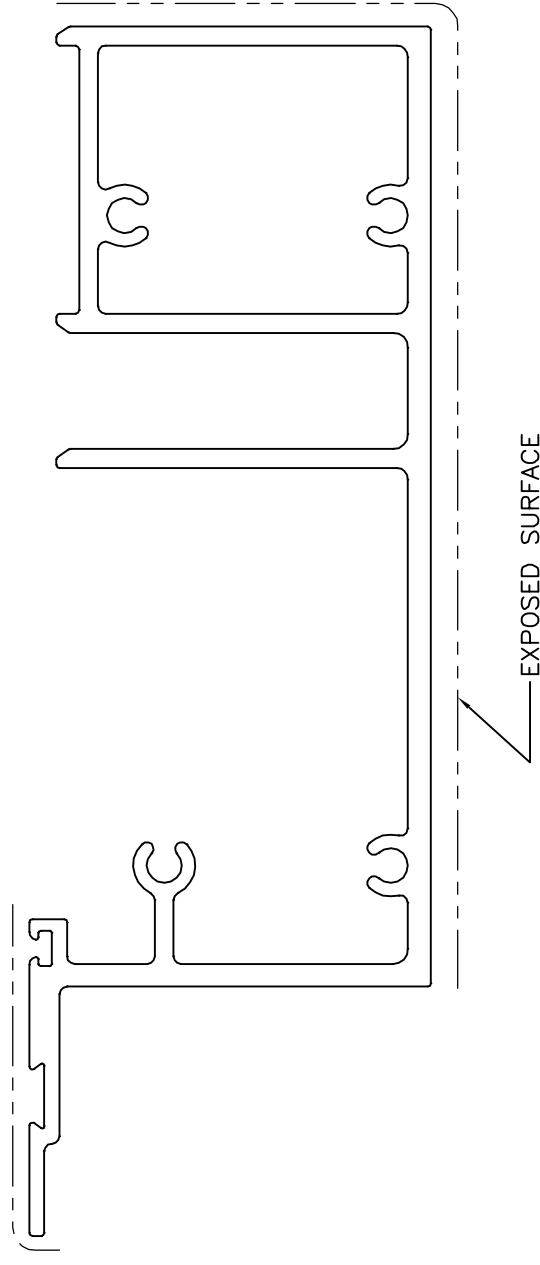
1. ALL DIMENSIONS ARE IN mm.  
 2. ROUND OFF ALL SHARP CORNERS WITH 0.40 mm.  
 3. TOLERANCES WILL BE AS PER IS:6477-1983 UNLESS OTHERWISE SPECIFIED

PARTY'S NAME ALUFIT (INDIA) PVT. LTD., BANGALORE

PARTY'S DRAWING No. AL-OR-04-A

ALLOY & TEMPER 6063 T6

DESCRIPTION CILL TRANSOM SECTION



DRAWN	J.P.KAUSHIK	14-06-2017
CHECKED		
APPROVED	B.NATARAJA	22-06-2017

SCALE	1:1
AREA	mm <sup>2</sup> 1206.051
PERIMETER	mm. 701.287
WEIGHT	kg/m 3.256
DRAWING No.	SECTION No.
P-17251-1	-
E0690	E0690