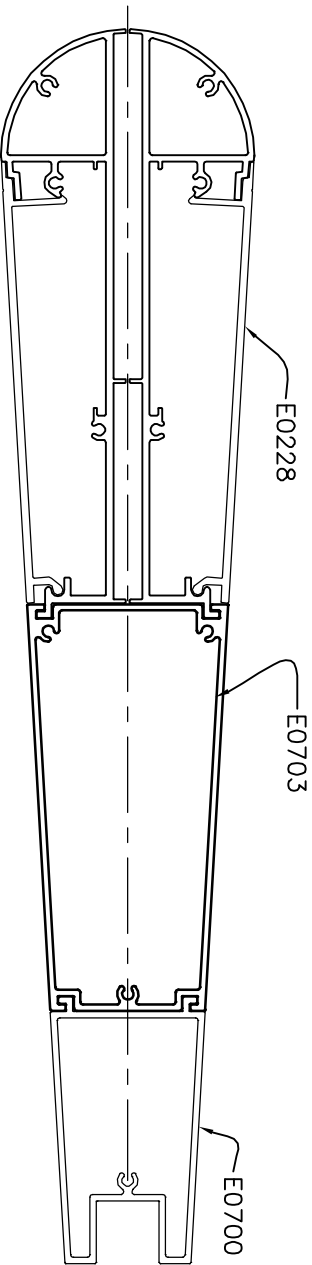
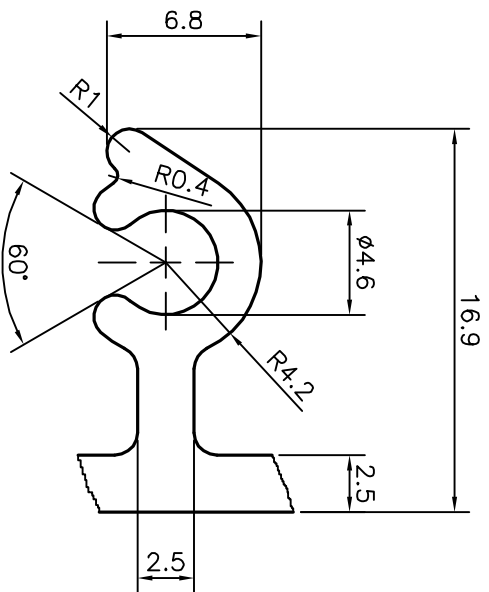
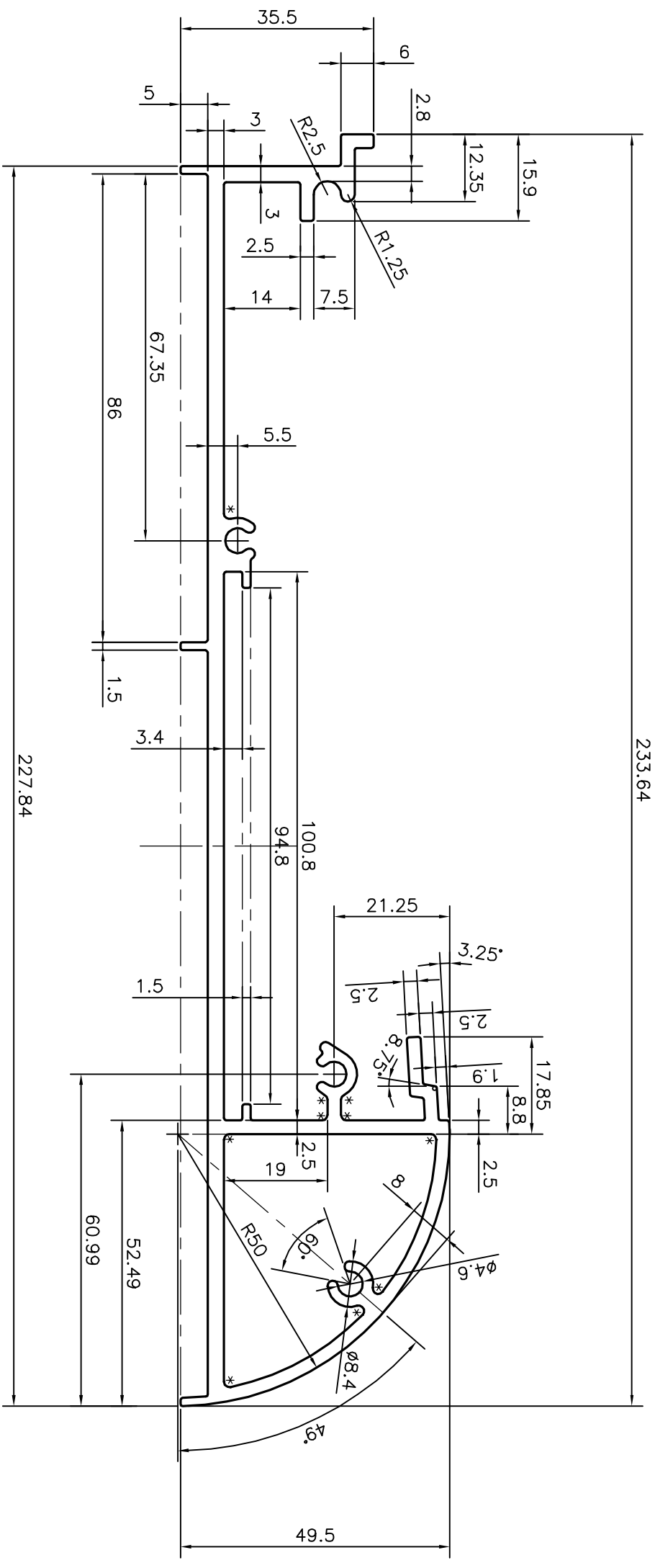


P-17186-1

E0704



TOLERANCES ON OVERALL WIDTHS & WIDTHS ACROSS FLATS OF BARS, & REGULAR SECTIONS

UPTO 6.40mm - ±0.20	UPTO 32.0mm - ±0.38	UPTO 120.0mm - ±0.85
UPTO 10.0mm - ±0.23	UPTO 50.0mm - ±0.46	UPTO 160.0mm - ±1.02
UPTO 12.0mm - ±0.25	UPTO 60.0mm - ±0.53	UPTO 200.0mm - ±1.14
UPTO 16.0mm - ±0.28	UPTO 80.0mm - ±0.69	UPTO 250.0mm - ±1.40
UPTO 25.0mm - ±0.30	UPTO 100.0mm - ±0.75	UPTO 300.0mm - ±1.65



JINDAL ALUMINIUM LTD.
BANGALORE-560073 (INDIA)

SYMBOL OF QUALITY
AN ISO 9001 COMPANY

1. ALL DIMENSIONS ARE IN mm.
2. ROUND OFF ALL SHARP CORNERS WITH 0.40 mm.
3. TOLERANCES WILL BE AS PER IS:6477-1983, UNLESS OTHERWISE SPECIFIED

PARTY'S NAME	ALUFIT (INDIA) PRIVATE LIMITED, BANGALORE	SCALE	1:1
PARTY'S DRAWING No.	AS PER AUTOCAD DRAWING-CR-28	AREA mm ²	1271.791
ALLOY & TEMPER	6063 T6	PERIMETER mm.	741.449
DESCRIPTION	FIN BRACKET-2	WEIGHT kg/m	3.434
		DRAWING No.	SECTION No.
		P-17186-1	-
		E0704	E0704

1. STRAIGHTNESS=1.0mm/M

2. TWIST=1.0mm/M

3. ANGULARITY= ±1°

4. FLATNESS =0.007xWIDTH

DRAWN NAME DATE

CHECKED J.P.KAUSHIK 05-06-2017

APPROVED B.MATARAJA 24-06-2017