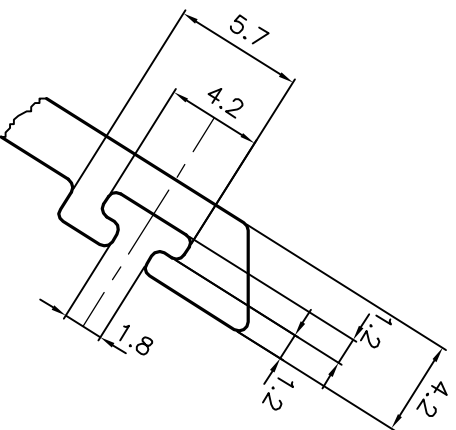
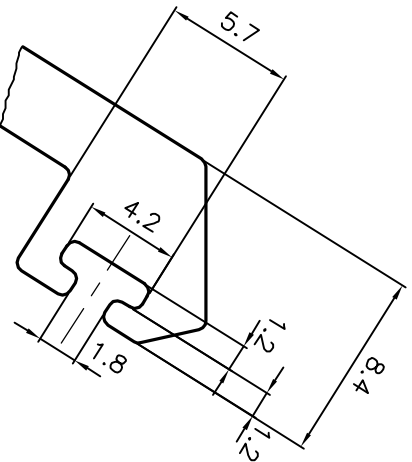


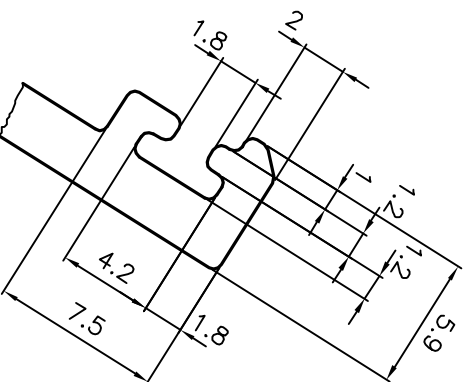
DETAIL OF "C"
SCALE 3:1



DETAIL OF "A"
SCALE 3:1



DETAIL OF "B"
SCALE 3:1



TOLERANCES ON OVERALL WIDTHS & WIDTHS ACROSS FLATS OF BARS, & REGULAR SECTIONS

UPTO 6.40mm - ±0.20	UPTO 32.0mm - ±0.38	UPTO 120.0mm - ±0.85
UPTO 10.0mm - ±0.23	UPTO 50.0mm - ±0.46	UPTO 160.0mm - ±1.02
UPTO 12.0mm - ±0.25	UPTO 60.0mm - ±0.53	UPTO 200.0mm - ±1.14
UPTO 16.0mm - ±0.28	UPTO 80.0mm - ±0.69	UPTO 250.0mm - ±1.40
UPTO 25.0mm - ±0.30	UPTO 100.0mm - ±0.75	UPTO 300.0mm - ±1.65

<p>SYMBOL OF QUALITY AN ISO 9001 COMPANY</p>	<p>JINDAL ALUMINIUM LTD.</p> <p>BANGALORE-560073 (INDIA)</p>	
	<p>1. ALL DIMENSIONS ARE IN mm.</p> <p>2. ROUND OFF ALL SHARP CORNERS WITH 0.40 mm.</p> <p>3. TOLERANCES WILL BE AS PER IS:3965-1981, UNLESS OTHERWISE SPECIFIED</p>	<p>1. STRAIGHTNESS=1.0mm/M</p> <p>2. TWIST=1.0mm/M</p> <p>3. ANGULARITY= ±1°</p> <p>4. FLATNESS =0.007xWIDTH</p>

PARTY'S NAME	ALUFIT (INDIA) PRIVATE LIMITED, BANGALORE
PARTY'S DRAWING No.	PROFILE-AL-38
ALLOY & TEMPER	6063 T6
DESCRIPTION	EXTERNAL CORNER FEMALE MULLION
DRAWN	J.P.KAUSHIK
DATE	20-06-2017
CHECKED	
APPROVED	B.MATYARAJA
SCALE	1:1
AREA	1102.964
PERIMETER	741.041
WEIGHT kg/m	2.978
DRAWING No.	P-17280-1
SECTION No.	-
	E0734
	E0734