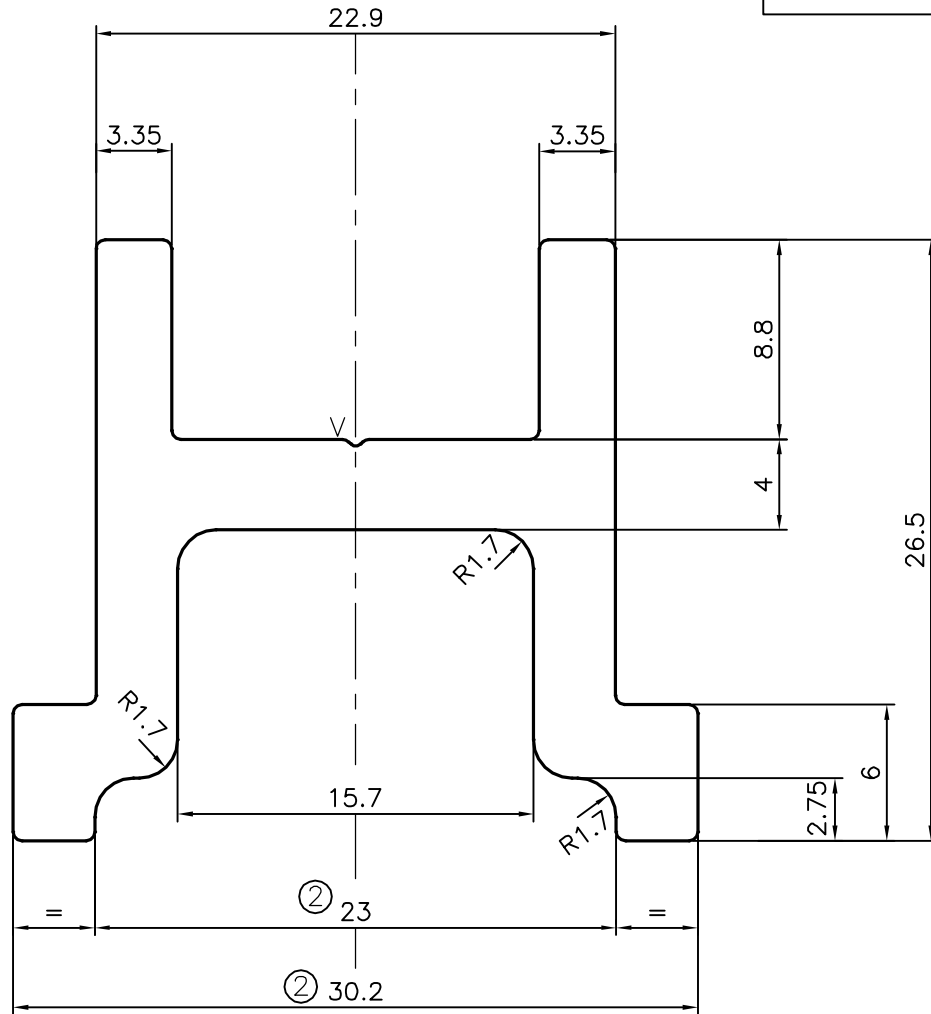
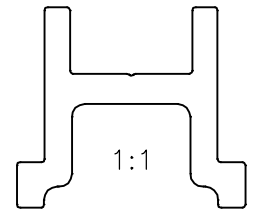


P-17562-1

E0757



ISSUE-2


DIMENSION CHANGED FROM 33 mm TO 30.20 mm & FROM 25 mm TO 23 mm

WEIGHT ALSO CHANGED FROM 0.770 TO 0.739 kg/m

V = V GROOVE 0.3x90°(ONE PLACE)

TOLERANCES ON OVERALL WIDTHS & WIDTHS ACROSS FLATS OF BARS, & REGULAR SECTIONS

UPTO 6.40mm - ±0.20	UPTO 32.0mm - ±0.38	UPTO 120.0mm - ±0.85	1. STRAIGHTNESS=1.0mm/M 2. TWIST=1.0mm/M 3. ANGULARITY= ±1° 4. FLATNESS =0.007xWIDTH
UPTO 10.0mm - ±0.23	UPTO 50.0mm - ±0.46	UPTO 160.0mm - ±1.02	
UPTO 12.0mm - ±0.25	UPTO 60.0mm - ±0.53	UPTO 200.0mm - ±1.14	
UPTO 16.0mm - ±0.28	UPTO 80.0mm - ±0.69	UPTO 250.0mm - ±1.40	
UPTO 25.0mm - ±0.30	UPTO 100.0mm - ±0.75	UPTO 300.0mm - ±1.65	

 SYMBOL OF QUALITY AN ISO 9001 COMPANY	JINDAL ALUMINIUM LTD. BANGALORE-560073 (INDIA)	NAME	DATE
		DRAWN	J.P.KAUSHIK
		CHECKED	
		APPROVED	B.NATARAJA
			16-11-2017
1. ALL DIMENSIONS ARE IN mm. 2. ROUND OFF ALL SHARP CORNERS WITH 0.40 mm. 3. TOLERANCES WILL BE AS PER IS:3965-1981 , UNLESS OTHERWISE SPECIFIED		SCALE	3:1
		AREA mm ²	273.792
		PERIMETER mm.	151.807
		WEIGHT kg/m	0.739
		DRAWING No.	SECTION No.
		P-17562-1	-
		E0757	E0757(ISSUE-2)
PARTY'S NAME	ALUFIT (INDIA) PRIVATE LIMITED, BANGALORE		
PARTY'S DRAWING No.	AS PER AUTOCAD DRAWING-ES-06		
ALLOY & TEMPER	6063 T6		
DESCRIPTION	BOTTOM PROFILE		