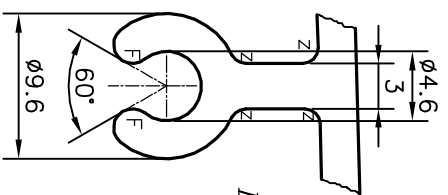
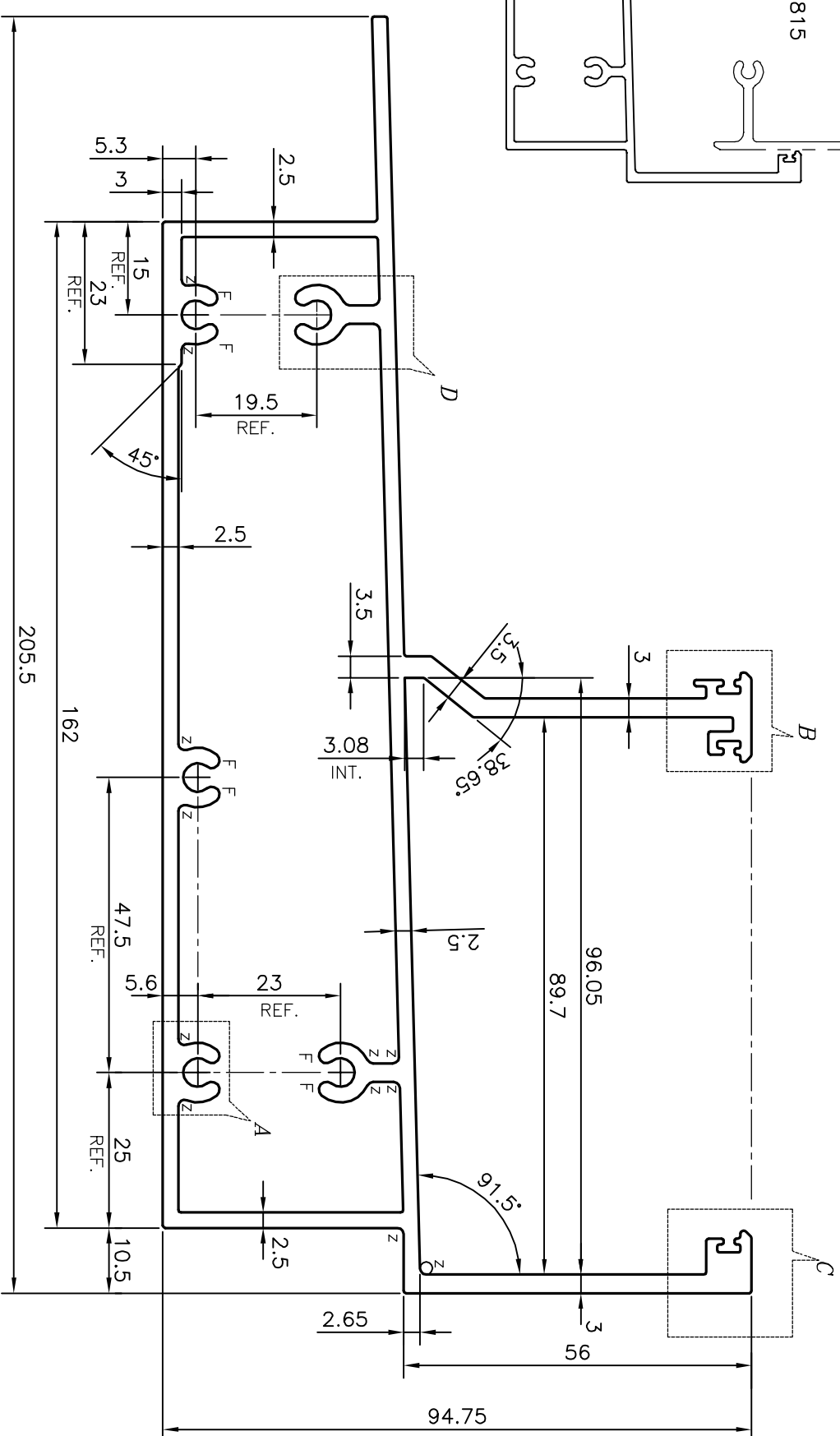
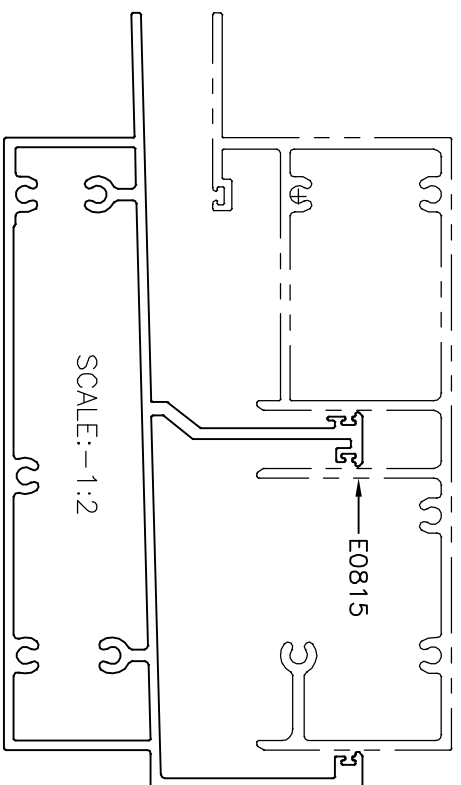
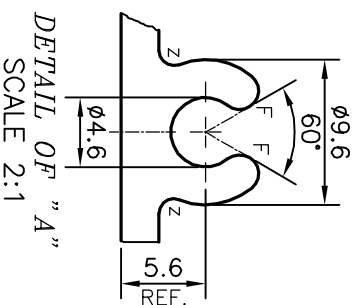


P-17977

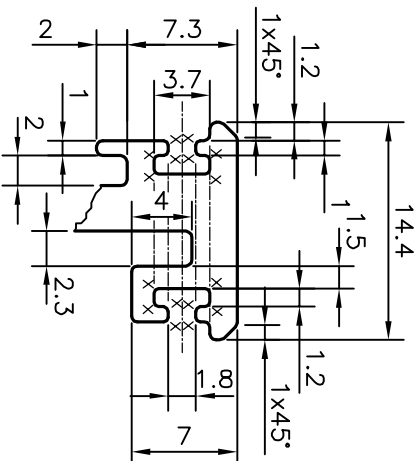
E0814



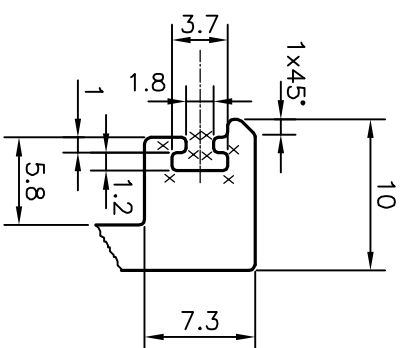
DETAIL OF "D"
SCALE 2:1



DETAIL OF "A"
SCALE 2:1



DETAIL OF "B"
SCALE 2:1



DETAIL OF "C"
SCALE 2:1

F = FULL RADIUS (10 PLACES)
Z = RADIUS 1 mm. (16 PLACES)
X = RADIUS 0.3 mm. (24 PLACES)

TOLERANCES ON OVERALL WIDTHS & WIDTHS ACROSS FLATS OF BARS, & REGULAR SECTIONS

UPTO 6.40mm - ±0.20	UPTO 32.0mm - ±0.38	UPTO 120.0mm - ±0.85
UPTO 10.0mm - ±0.23	UPTO 50.0mm - ±0.46	UPTO 160.0mm - ±1.02
UPTO 12.0mm - ±0.25	UPTO 60.0mm - ±0.53	UPTO 200.0mm - ±1.14
UPTO 16.0mm - ±0.28	UPTO 80.0mm - ±0.69	UPTO 250.0mm - ±1.40
UPTO 25.0mm - ±0.30	UPTO 100.0mm - ±0.75	UPTO 300.0mm - ±1.65

1. STRAIGHTNESS=1.0mm/M
2. TWIST=1.0mm/M
3. FLATNESS =0.007xWIDTH

JINDAL
SYMBOL OF QUALITY
AN ISO 9001 COMPANY

JINDAL ALUMINIUM LTD.
BANGALORE-560073 (INDIA)

1. ALL DIMENSIONS ARE IN mm.
2. ROUND OFF ALL SHARP CORNERS WITH 0.40 mm.
3. TOLERANCES WILL BE AS PER IS:6477-1983, UNLESS OTHERWISE SPECIFIED

PARTY'S NAME	ALUFIT (INDIA) PRIVATE LIMITED, BANGALORE
PARTY'S DRAWING No.	AL-SV-04
ALLOY & TEMPER	6063 T6
DESCRIPTION	CURTAIN WALL SECTION-HEAD TRANSOM

DRAWN	J.P. KAUSHIK	DATE	12-03-2018
CHECKED			
APPROVED	B. NATARAJA		29-03-2018
SCALE	1:1		
AREA	mm ²		1755.831
PERIMETER	mm.		775.492
WEIGHT	kg/m		4.741
DRAWING No.	P-17977	SECTION No.	-
	E0814		E0814