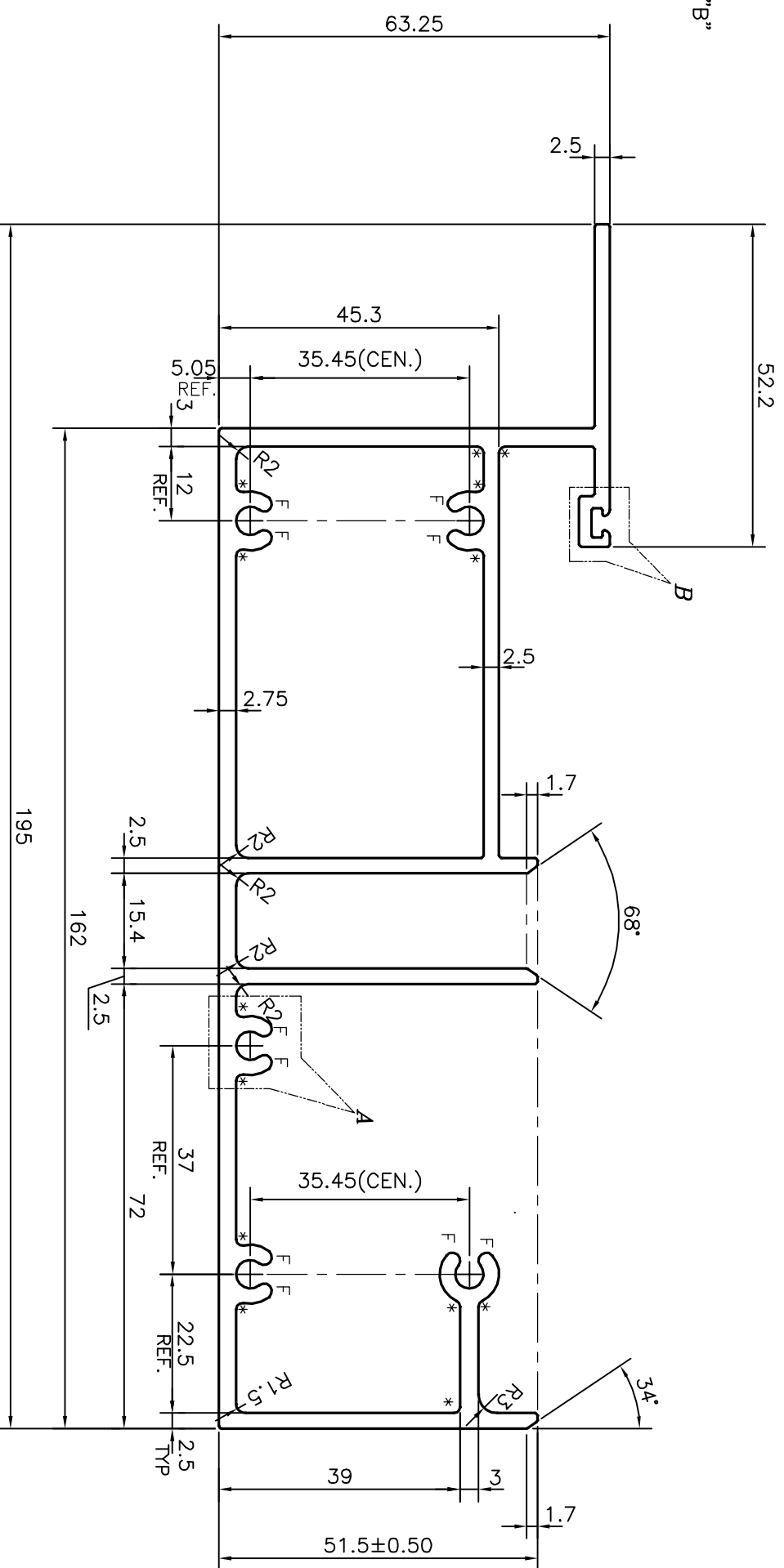
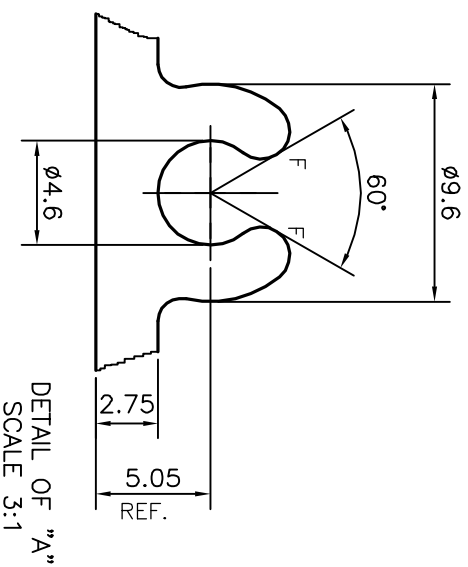
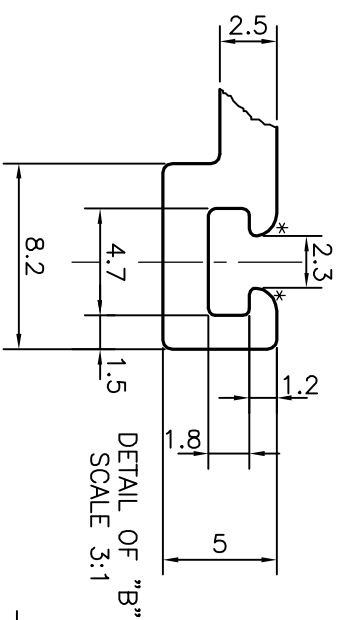


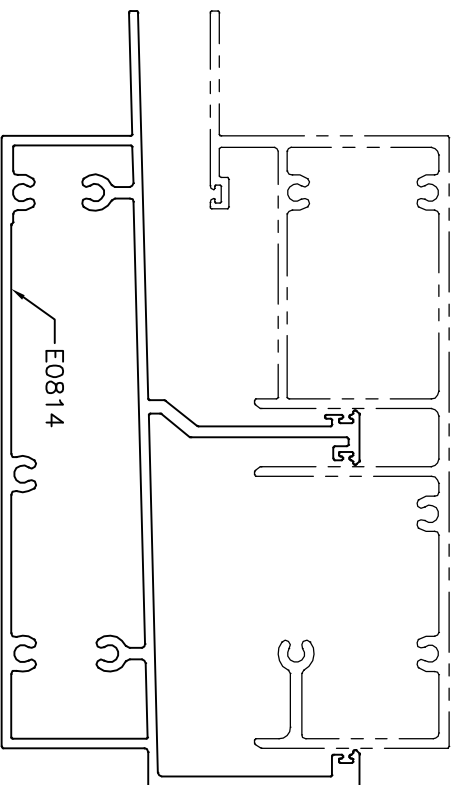
P-17979

E0815



1. STRAIGHTNESS=1.0mm/M
2. TWIST=1.0mm/M
3. ANGULARITY= ±1°
4. FLATNESS =0.007XWIDTH

F = FULL RADIUS (8 PLACES)
 * = RADIUS 1.0 (15 PLACES)



TOLERANCES ON OVERALL WIDTHS & WIDTHS ACROSS FLATS OF BARS, & REGULAR SECTIONS		UPTO 320.00mm - ±1.70	
UPTO 6.40mm - ±0.20	UPTO 32.0mm - ±0.38	UPTO 120.0mm - ±0.85	
UPTO 10.0mm - ±0.23	UPTO 50.0mm - ±0.46	UPTO 160.0mm - ±1.02	
UPTO 12.0mm - ±0.25	UPTO 60.0mm - ±0.53	UPTO 200.0mm - ±1.14	
UPTO 16.0mm - ±0.28	UPTO 80.0mm - ±0.69	UPTO 250.0mm - ±1.40	
UPTO 25.0mm - ±0.30	UPTO 100.0mm - ±0.75	UPTO 300.0mm - ±1.65	

JINDAL
 SYMBOL OF QUALITY
 AN ISO 9001 COMPANY
JINDAL ALUMINIUM LTD.
 BANGALORE-560073 (INDIA)

1. ALL DIMENSIONS ARE IN mm.
2. ROUND OFF ALL SHARP CORNERS WITH 0.40 mm.
3. TOLERANCES WILL BE AS PER IS:6477-1983 UNLESS OTHERWISE SPECIFIED

PARTY'S NAME	ALUFIT (INDIA) PVT. LTD., BANGALORE	SCALE	1:1
PARTY'S DRAWING No.	AL-SV-05	AREA mm ²	1517.197
ALLOY & TEMPER	6063 T6	PERIMETER mm.	868.225
DESCRIPTION	CILL TRANSOM SECTION	WEIGHT kg/m	4.096
		DRAWING No.	SECTION No.
		P-17979	-
		E0815	E0815

DRAWN	J.P.KAUSHIK	DATE	12-03-2018
CHECKED			
APPROVED	B.NATARAJA		29-03-2018