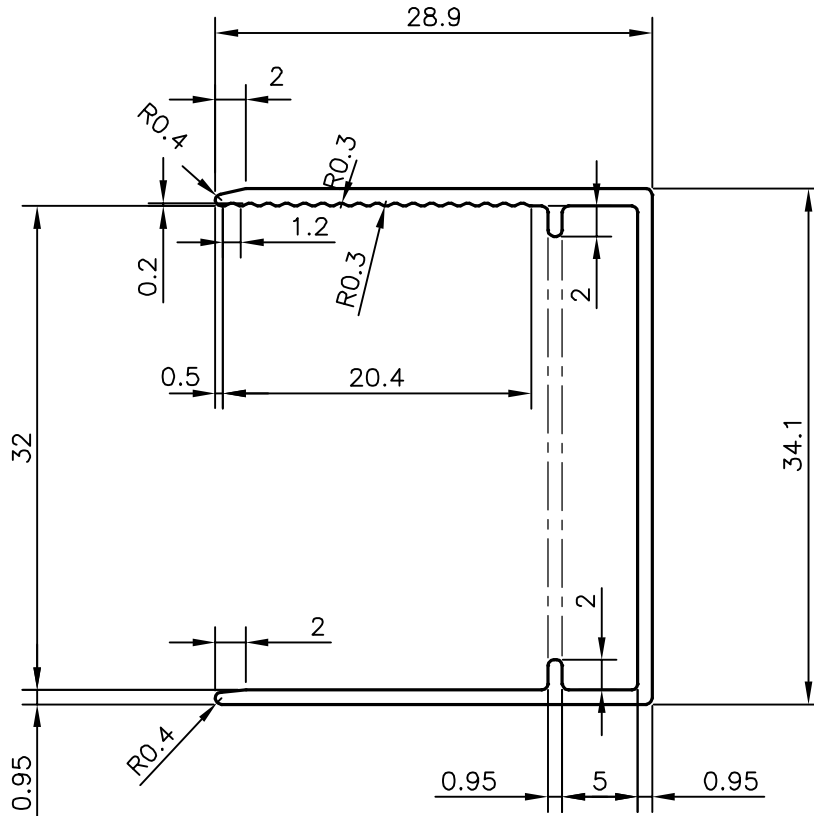
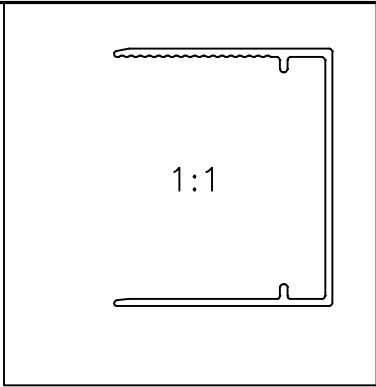



P-17878
X2301
E0842



TOLERANCE CHART CD = CIRCUMSCRIBING CIRCLE

| CD ≤ 100 | 100 < CD ≤ 200 | 200 < CD < 300 | 300 < CD < 500 |
|----------------------|----------------|----------------|----------------|
| UPTO 10mm - ±0.25 | ±0.30 | ±0.35 | ±0.40 |
| 10.0 - 25.0 - ±0.30 | ±0.40 | ±0.50 | ±0.60 |
| 25.0 - 50.0 - ±0.50 | ±0.60 | ±0.80 | ±0.90 |
| 50.0 - 100.0 - ±0.70 | ±0.90 | ±1.10 | ±1.30 |
| 100 - 150 - - | ±1.10 | ±1.30 | ±1.50 |
| 150 - 200 - - | ±1.3 | ±1.50 | ±1.80 |
| 200 - 300 - - | - | ±1.70 | ±2.10 |
| 300 - 450 - - | - | - | ±2.80 |

| | | | |
|---|--|----------------------|-------------|
|  SYMBOL OF QUALITY AN ISO 9001 COMPANY | JINDAL ALUMINIUM LTD. BANGALORE-560073 (INDIA) | NAME | DATE |
| | | DRAWN | J.P.KAUSHIK |
| 1. ALL DIMENSIONS ARE IN mm. 2. ROUND OFF ALL SHARP CORNERS WITH 0.40 mm. 3. TOLERANCES WILL BE AS PER BS:EN-755-9 UNLESS OTHERWISE SPECIFIED | | CHECKED | |
| | | APPROVED | B.NATARAJ |
| PARTY'S NAME CLEAR AMBER GROUP, UK | | SCALE | 2:1 |
| | | AREA mm ² | 92.121 |
| PARTY'S DRAWING No. AS PER DRAWING | | PERIMETER mm. | 187.951 |
| | | WEIGHT kg/m | 0.249 |
| ALLOY & TEMPER 6063 T6 | | DRAWING No. | SECTION No. |
| | | P-17878 | - |
| DESCRIPTION 32mm C-SECTION | | X2301 | X2301 |
| | | E0842 | E0842 |