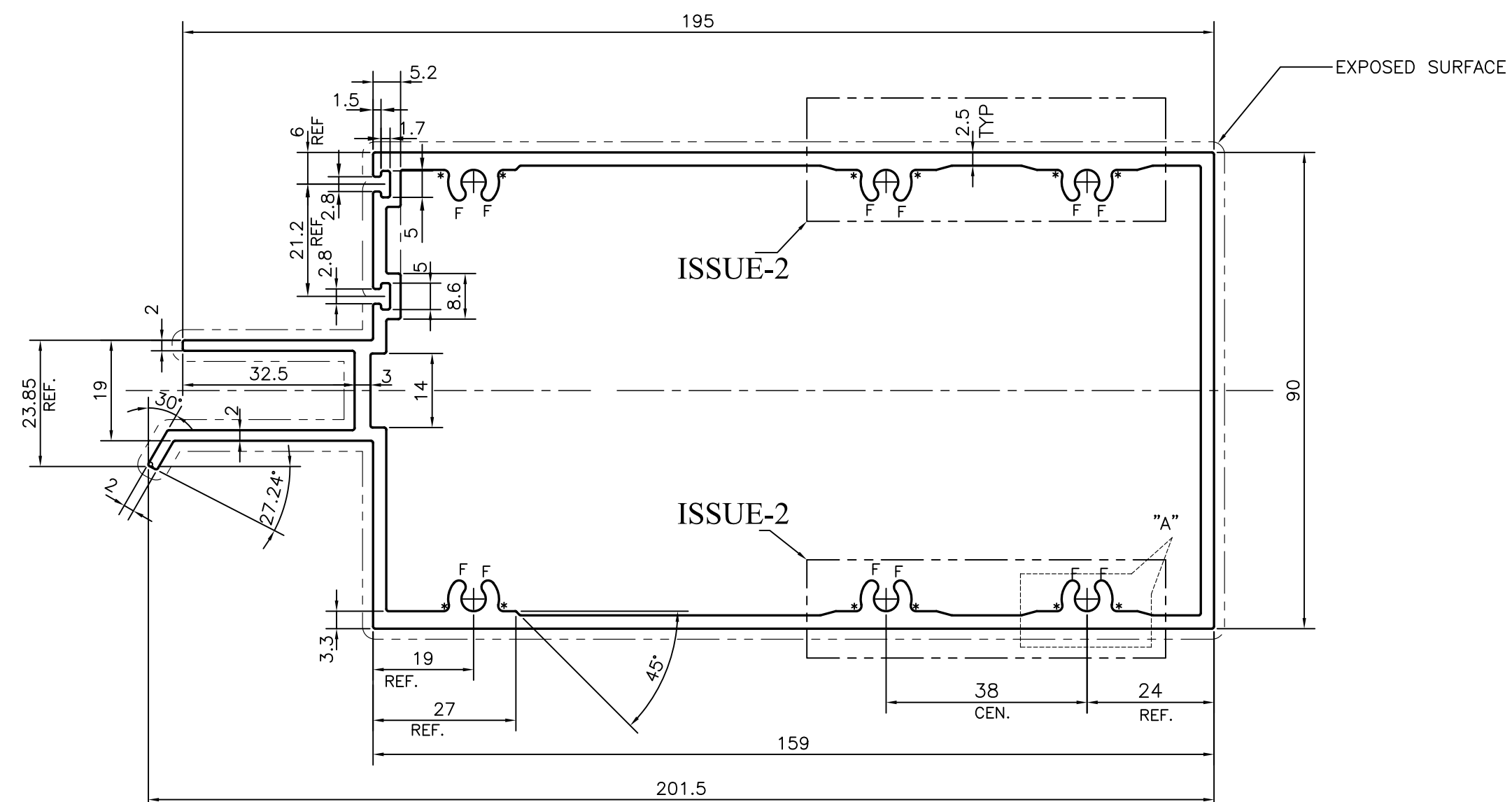
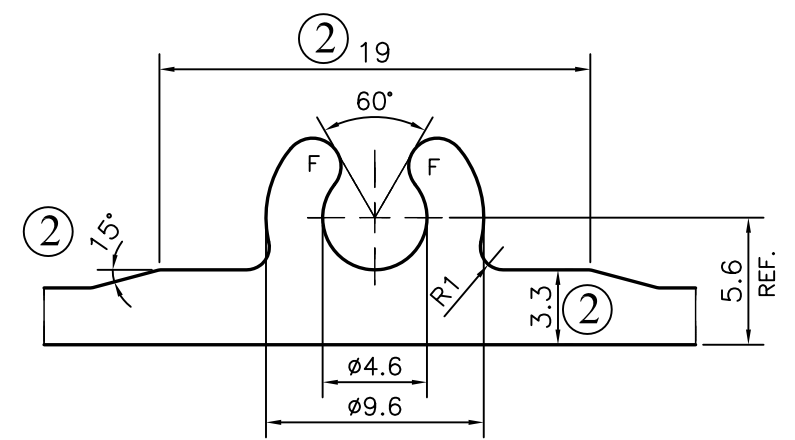


P-18389-1
E0869



F = FULL RADIUS (12 PLACES)
* = RADIUS 1.0 (12 PLACES)



ISSUE-2 (4 PLACES)

TOLERANCES ON OVERALL WIDTHS & WIDTHS ACROSS FLATS OF BARS, & REGULAR SECTIONS				
UPTO 6.40mm - ±0.20	UPTO 32.0mm - ±0.38	UPTO 120.0mm - ±0.85	1. STRAIGHTNESS=1.0mm/M 2. TWIST=1.0mm/M 3. ANGULARITY= ±1° 4. FLATNESS =0.007xWIDTH	
UPTO 10.0mm - ±0.23	UPTO 50.0mm - ±0.46	UPTO 160.0mm - ±1.02		
UPTO 12.0mm - ±0.25	UPTO 60.0mm - ±0.53	UPTO 200.0mm - ±1.14		
UPTO 16.0mm - ±0.28	UPTO 80.0mm - ±0.69	UPTO 250.0mm - ±1.40		
UPTO 25.0mm - ±0.30	UPTO 100.0mm - ±0.75	UPTO 300.0mm - ±1.65		
 SYMBOL OF QUALITY AN ISO 9001 COMPANY	JINDAL ALUMINIUM LTD. BANGALORE-560073 (INDIA)		NAME	DATE
			DRAWN	J.P.KAUSHIK
1. ALL DIMENSIONS ARE IN mm. 2. ROUND OFF ALL SHARP CORNERS WITH 0.40 mm. 3. TOLERANCES WILL BE AS PER IS:6477-1983 UNLESS OTHERWISE SPECIFIED			CHECKED	
			APPROVED	B.NATARAJA
PARTY'S NAME ALUFIT (INDIA) PVT. LTD., BANGALORE			SCALE	1:1
			AREA mm ²	1705.145
PARTY'S DRAWING No. WTC-DIE-08			PERIMETER mm.	670.251
			WEIGHT kg/m	4.604
ALLOY & TEMPER 6063 T6			DRAWING No.	SECTION No.
			P-18389-1	-
DESCRIPTION OPENABLE TRANSOM SECTION			E0869	E0869-ISSUE-2