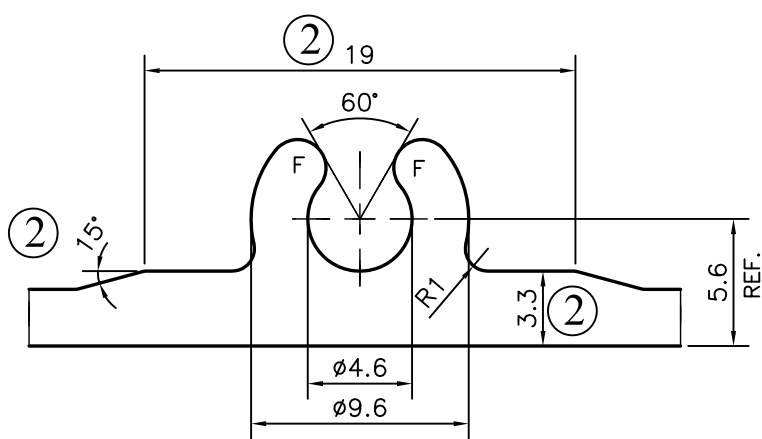
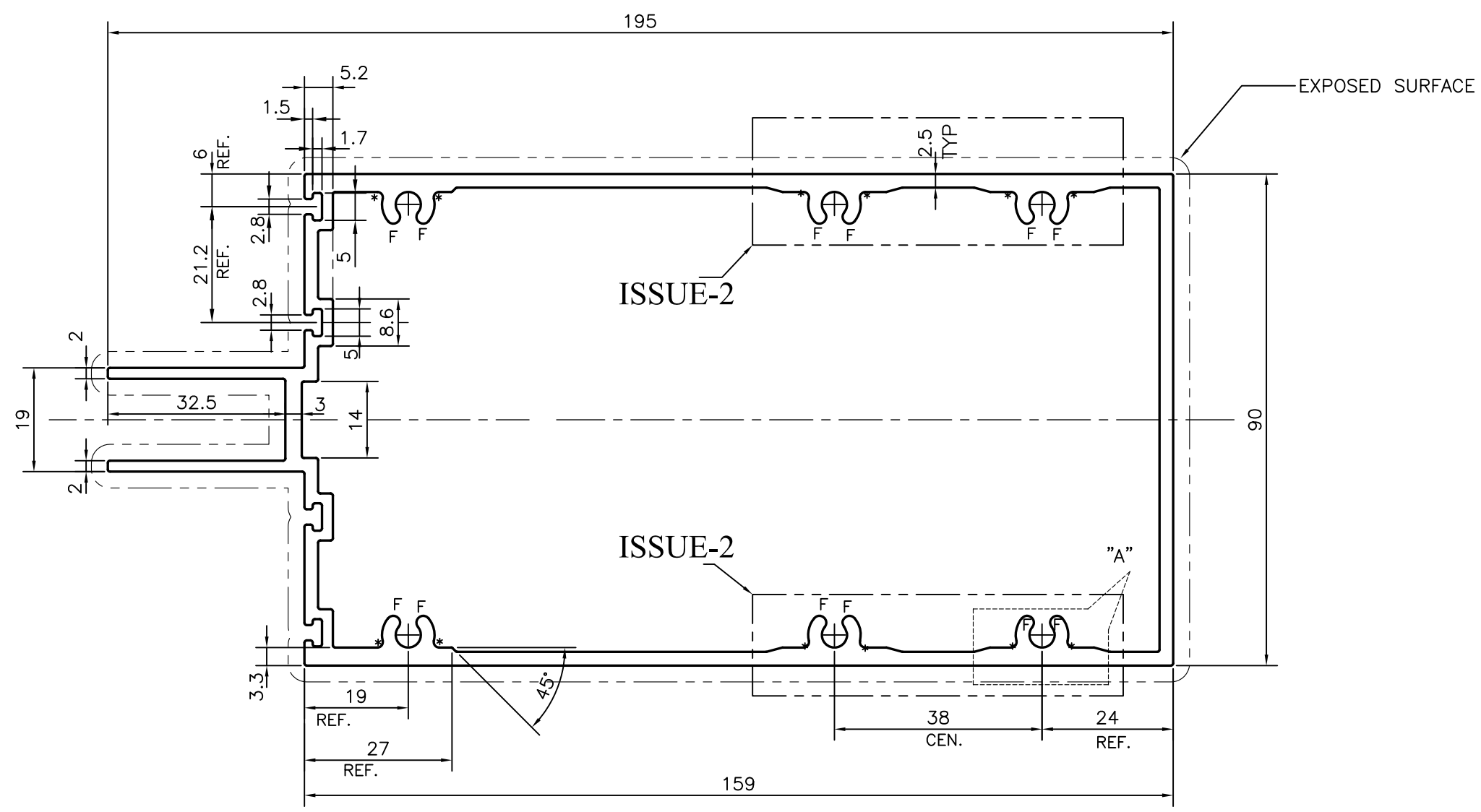


P-18390-1
E0870



DETAIL OF "A"
SCALE 3:1

ISSUE-2 (4 PLACES)

F = FULL RADIUS (12 PLACES)
* = RADIUS 1.0 (12 PLACES)

TOLERANCES ON OVERALL WIDTHS & WIDTHS ACROSS FLATS OF BARS, & REGULAR SECTIONS			
UPTO 6.40mm - ±0.20	UPTO 32.0mm - ±0.38	UPTO 120.0mm - ±0.85	1. STRAIGHTNESS=1.0mm/M 2. TWIST=1.0mm/M 3. ANGULARITY= ±1° 4. FLATNESS =0.007xWIDTH
UPTO 10.0mm - ±0.23	UPTO 50.0mm - ±0.46	UPTO 160.0mm - ±1.02	
UPTO 12.0mm - ±0.25	UPTO 60.0mm - ±0.53	UPTO 200.0mm - ±1.14	
UPTO 16.0mm - ±0.28	UPTO 80.0mm - ±0.69	UPTO 250.0mm - ±1.40	
UPTO 25.0mm - ±0.30	UPTO 100.0mm - ±0.75	UPTO 300.0mm - ±1.65	

JINDAL		JINDAL ALUMINIUM LTD.		NAME	DATE
SYMBOL OF QUALITY AN ISO 9001 COMPANY		BANGALORE-560073 (INDIA)		DRAWN	J.P.KAUSHIK 18-08-2018
1. ALL DIMENSIONS ARE IN mm. 2. ROUND OFF ALL SHARP CORNERS WITH 0.40 mm. 3. TOLERANCES WILL BE AS PER IS:6477-1983 UNLESS OTHERWISE SPECIFIED		ALUFIT (INDIA) PVT. LTD., BANGALORE		CHECKED	
		PARTY'S DRAWING No. WTC-DIE-07		APPROVED	B.NATARAJA 20-08-2018
		ALLOY & TEMPER 6063 T6		SCALE	1:1
		DESCRIPTION MID TRANSOM SECTION		AREA mm ²	1703.322
		PERIMETER mm.	670.646		
		WEIGHT kg/m	4.599		
		DRAWING No.	P-18390-1	SECTION No.	-
			E0870		E0870-ISSUE-2