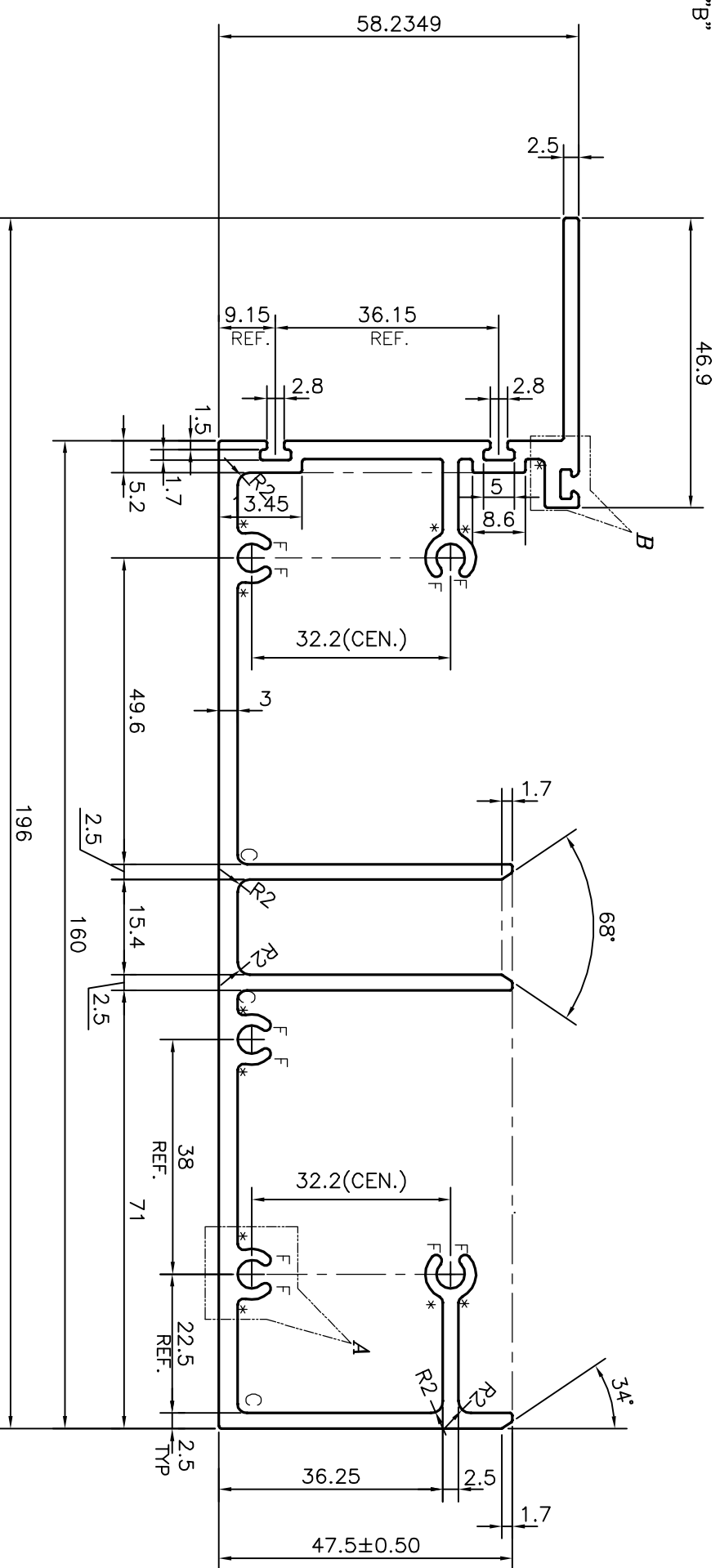
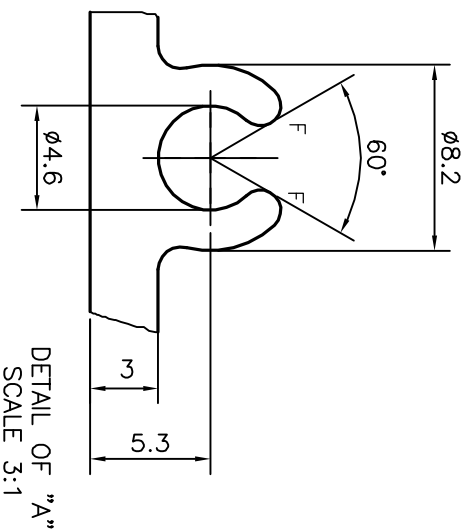
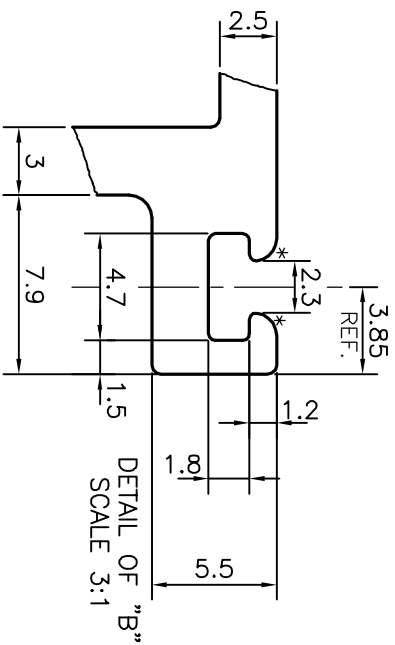


P-18394-1

E0873



1. STRAIGHTNESS=1.0mm/M
2. TWIST=1.0mm/M
3. ANGULARITY= ±1°
4. FLATNESS =0.007XWIDTH

- F = FULL RADIUS (10 PLACES)
 * = RADIUS 1.0 (11 PLACES)
 C = RADIUS 1.5 (3 PLACES)

TOLERANCES ON OVERALL WIDTHS & WIDTHS ACROSS FLATS OF BARS, & REGULAR SECTIONS

UPTO 6.40mm - ±0.20	UPTO 32.0mm - ±0.38	UPTO 120.0mm - ±0.85	UPTO 320.00mm - ±1.70
UPTO 10.0mm - ±0.23	UPTO 50.0mm - ±0.46	UPTO 160.0mm - ±1.02	
UPTO 12.0mm - ±0.25	UPTO 60.0mm - ±0.53	UPTO 200.0mm - ±1.14	
UPTO 16.0mm - ±0.28	UPTO 80.0mm - ±0.69	UPTO 250.0mm - ±1.40	
UPTO 25.0mm - ±0.30	UPTO 100.0mm - ±0.75	UPTO 300.0mm - ±1.65	

<p>SYMBOL OF QUALITY AN ISO 9001 COMPANY</p>	<p>JINDAL ALUMINIUM LTD. BANGALORE-560073 (INDIA)</p>	
	DRAWN	NAME
	J.P.KAUSHIK	DATE
CHECKED		11-07-2018
APPROVED	B.MATARAJA	14-07-2018
SCALE	1:1	
AREA	mm ²	1321.291
PERIMETER	mm.	988.709
WEIGHT	kg/m	3.567
DRAWING No.		SECTION No.
P-18394-1		-
E0873		E0873

1. ALL DIMENSIONS ARE IN mm.
2. ROUND OFF ALL SHARP CORNERS WITH 0.40 mm.
3. TOLERANCES WILL BE AS PER IS:3965-1981 UNLESS OTHERWISE SPECIFIED

PARTY'S NAME	ALUFIT (INDIA) PVT. LTD., BANGALORE
PARTY'S DRAWING No.	WTC-DIE-06
ALLOY & TEMPER	6063 T6
DESCRIPTION	CILL TRANSOM SECTION

