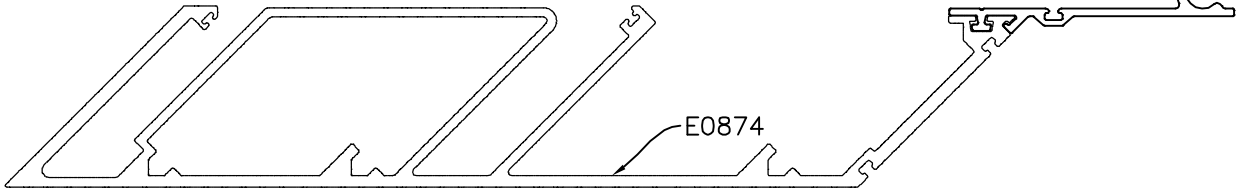
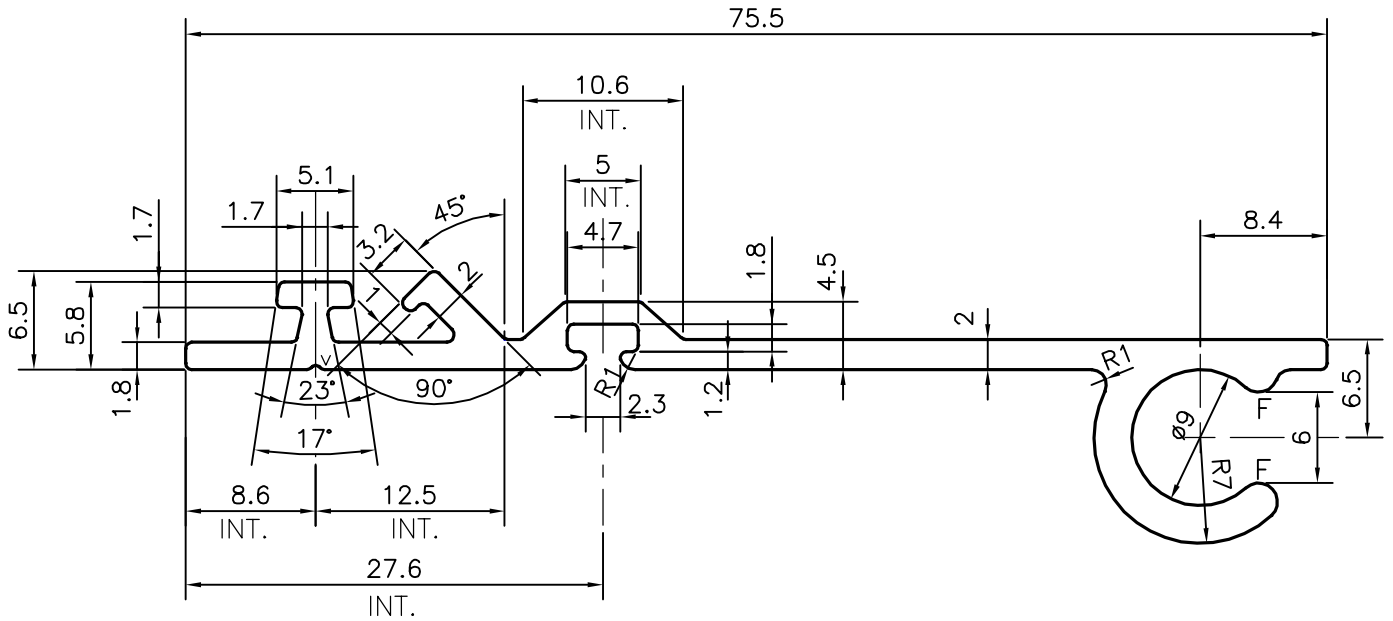
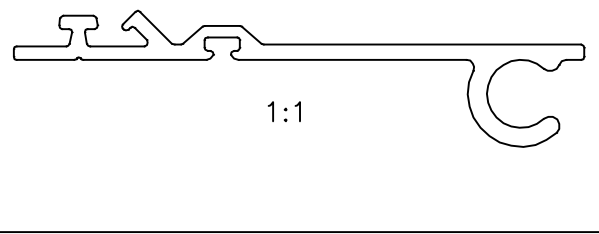


P-18401

E0875




1. STRAIGHTNESS=1.0mm/M
2. TWIST=1.0mm/M
3. ANGULARITY= ±1°
4. FLATNESS =0.007xWIDTH

F = FULL RADIUS (2 PLACES)  
 V = V GROOVE 0.3x90°

TOLERANCES ON OVERALL WIDTHS & WIDTHS ACROSS FLATS OF BARS, & REGULAR SECTIONS

UPTO 6.40mm - ±0.20	UPTO 32.0mm - ±0.38	UPTO 120.0mm - ±0.85	UPTO 320.00mm - ±1.70
UPTO 10.0mm - ±0.23	UPTO 50.0mm - ±0.46	UPTO 160.0mm - ±1.02	
UPTO 12.0mm - ±0.25	UPTO 60.0mm - ±0.53	UPTO 200.0mm - ±1.14	
UPTO 16.0mm - ±0.28	UPTO 80.0mm - ±0.69	UPTO 250.0mm - ±1.40	
UPTO 25.0mm - ±0.30	UPTO 100.0mm - ±0.75	UPTO 300.0mm - ±1.65	

 SYMBOL OF QUALITY AN ISO 9001 COMPANY	<b>JINDAL ALUMINIUM LTD.</b> BANGALORE-560073 (INDIA)	DRAWN	J.P.KAUSHIK	DATE	07-07-2018
		CHECKED			
		APPROVED	<b>B.NATARAJA</b>		14-07-2018
1. ALL DIMENSIONS ARE IN mm. 2. ROUND OFF ALL SHARP CORNERS WITH 0.40 mm. 3. TOLERANCES WILL BE AS PER IS:3965-1981 UNLESS OTHERWISE SPECIFIED		SCALE		2:1	
		AREA mm <sup>2</sup>		234.259	
		PERIMETER mm.		225.645	
		WEIGHT kg/m		0.633	
		DRAWING No.		SECTION No.	
PARTY'S NAME	ALUFIT (INDIA) PVT. LTD., BANGALORE	P-18401	-		
PARTY'S DRAWING No.	WTC-DIE-15	E0875	E0875		
ALLOY & TEMPER	6063 T6				
DESCRIPTION	CORNER LIGHT ARRESTER EDGE GUARD-32MM GLASS				