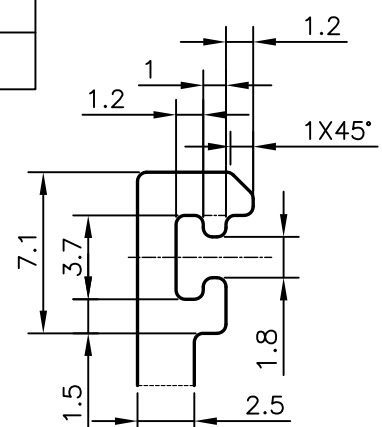
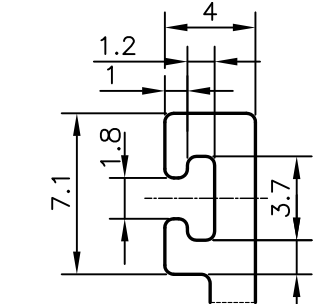


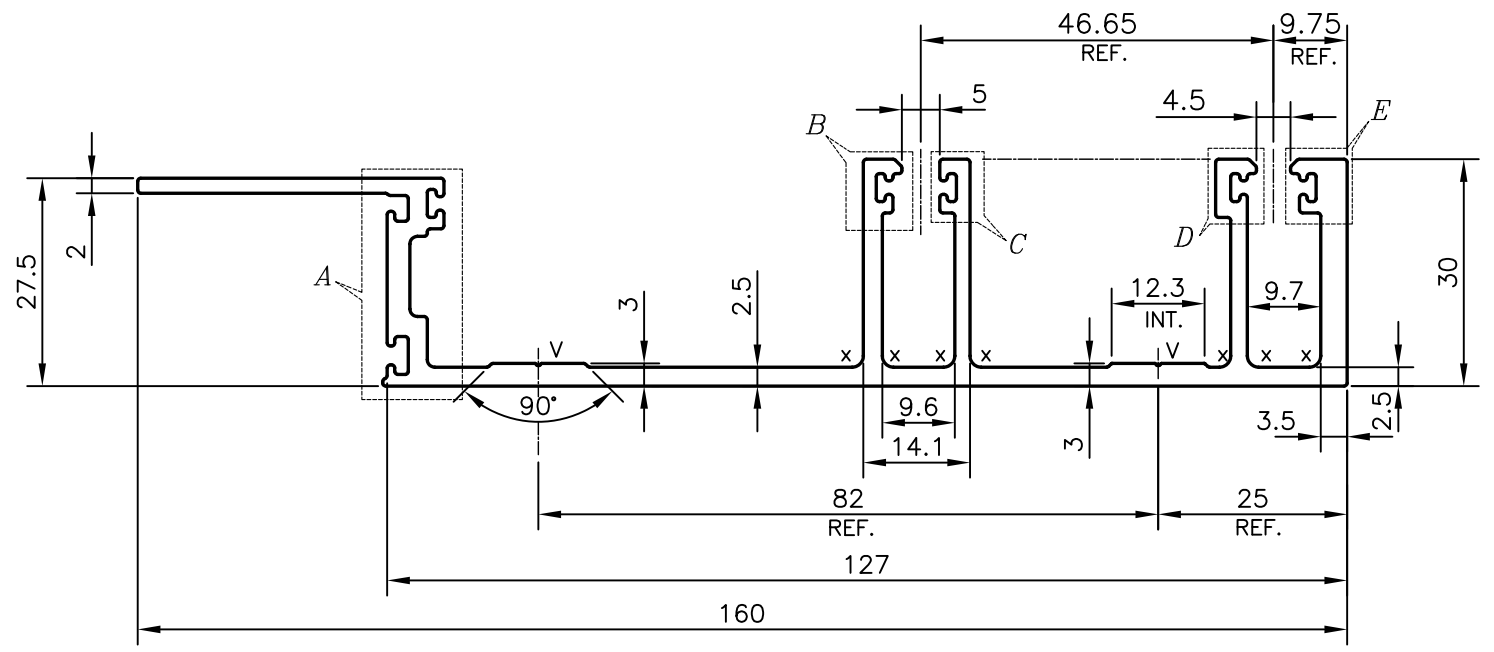
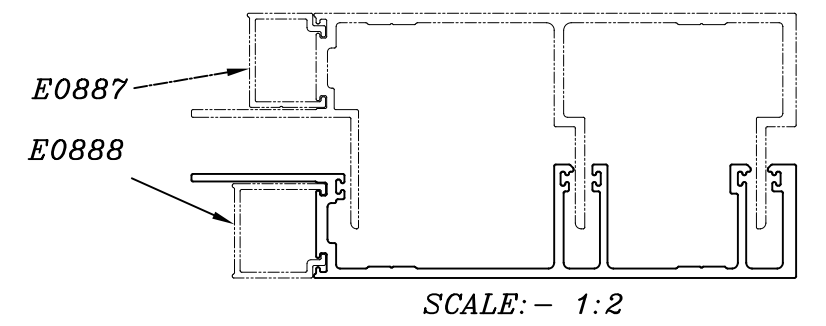
P-18409-1
E0884



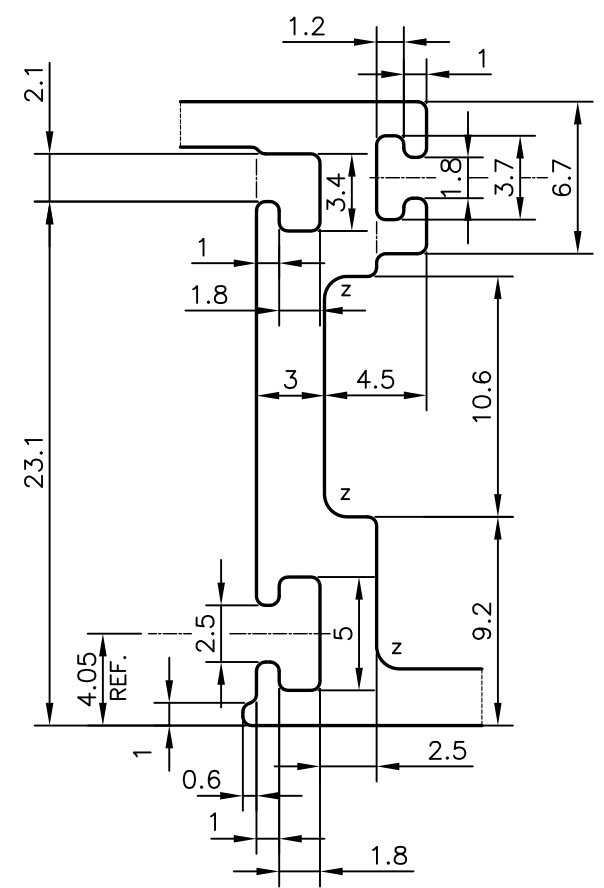
DETAIL OF "B"
SCALE 3:1



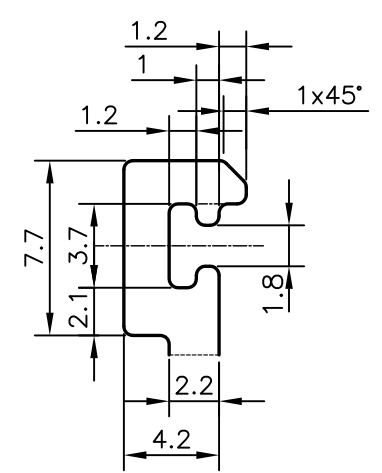
DETAIL OF "C"
SCALE 3:1



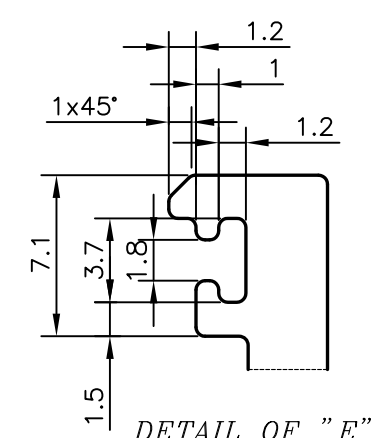
X = RADIUS 1.5 mm. (7 LACES)
Z = RADIUS 1 mm. (3 LACES)
V = VEE GROOVE 0.3x90° (2 LACES)



DETAIL OF "A"
SCALE 3:1



DETAIL OF "D"
SCALE 3:1



DETAIL OF "E"
SCALE 3:1

TOLERANCES ON OVERALL WIDTHS & WIDTHS ACROSS FLATS OF BARS, & REGULAR SECTIONS			
UPTO 6.40mm - ±0.20	UPTO 32.0mm - ±0.38	UPTO 120.0mm - ±0.85	1. STRAIGHTNESS=1.0mm/M 2. TWIST=1.0mm/M 3. ANGULARITY= ±1° 4. FLATNESS =0.007xWIDTH
UPTO 10.0mm - ±0.23	UPTO 50.0mm - ±0.46	UPTO 160.0mm - ±1.02	
UPTO 12.0mm - ±0.25	UPTO 60.0mm - ±0.53	UPTO 200.0mm - ±1.14	
UPTO 16.0mm - ±0.28	UPTO 80.0mm - ±0.69	UPTO 250.0mm - ±1.40	
UPTO 25.0mm - ±0.30	UPTO 100.0mm - ±0.75	UPTO 300.0mm - ±1.65	

 SYMBOL OF QUALITY AN ISO 9001 COMPANY	JINDAL ALUMINIUM LTD. BANGALORE-560073 (INDIA)	NAME	DATE
		DRAWN	PARVESH 13-07-2018
		CHECKED	
		APPROVED	B.NATARAJA 17-07-2018
		SCALE	1:1
		AREA mm ²	817.377
		PERIMETER mm.	667.681
		WEIGHT kg/m	2.207
PARTY'S NAME	ALUFIT INDIA PVT. LTD., BANGALORE	DRAWING No.	SECTION No.
PARTY'S DRAWING No.	AS PER AUTOCAD DRAWING-AL-OR2-02	P-18409-1	-
ALLOY & TEMPER	6063 T6	E0884	E0884
DESCRIPTION	CURTAIN WALL SECTION-FEMALE MULLION		

1. ALL DIMENSIONS ARE IN mm.
2. ROUND OFF ALL SHARP CORNERS WITH 0.40 mm.
3. TOLERANCES WILL BE AS PER IS:3965-1981, UNLESS OTHERWISE SPECIFIED