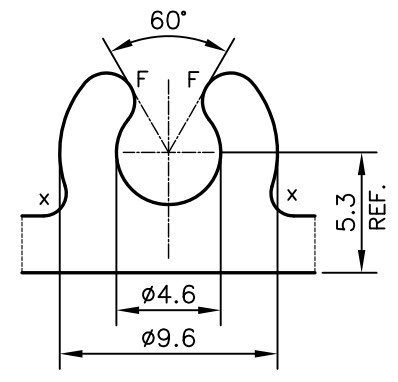
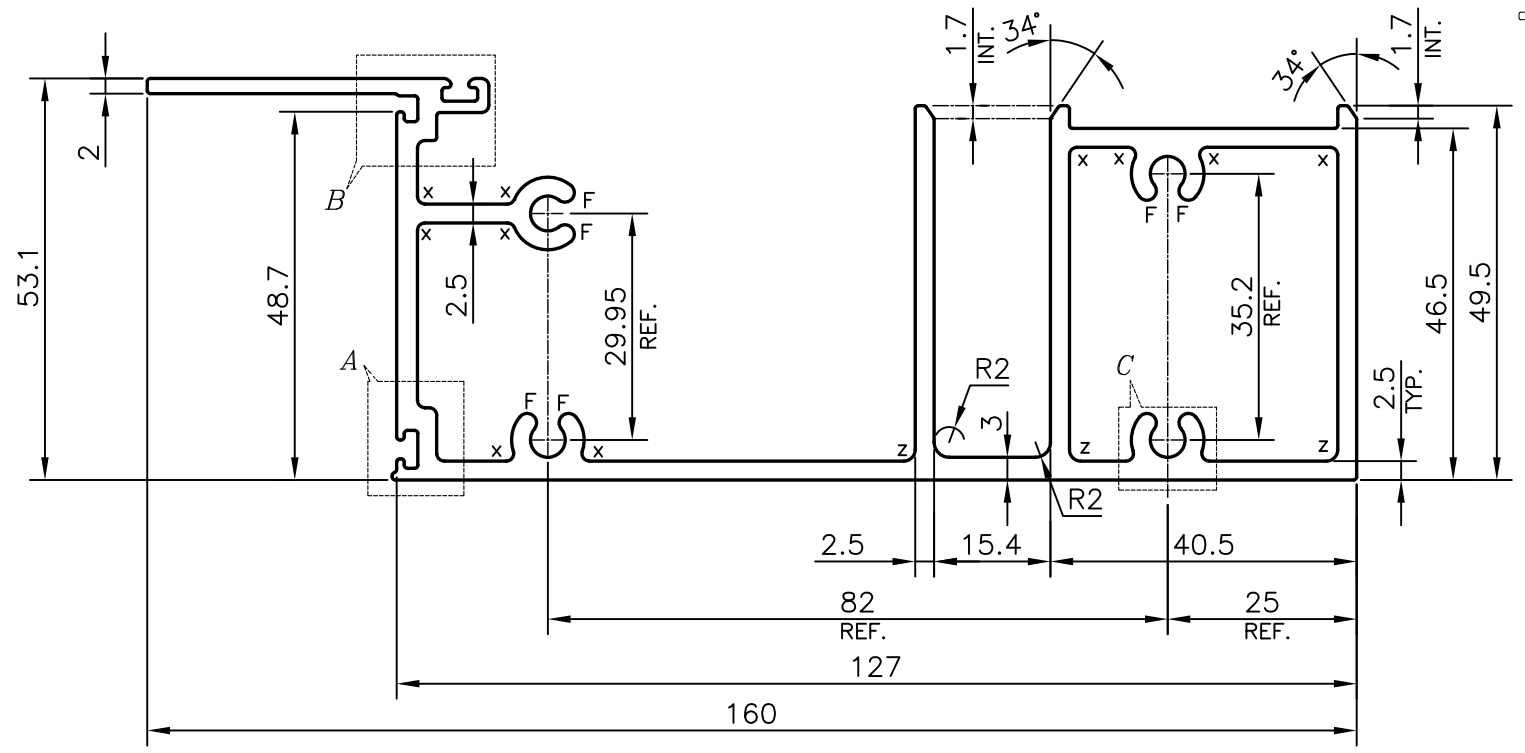
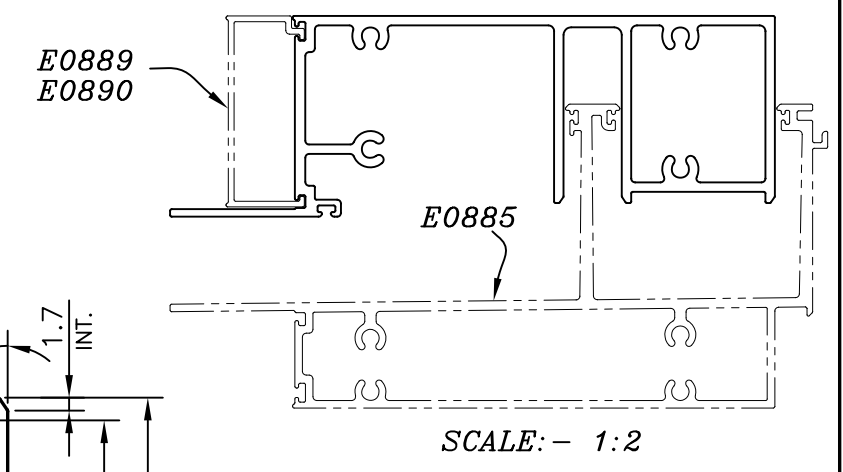
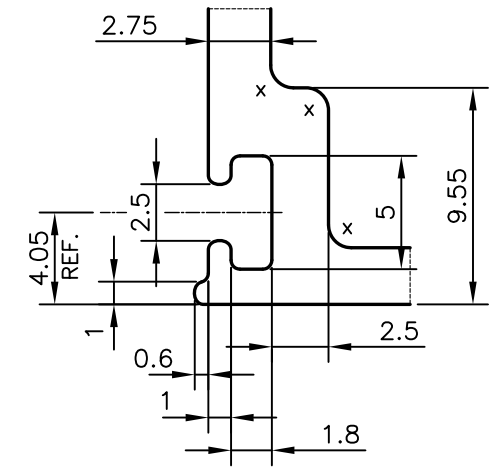


P-18411
E0886

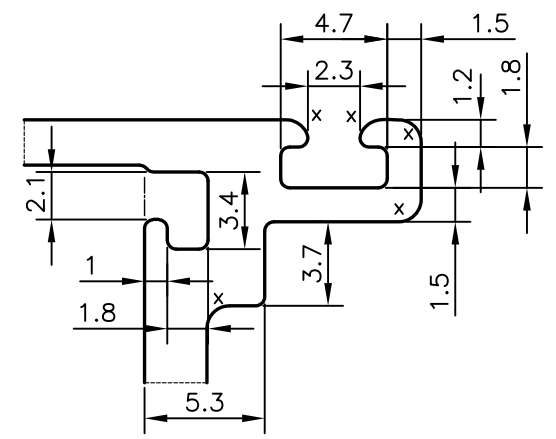


DETAIL OF "C"
SCALE 3:1

X = RADIUS 1 mm. (21 PLACES)
Z = RADIUS 1.5 mm. (3 PLACES)
F = FULL RADIUS (8 PLACES)



DETAIL OF "A"
SCALE 3:1



DETAIL OF "B"
SCALE 3:1

TOLERANCES ON OVERALL WIDTHS & WIDTHS ACROSS FLATS OF BARS, & REGULAR SECTIONS

UPTO 6.40mm - ±0.20	UPTO 32.0mm - ±0.38	UPTO 120.0mm - ±0.85
UPTO 10.0mm - ±0.23	UPTO 50.0mm - ±0.46	UPTO 160.0mm - ±1.02
UPTO 12.0mm - ±0.25	UPTO 60.0mm - ±0.53	UPTO 200.0mm - ±1.14
UPTO 16.0mm - ±0.28	UPTO 80.0mm - ±0.69	UPTO 250.0mm - ±1.40
UPTO 25.0mm - ±0.30	UPTO 100.0mm - ±0.75	UPTO 300.0mm - ±1.65

1. STRAIGHTNESS=1.0mm/M
2. TWIST=1.0mm/M
3. ANGULARITY= ±1°
4. FLATNESS =0.007xWIDTH

 SYMBOL OF QUALITY AN ISO 9001 COMPANY	JINDAL ALUMINIUM LTD. BANGALORE-560073 (INDIA)	NAME	DATE
		DRAWN	PARVESH 07-07-2018
		CHECKED	
		APPROVED	B.NATARAJA 17-07-2018
		SCALE	1:1
		AREA mm ²	1199.099
		PERIMETER mm.	734.48
		WEIGHT kg/m	3.238
PARTY'S NAME	ALUFIT INDIA PVT. LTD., BANGALORE	DRAWING No.	SECTION No.
PARTY'S DRAWING No.	AS PER AUTOCAD DRAWING-AL-OR2-04	P-18411	-
ALLOY & TEMPER	6063 T6	E0886	E0886
DESCRIPTION	CURTAIN WALL SECTION-SILL TRANSOM		

1. ALL DIMENSIONS ARE IN mm.
2. ROUND OFF ALL SHARP CORNERS WITH 0.40 mm.
3. TOLERANCES WILL BE AS PER IS:6477-1983, UNLESS OTHERWISE SPECIFIED