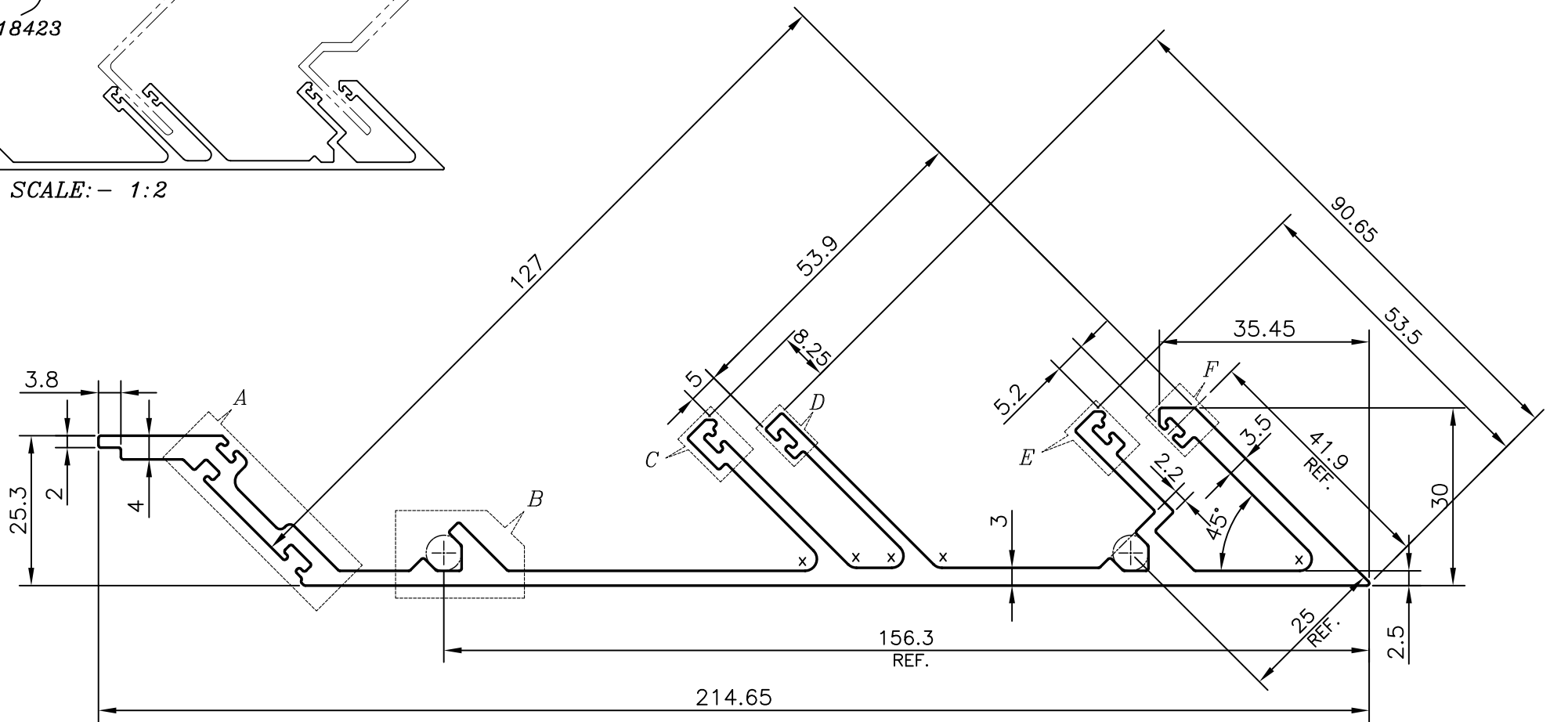
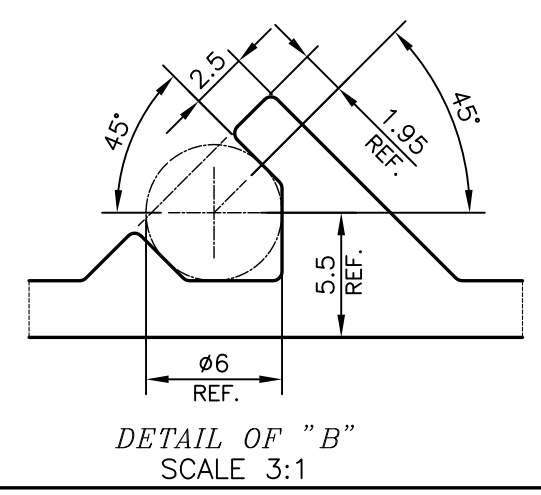
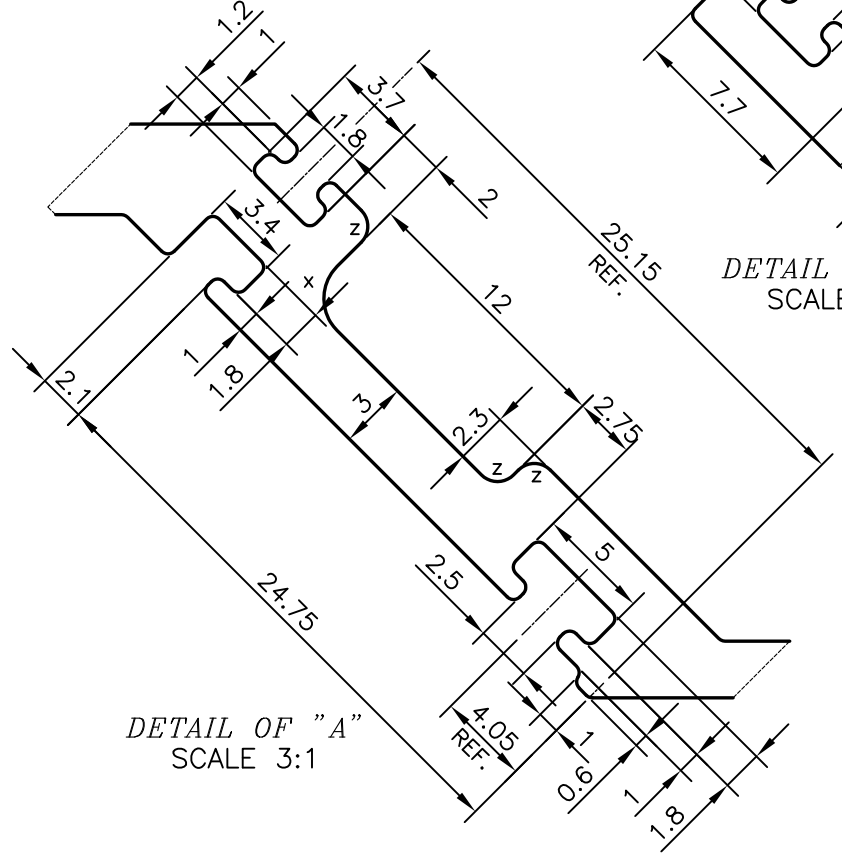
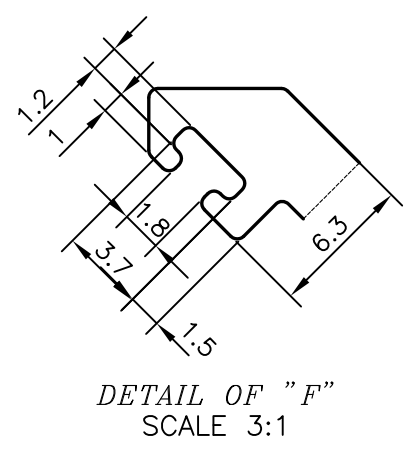
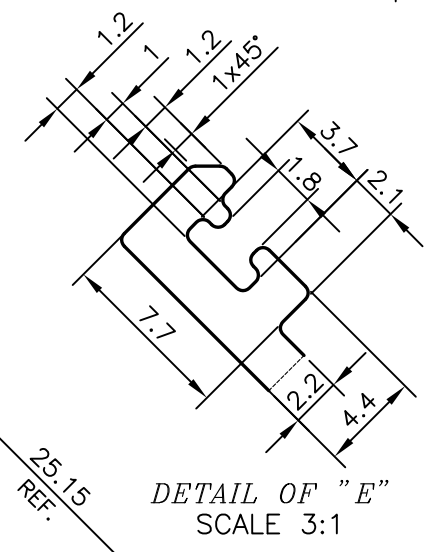
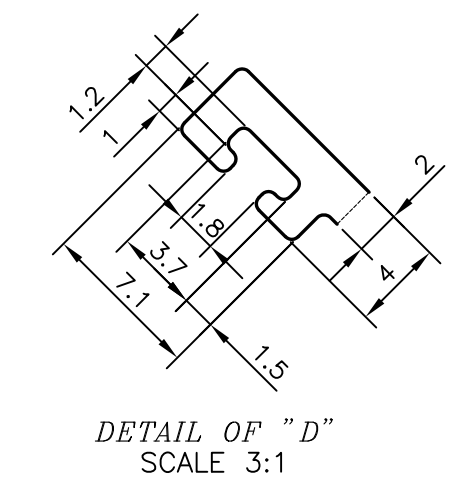
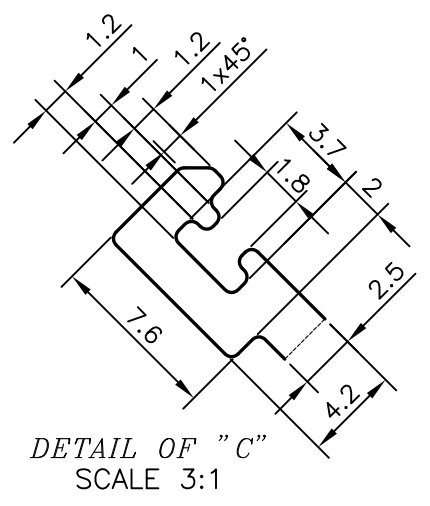
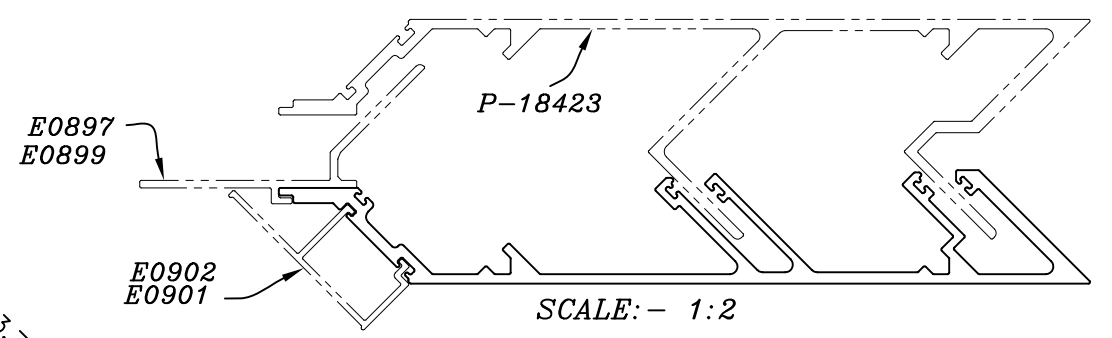


P-18424-1
E0894



X = RADIUS 2 mm. (5 PLACES)
Z = RADIUS 1 mm. (4 PLACES)

TOLERANCES ON OVERALL WIDTHS & WIDTHS ACROSS FLATS OF BARS, & REGULAR SECTIONS

UPTO 6.40mm - ±0.20	UPTO 32.0mm - ±0.38	UPTO 120.0mm - ±0.85
UPTO 10.0mm - ±0.23	UPTO 50.0mm - ±0.46	UPTO 160.0mm - ±1.02
UPTO 12.0mm - ±0.25	UPTO 60.0mm - ±0.53	UPTO 200.0mm - ±1.14
UPTO 16.0mm - ±0.28	UPTO 80.0mm - ±0.69	UPTO 250.0mm - ±1.40
UPTO 25.0mm - ±0.30	UPTO 100.0mm - ±0.75	UPTO 300.0mm - ±1.65

1. STRAIGHTNESS=1.0mm/M
2. TWIST=1.0mm/M
3. ANGULARITY= ±1°
4. FLATNESS =0.007xWIDTH

 SYMBOL OF QUALITY AN ISO 9001 COMPANY	JINDAL ALUMINIUM LTD. BANGALORE-560073 (INDIA)		NAME	DATE
			DRAWN	PARVESH
1. ALL DIMENSIONS ARE IN mm. 2. ROUND OFF ALL SHARP CORNERS WITH 0.40 mm. 3. TOLERANCES WILL BE AS PER IS:3965-1981, UNLESS OTHERWISE SPECIFIED			CHECKED	
			APPROVED	B.NATARAJA
PARTY'S NAME ALUFIT INDIA PVT. LTD., BANGALORE			SCALE	1:1
			AREA mm ²	1130.306
PARTY'S DRAWING No. AS PER AUTOCAD DRAWING-AL-OR2-08			PERIMETER mm.	805.768
			WEIGHT kg/m	3.052
ALLOY & TEMPER 6063 T6			DRAWING No.	SECTION No.
			P-18424-1	-
DESCRIPTION CURTAIN WALL SECTION-EXTERNAL CORNER FEMALE MULLION			E0894	E0894