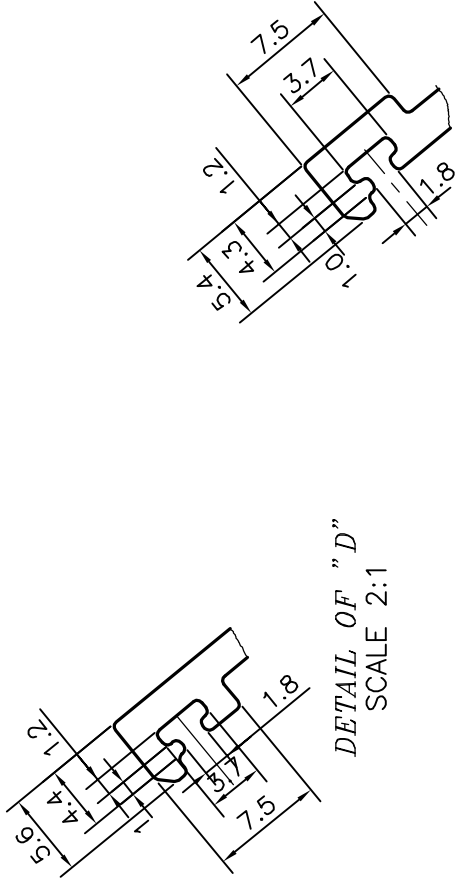
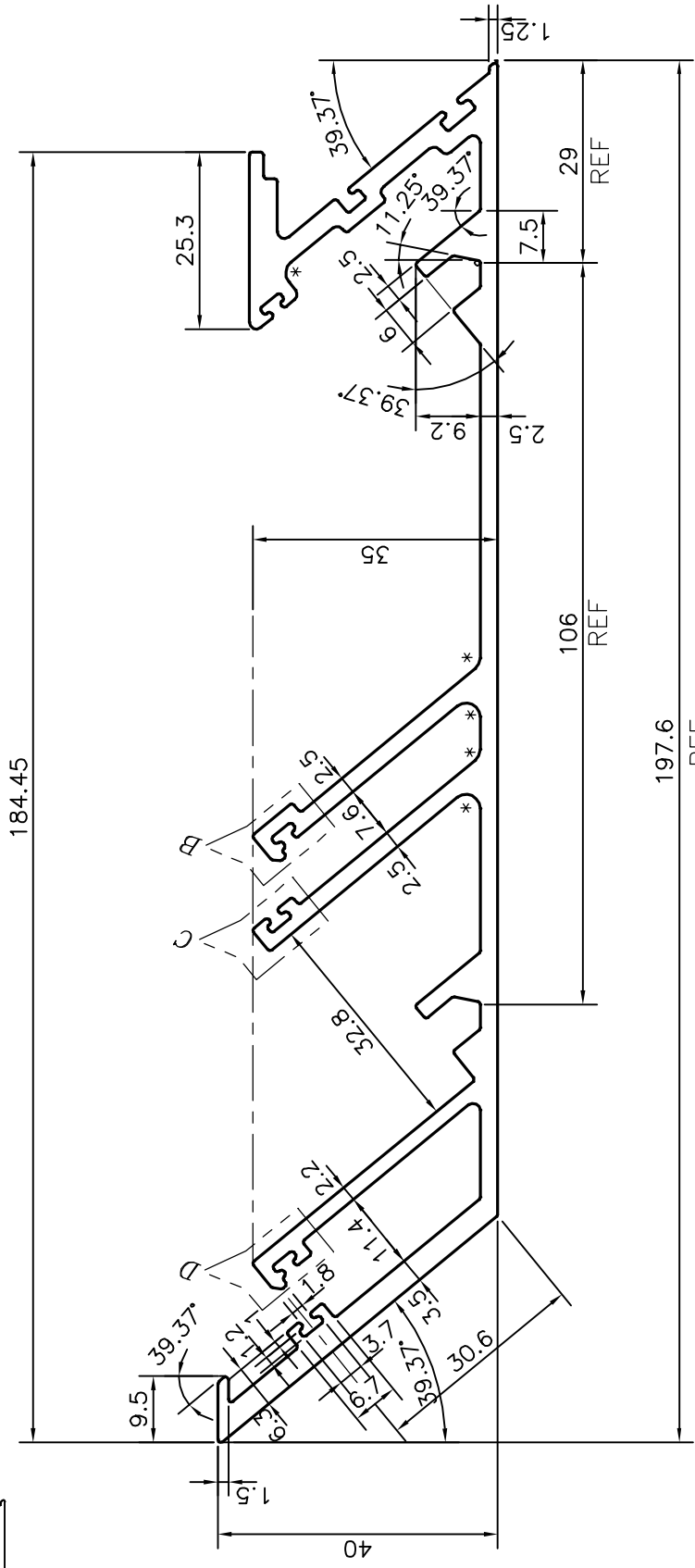
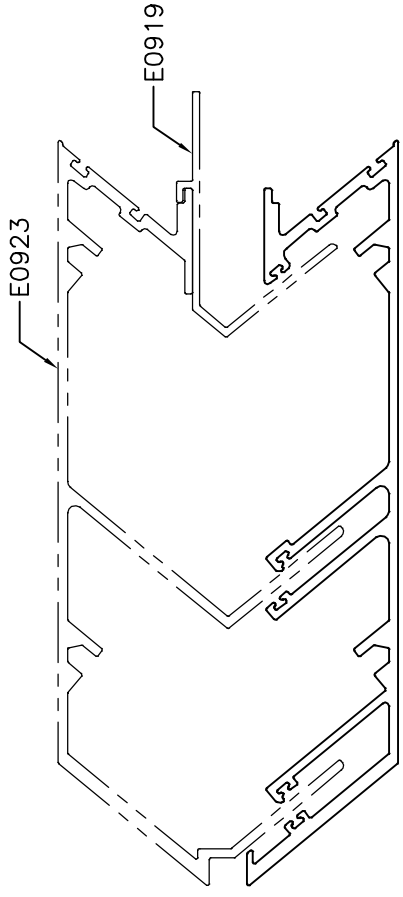
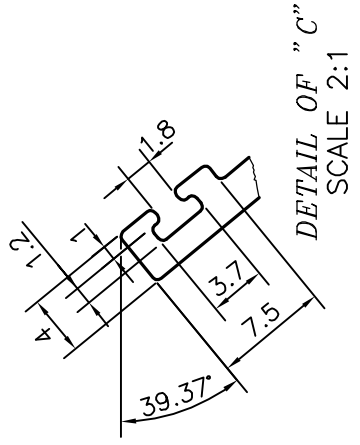
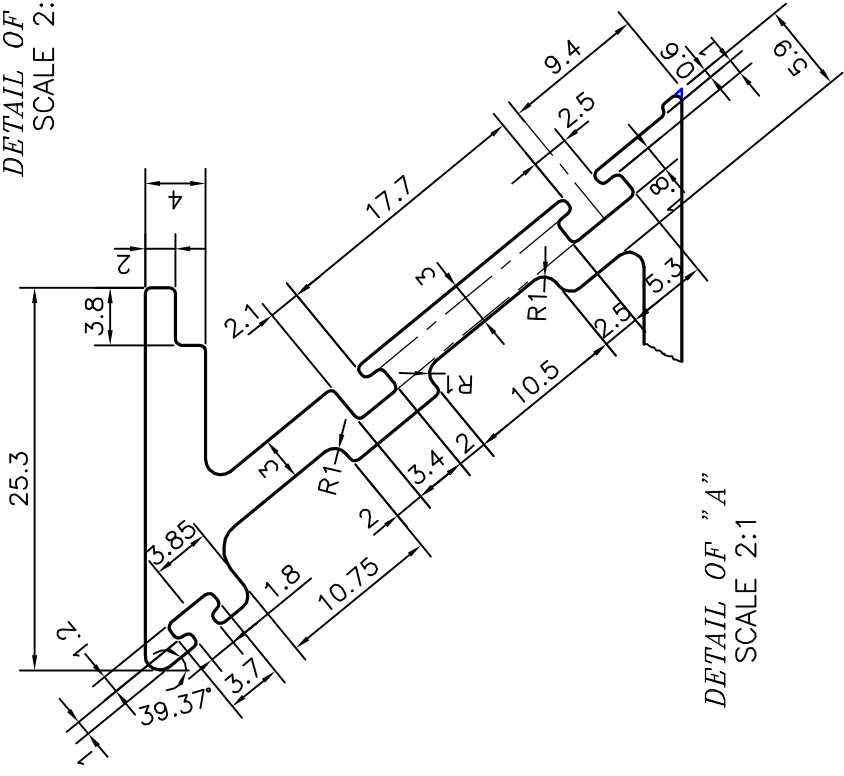


P-18466

E0922



DETAIL OF "B"  
SCALE 2:1



\* = RADIUS 2.0 (5 PLACES)

TOLERANCES ON OVERALL WIDTHS & WIDTHS ACROSS FLATS OF BARS, & REGULAR SECTIONS

	UPTO 6.40mm	UPTO 10.0mm	UPTO 12.0mm	UPTO 16.0mm	UPTO 25.0mm	UPTO 32.0mm	UPTO 50.0mm	UPTO 60.0mm	UPTO 80.0mm	UPTO 100.0mm	UPTO 120.0mm	UPTO 160.0mm	UPTO 200.0mm	UPTO 250.0mm	UPTO 300.0mm
1. STRAIGHTNESS	±0.20	±0.23	±0.25	±0.28	±0.30	±0.38	±0.46	±0.53	±0.69	±0.75	±0.85	±1.02	±1.14	±1.40	±1.65
2. TWIST	±0.20	±0.23	±0.25	±0.28	±0.30	±0.38	±0.46	±0.53	±0.69	±0.75	±1.02	±1.14	±1.40	±1.65	±1.65
3. ANGULARITY	±1'	±1'	±1'	±1'	±1'	±1'	±1'	±1'	±1'	±1'	±1'	±1'	±1'	±1'	±1'
4. FLATNESS	±0.07xWIDTH	±0.07xWIDTH	±0.07xWIDTH	±0.07xWIDTH	±0.07xWIDTH	±0.07xWIDTH	±0.07xWIDTH	±0.07xWIDTH	±0.07xWIDTH	±0.07xWIDTH	±0.07xWIDTH	±0.07xWIDTH	±0.07xWIDTH	±0.07xWIDTH	±0.07xWIDTH

JINDAL		JINDAL ALUMINIUM LTD.		BANGALORE-560073 (INDIA)	
SYMBOL OF QUALITY		AN ISO 9001 COMPANY		DRAWN	J.P.KAUSHIK
1. ALL DIMENSIONS ARE IN mm.		2. ROUND OFF ALL SHARP CORNERS WITH 0.40 mm.		CHECKED	
3. TOLERANCES WILL BE AS PER IS:3965-1981 UNLESS OTHERWISE SPECIFIED		PARTY'S NAME		APPROVED	B.NATARAJA
		ALUFIT (INDIA) PVT. LTD., BANGALORE		SCALE	1:1
		PARTY'S DRAWING No.		AREA	mm <sup>2</sup>
		AL-OR2-30		PERIMETER	mm.
		ALLOY & TEMPER		WEIGHT	kg/m
		6063 T6		DRAWING No.	SECTION No.
		DESCRIPTION		P-18466	-
		INTERNAL CORNER FEMALE MULLION		E0922	E0922