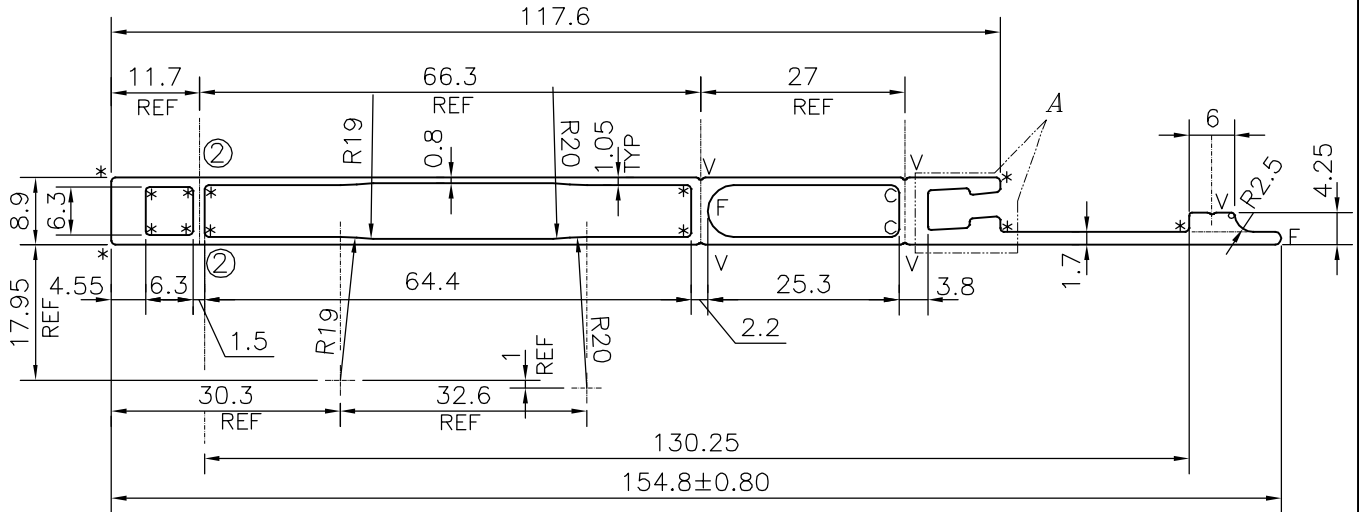


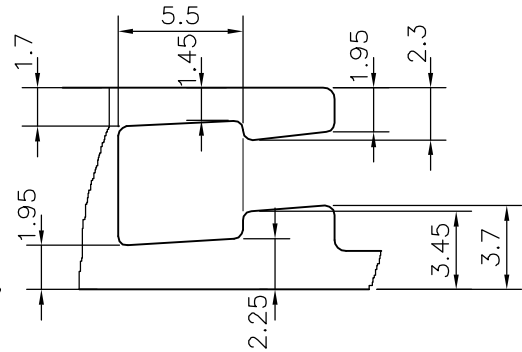
P-18478-2

E0931

ISSUE-2
 V GROOVE REMOVED 2 PLACES
 WEIGHT ALSO CHANGED FROM 1.148 TO 1.149 kg/m



DETAIL OF "A"
 SCALE 3:1



ISSUE-3

TOLERANCE ADDED ON 154.8 ±0.80
 DIMENSION ADDED 130.25

- * = 0.50 RADIUS (13 PLACES)
- V = V GROOVE 0.3x90° (5 PLACES)
- F = FULL RADIUS (2 PLACES)
- c = 1.0 RADIUS (2 PLACES)

TOLERANCES ON OVERALL DIMENSIONS OF HOLLOW SECTIONS

UPTO 20.0mm - ±0.30	UPTO 80.0mm - ±0.70	UPTO 180.0mm - ±1.27	1. STRAIGHTNESS=1.7mm/M 2. TWIST=1.7mm/M 3. ANGULARITY= ±2° 4. FLATNESS =0.006xWIDTH
UPTO 30.0mm - ±0.38	UPTO 100.0mm - ±0.80	UPTO 200.0mm - ±1.40	
UPTO 40.0mm - ±0.45	UPTO 120.0mm - ±0.90	UPTO 225.0mm - ±1.52	
UPTO 50.0mm - ±0.52	UPTO 140.0mm - ±1.00		
UPTO 60.0mm - ±0.60	UPTO 160.0mm - ±1.14		



SYMBOL OF QUALITY
 AN ISO 9001 COMPANY

JINDAL ALUMINIUM LTD.
 BANGALORE-560073 (INDIA)

	NAME	DATE
DRAWN	J.P.KAUSHIK	19-06-2019
CHECKED		
APPROVED	B.NATARAJA	25-06-2019
SCALE		1:1
AREA mm ²		425.638
PERIMETER mm.		352.064
WEIGHT kg/m		1.149
DRAWING No.	SECTION No.	
P-18478-2	-	
E0931	E0931 (ISSUE-3)	

1. ALL DIMENSIONS ARE IN mm.
2. ROUND OFF ALL SHARP CORNERS WITH 0.40 mm.
3. TOLERANCES WILL BE AS PER IS:6477-1983, UNLESS OTHERWISE SPECIFIED

PARTY'S NAME	YAMUNA ENTERPRISES, AHMEDABAD
PARTY'S DRAWING No.	AS PER Auto CAD DRAWING
ALLOY & TEMPER	6063 T6
DESCRIPTION	TEXTILE SECTION