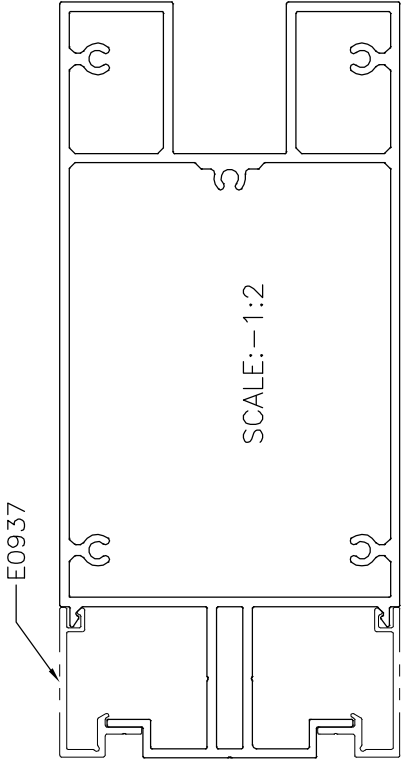
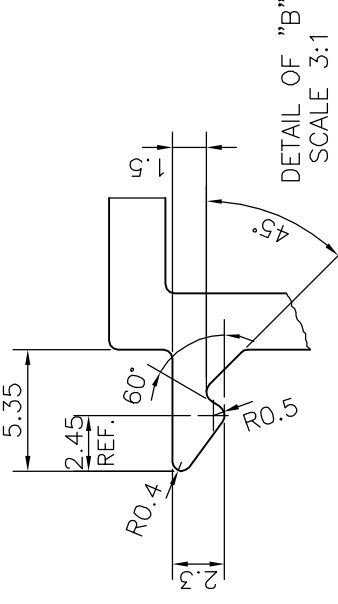
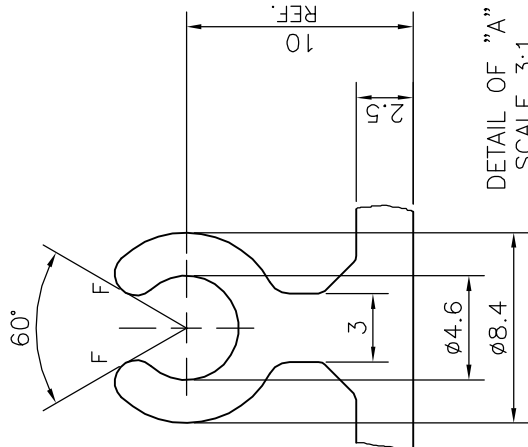
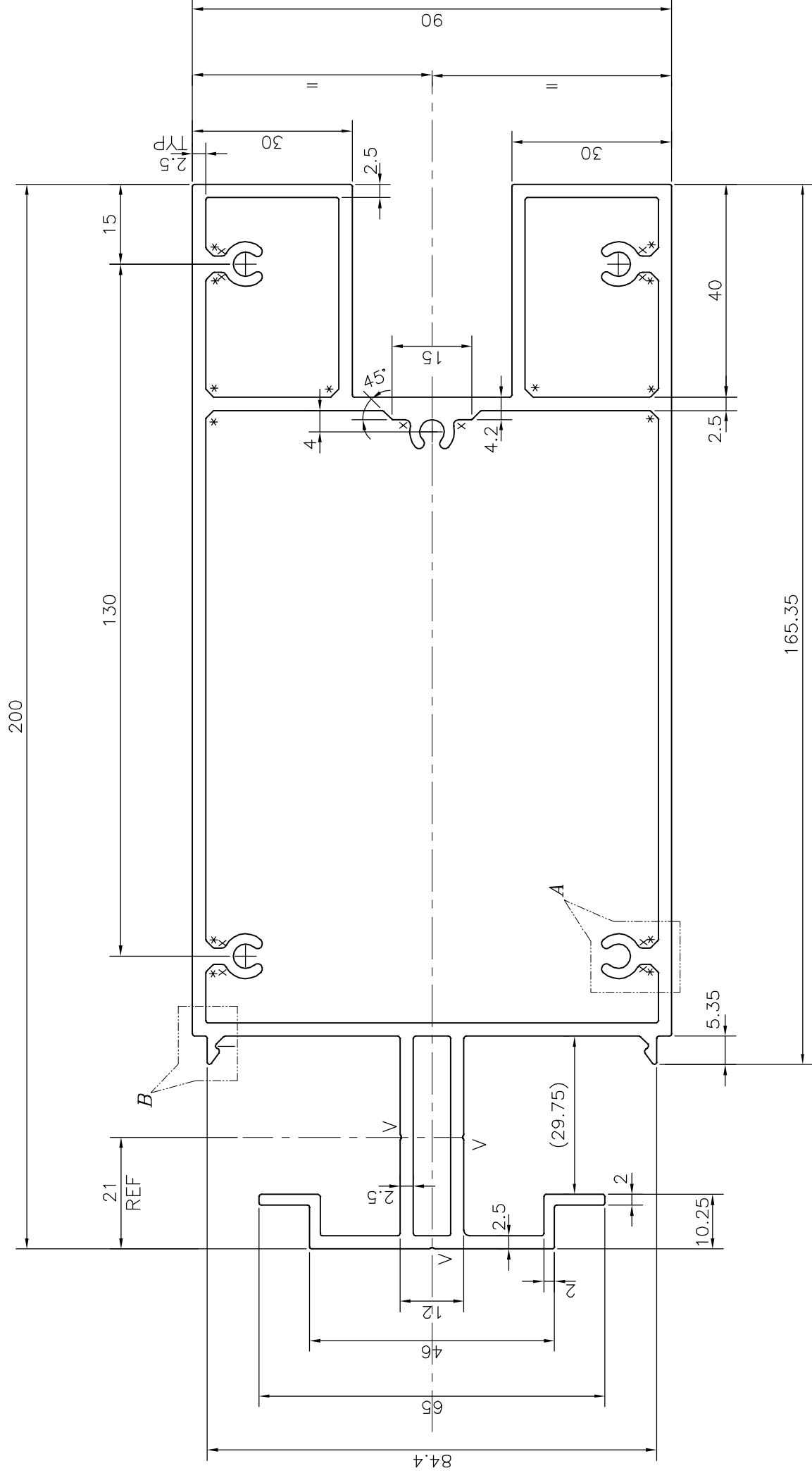


P-18592

E0938



- 1. STRAIGHTNESS=1.0mm/M
- 2. TWIST=1.0mm/M
- 3. ANGULARITY= ±1°
- 4. FLATNESS =0.007xWIDTH

- F = FULL RADIUS (8 PLACES)
- * = CHAMFER 1.5x45° (14 PLACES)
- x = RADIUS 1.0 (10 PLACES)
- V = V GROOVE 0.3x90° (3 PLACES)

TOLERANCES ON OVERALL WIDTHS & WIDTHS ACROSS FLATS OF BARS, & REGULAR SECTIONS

UPTO 6.40mm - ±0.20	UPTO 32.0mm - ±0.38	UPTO 120.0mm - ±0.85	UPTO 320.00mm - ±1.70
UPTO 10.0mm - ±0.23	UPTO 50.0mm - ±0.46	UPTO 160.0mm - ±1.02	
UPTO 12.0mm - ±0.25	UPTO 60.0mm - ±0.53	UPTO 200.0mm - ±1.14	
UPTO 16.0mm - ±0.28	UPTO 80.0mm - ±0.69	UPTO 250.0mm - ±1.40	
UPTO 25.0mm - ±0.30	UPTO 100.0mm - ±0.75	UPTO 300.0mm - ±1.65	

 SYMBOL OF QUALITY AN ISO 9001 COMPANY	JINDAL ALUMINIUM LTD. BANGALORE-560073 (INDIA)		
	DRAWN J.P.KAUSHIK 23-08-2018	CHECKED	NAME J.P.KAUSHIK
APPROVED B.NATARAJA 24-08-2018		SCALE 1:1	APPROVED B.NATARAJA 24-08-2018
1. ALL DIMENSIONS ARE IN mm. 2. ROUND OFF ALL SHARP CORNERS WITH 0.40 mm. 3. TOLERANCES WILL BE AS PER IS:6477-1983 UNLESS OTHERWISE SPECIFIED		AREA mm ² 2175.523	PERIMETER mm. 811.84
PARTY'S NAME ALUFIT (INDIA) PVT. LTD., BANGALORE	DRAWING No. PROFILE-T1-05	WEIGHT kg/m 5.874	SECTION No. -
ALLOY & TEMPER 6063 T6	DESCRIPTION VERTICAL FIN	P-18592 E0938	DRAWING No. - SECTION No. E0938