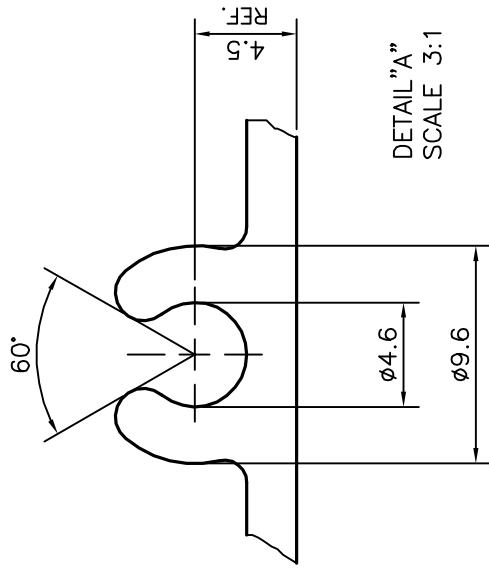
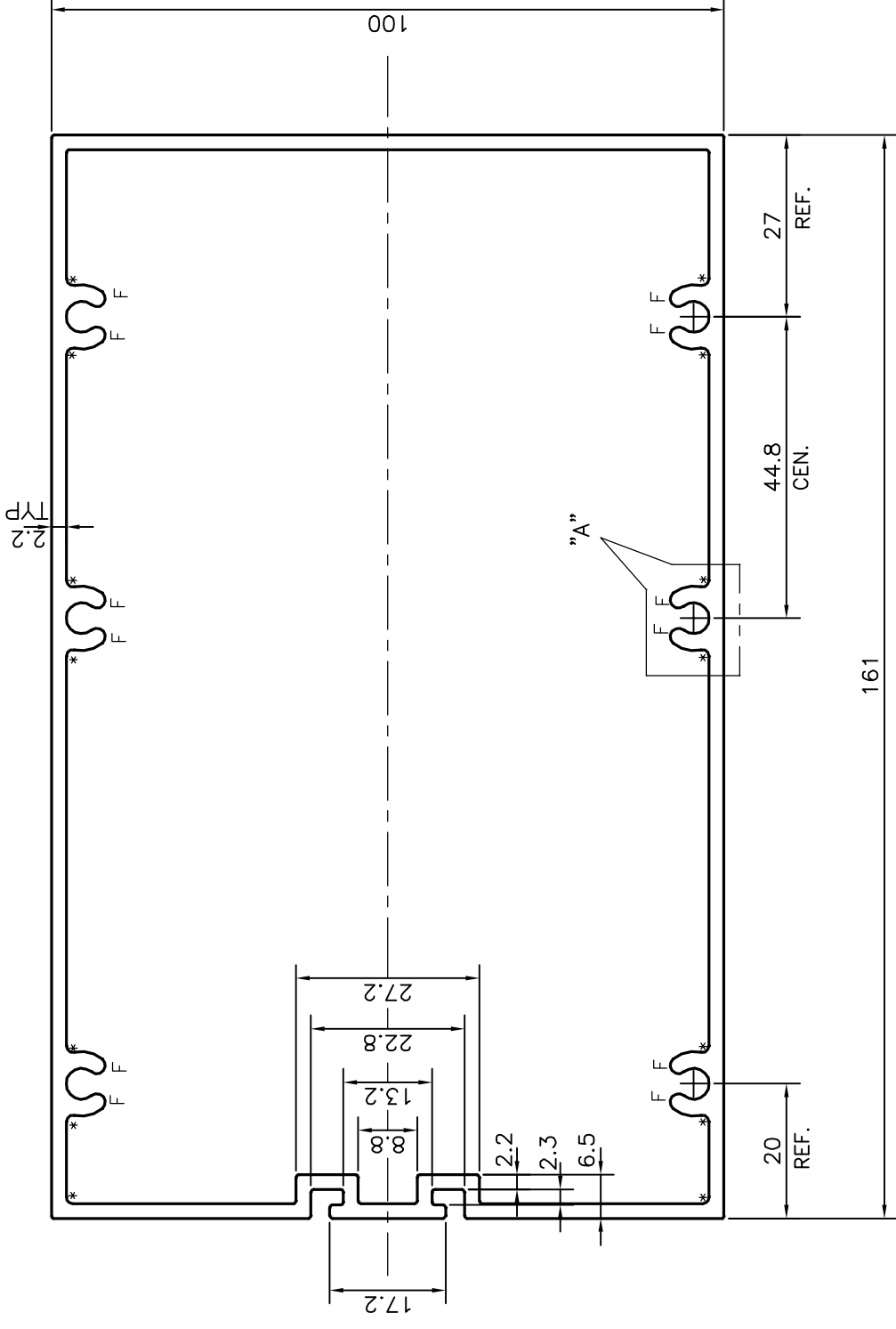
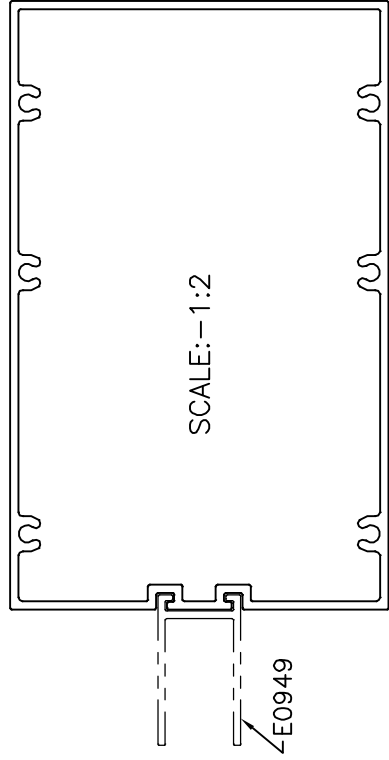


P-18602-1

E0948



DETAIL "A"  
SCALE 3:1




SCALE: -1:2

F = FULL RADIUS (12 PLACES)  
\* = RADIUS 1.0 (14 PLACES)

TOLERANCES ON OVERALL WIDTHS & WIDTHS ACROSS FLATS OF BARS, & REGULAR SECTIONS

UPTO 6.40mm - ±0.20	UPTO 32.0mm - ±0.38	UPTO 120.0mm - ±0.85	1. STRAIGHTNESS=1.0mm/M
UPTO 10.0mm - ±0.23	UPTO 50.0mm - ±0.46	UPTO 160.0mm - ±1.02	2. TWIST=1.0mm/M
UPTO 12.0mm - ±0.25	UPTO 60.0mm - ±0.53	UPTO 200.0mm - ±1.14	3. ANGULARITY= ±1°
UPTO 16.0mm - ±0.28	UPTO 80.0mm - ±0.69	UPTO 250.0mm - ±1.40	4. FLATNESS =0.007xWIDTH
UPTO 25.0mm - ±0.30	UPTO 100.0mm - ±0.75	UPTO 300.0mm - ±1.65	

 SYMBOL OF QUALITY AN ISO 9001 COMPANY	<b>JINDAL ALUMINIUM LTD.</b> BANGALORE-560073 (INDIA)		DRAWN J.P.KAUSHIK 29-08-2018
	1. ALL DIMENSIONS ARE IN mm. 2. ROUND OFF ALL SHARP CORNERS WITH 0.40 mm. 3. TOLERANCES WILL BE AS PER IS:6477-1983 UNLESS OTHERWISE SPECIFIED		CHECKED
PARTY'S NAME	ALUFIT (INDIA) PVT. LTD., BANGALORE	WEIGHT kg/m	3.673
PARTY'S DRAWING No.	PROFILE-T1/T2-13	DRAWING No.	SECTION No.
ALLOY & TEMPER	6063 T6	P-18602-1	E0948
DESCRIPTION	MID TRANSOM-TYPICAL		

JINDAL  
SYMBOL OF QUALITY  
AN ISO 9001 COMPANY

**JINDAL ALUMINIUM LTD.**  
BANGALORE-560073 (INDIA)

1. ALL DIMENSIONS ARE IN mm.  
2. ROUND OFF ALL SHARP CORNERS WITH 0.40 mm.  
3. TOLERANCES WILL BE AS PER IS:6477-1983 UNLESS OTHERWISE SPECIFIED

PARTY'S NAME	ALUFIT (INDIA) PVT. LTD., BANGALORE	WEIGHT kg/m	3.673
PARTY'S DRAWING No.	PROFILE-T1/T2-13	DRAWING No.	SECTION No.
ALLOY & TEMPER	6063 T6	P-18602-1	E0948
DESCRIPTION	MID TRANSOM-TYPICAL		