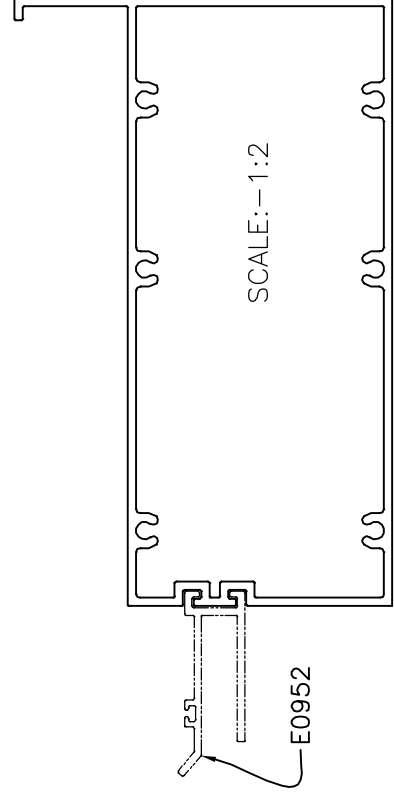
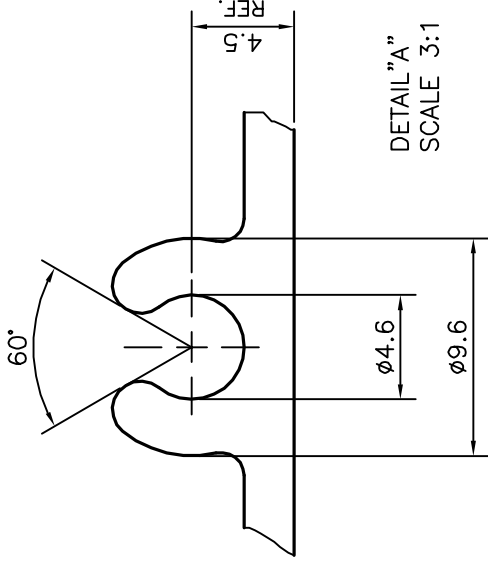
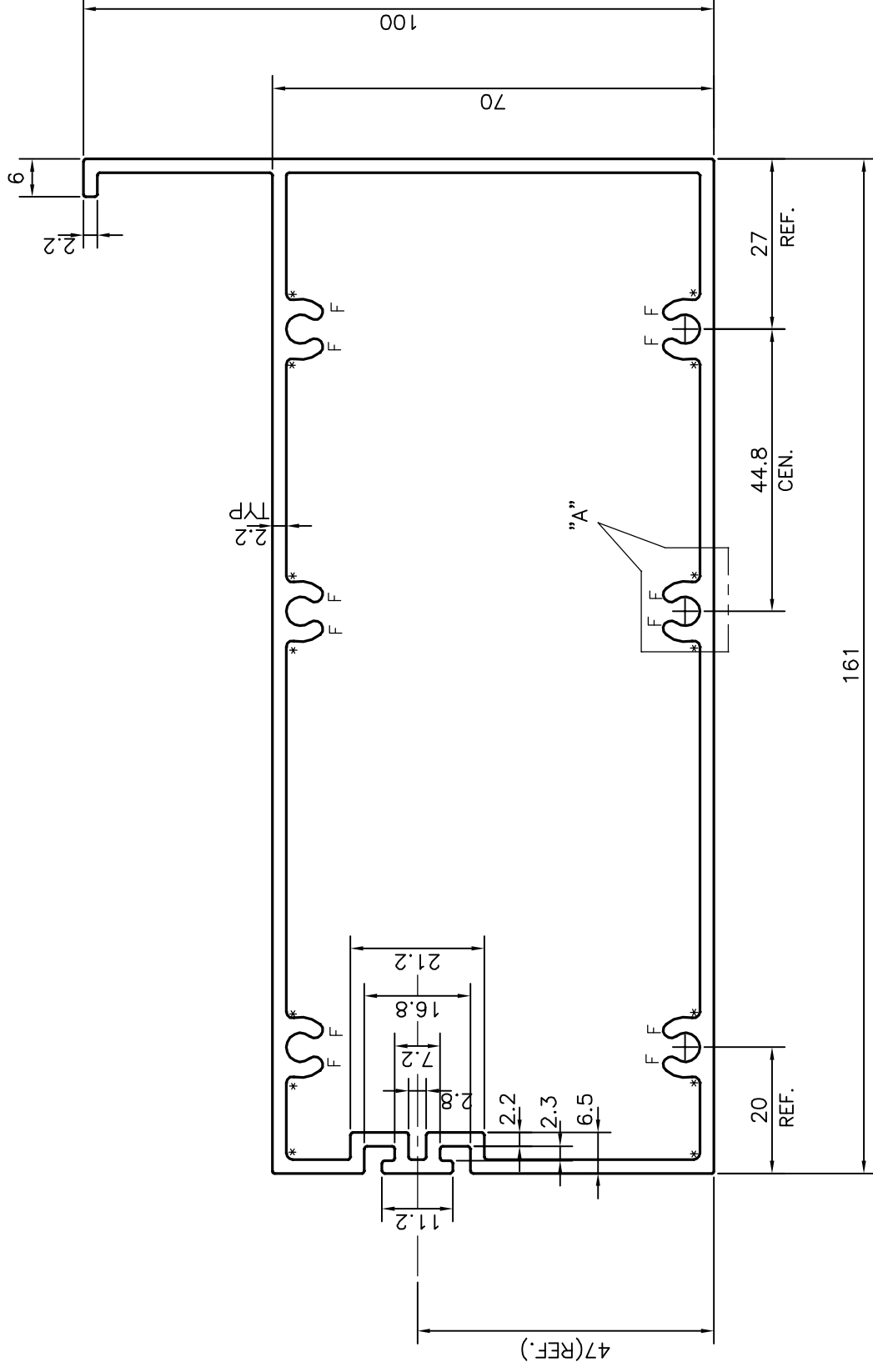


P-18605-1

E0951



F = FULL RADIUS (12 PLACES)
* = RADIUS 1.0 (14 PLACES)

TOLERANCES ON OVERALL WIDTHS & WIDTHS ACROSS FLATS OF BARS, & REGULAR SECTIONS

UPTO 6.40mm - ± 0.20	UPTO 32.0mm - ± 0.38	UPTO 120.0mm - ± 0.85	1. STRAIGHTNESS=1.0mm/M
UPTO 10.0mm - ± 0.23	UPTO 50.0mm - ± 0.46	UPTO 160.0mm - ± 1.02	2. TWIST=1.0mm/M
UPTO 12.0mm - ± 0.25	UPTO 60.0mm - ± 0.53	UPTO 200.0mm - ± 1.14	3. ANGULARITY= $\pm 1^\circ$
UPTO 16.0mm - ± 0.28	UPTO 80.0mm - ± 0.69	UPTO 250.0mm - ± 1.40	4. FLATNESS =0.007xWIDTH
UPTO 25.0mm - ± 0.30	UPTO 100.0mm - ± 0.75	UPTO 300.0mm - ± 1.65	



SYMBOL OF QUALITY
AN ISO 9001 COMPANY

JINDAL ALUMINIUM LTD.
BANGALORE-560073 (INDIA)

1. ALL DIMENSIONS ARE IN mm.
2. ROUND OFF ALL SHARP CORNERS WITH 0.40 mm.
3. TOLERANCES WILL BE AS PER IS:6477-1983 UNLESS OTHERWISE SPECIFIED

PARTY'S NAME ALUFIT (INDIA) PVT. LTD., BANGALORE

PARTY'S DRAWING No. PROFILE-T1-14

ALLOY & TEMPER 6063 T6

DESCRIPTION MID TRANSOM-SASH TOP

DRAWN	J.P.KAUSHIK	29-08-2018
CHECKED		
APPROVED	B.NATARAJA	01-09-2018
SCALE		1:1
AREA	mm ²	1302.833
PERIMETER	mm.	551.495
WEIGHT	kg/m	3.518
DRAWING No.		SECTION No.
P-18605-1		-
E0951		E0951