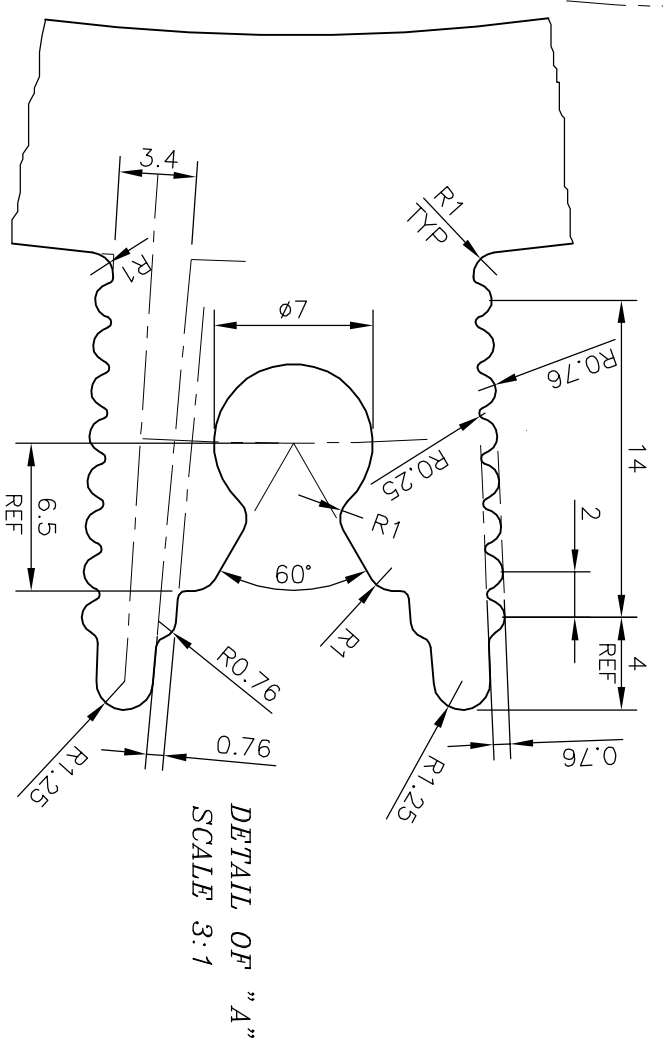
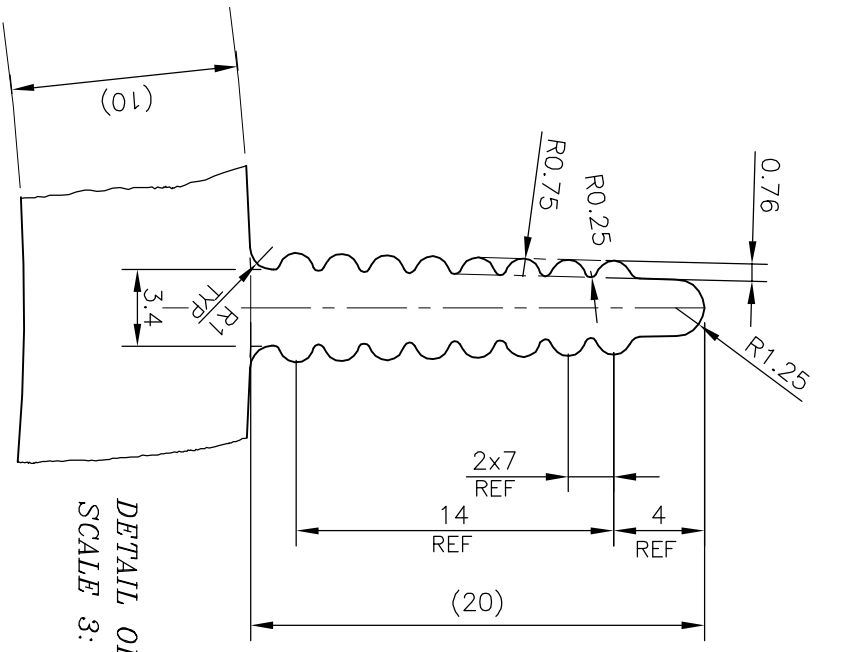


FIN'S DETAILS WILL BE AS PER "DETAIL OF B"



<p>SYMBOL OF QUALITY AN ISO 9001 COMPANY</p>	<p>JINDAL ALUMINIUM LTD. BANGALORE-560073 (INDIA)</p>		<p>NAME: J.P. KAUSHIK DATE: 12-10-2018</p>
	<p>1. ALL DIMENSIONS ARE IN mm. 2. ROUND OFF ALL SHARP CORNERS WITH 0.40 mm. 3. TOLERANCES WILL BE AS PER IS:6477-1983 UNLESS OTHERWISE SPECIFIED</p>		<p>CHECKED: [] APPROVED: B.NATARAJA 03-11-2018</p>
PARTY'S NAME	MAHINDRA ELECTRIC MOBILITY LTD., BANGALORE	SCALE	1:1
PARTY'S DRAWING No.	2201AAZ00610N REV.2	AREA mm ²	9261.891
ALLOY & TEMPER	6063 T6	PERIMETER mm.	2363.815
DESCRIPTION	MOTOR STATOR FRAME SECTION	WEIGHT kg/m	25.007
		DRAWING No.	P-18569-1
		SECTION No.	-
			E0981
			E0981