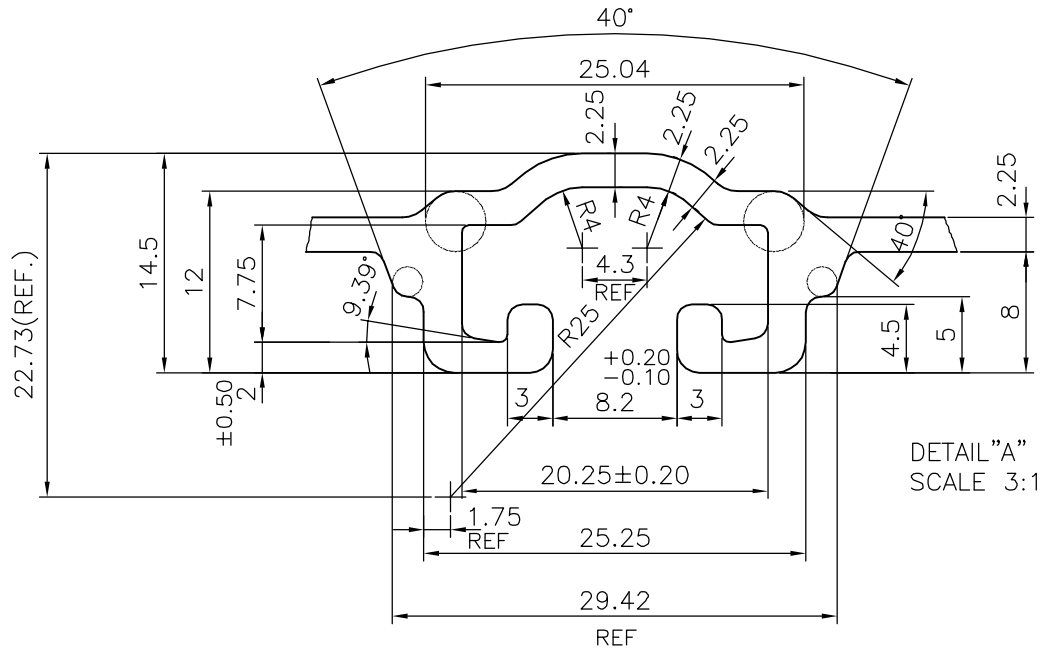
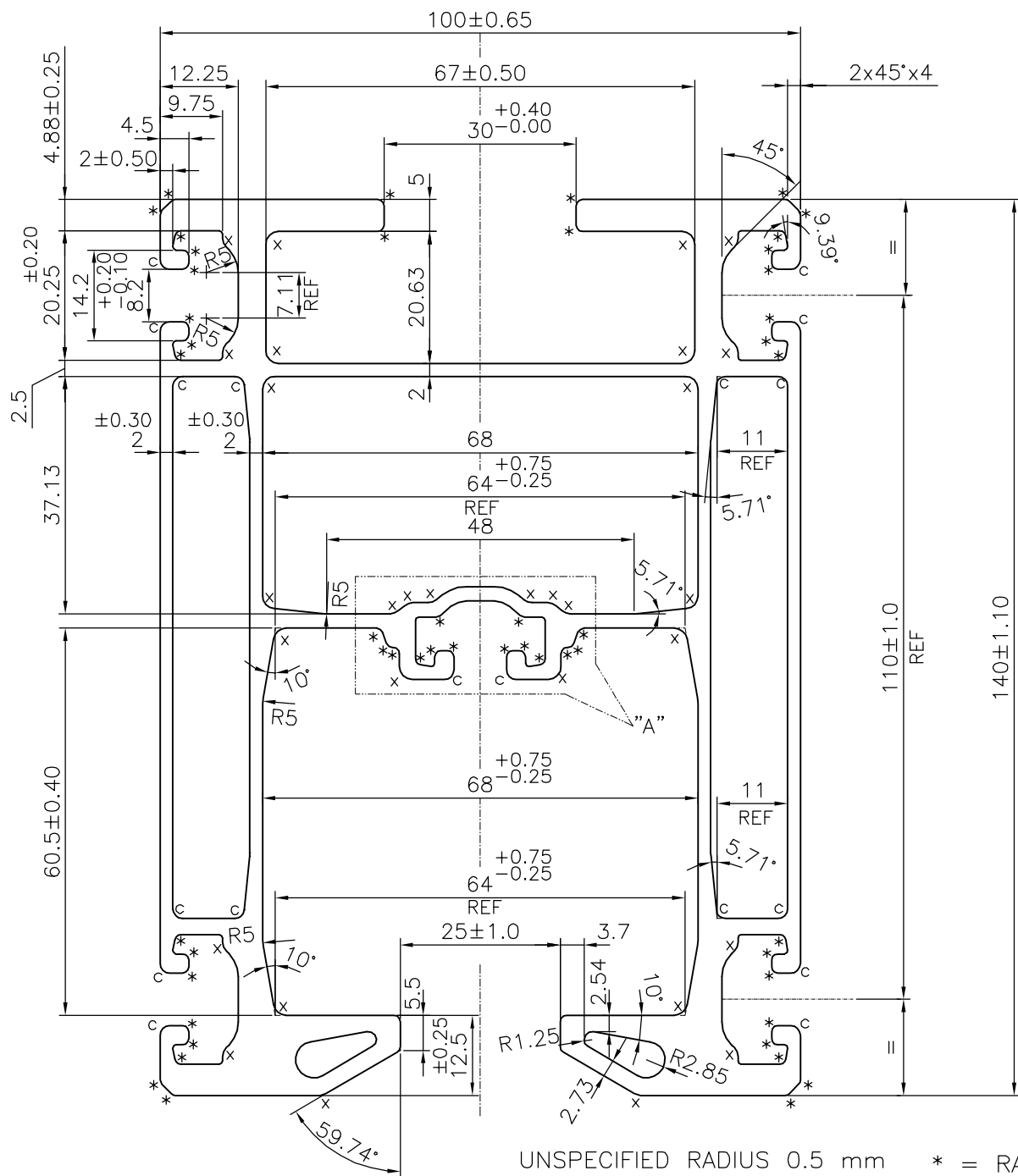


P-18654

E0985




DETAIL "A"
SCALE 3:1



UNSPECIFIED RADIUS 0.5 mm * = RADIUS 1.0 (46 PLACES)
 x = RADIUS 2.0 (24 PLACES)
 c = RADIUS 1.5 (16 PLACES)

TOLERANCES ON OVERALL DIMENSIONS OF HOLLOW SECTIONS

UPTO 20.0mm - ±0.30	UPTO 80.0mm - ±0.70	UPTO 180.0mm - ±1.27	1. STRAIGHTNESS=1.7mm/M 2. TWIST=1.7mm/M 3. ANGULARITY= ±2° 4. FLATNESS =0.006xWIDTH
UPTO 30.0mm - ±0.38	UPTO 100.0mm - ±0.80	UPTO 200.0mm - ±1.40	
UPTO 40.0mm - ±0.45	UPTO 120.0mm - ±0.90	UPTO 225.0mm - ±1.52	
UPTO 50.0mm - ±0.52	UPTO 140.0mm - ±1.00		
UPTO 60.0mm - ±0.60	UPTO 160.0mm - ±1.14		

 SYMBOL OF QUALITY AN ISO 9001 COMPANY	JINDAL ALUMINIUM LTD. BANGALORE-560073 (INDIA)	NAME	DATE
		DRAWN	J.P.KAUSHIK
1. ALL DIMENSIONS ARE IN mm. 2. ROUND OFF ALL SHARP CORNERS WITH 0.40 mm. 3. TOLERANCES WILL BE AS PER IS:6477-1983 UNLESS OTHERWISE SPECIFIED		CHECKED	
		APPROVED	B.NATARAJA
PARTY'S NAME JENDAMARK TECHCELLENCY AUTOMATION, PUNE		SCALE	1:1
		AREA mm ²	2705.103
PARTY'S DRAWING No. AS PER DRAWING-0011017 REV. 5		PERIMETER mm.	1066.526
		WEIGHT kg/m	7.304
ALLOY & TEMPER 6063 T66		DRAWING No.	SECTION No.
		P-18654	-
DESCRIPTION MISC. SECTION		E0985	E0985