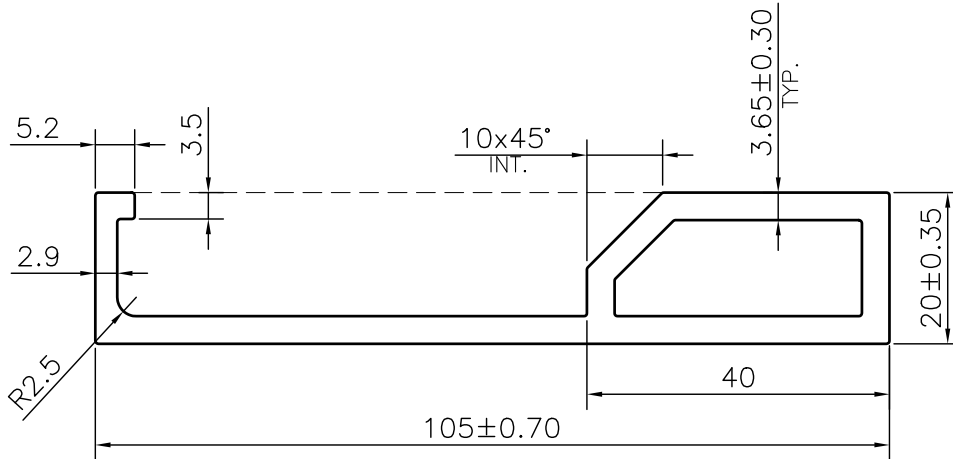


P-JAL-B-379-2

E101677



1. STRAIGHTNESS= 1.7mm/M
2. TWIST= 1.7mm/M
3. ANGULARITY= ±2°
4. FLATNESS= 0.007xWIDTH

Q01047

CONTROLLED COPY



SYMBOL OF QUALITY
AN ISO 9001 COMPANY

JINDAL ALUMINIUM LTD.
BHIWADI-301019 (INDIA)

	NAME	DATE
DRAWN	ASHUTOSH	24-11-2023
CHECKED	PARVESH	07-12-2023
APPROVED	R.G.PAREKH	07-12-2023

1. ALL DIMENSIONS ARE IN mm.
2. ROUND OFF ALL SHARP CORNERS WITH 0.40 mm.
3. TOLERANCES WILL BE AS PER DIN EN-12020-2, UNLESS OTHERWISE SPECIFIED

SCALE	1:1
AREA mm ²	659.636
PERIMETER mm.	278.961
WEIGHT kg/m	1.781

PARTY'S NAME	VIJAY ENGINEERING WORKS, JALANDHAR	
PARTY'S DRAWING No.	AS PER DRAWING-S_B	
ALLOY & TEMPER	6061 T6	PRODUCT CODE:-029
		HSN CODE:- 76042100
DESCRIPTION	SCAFFOLDING SECTION	

DRAWING No.	SECTION No.
P-JAL-B-379-2	7000001841
E101677	E101677