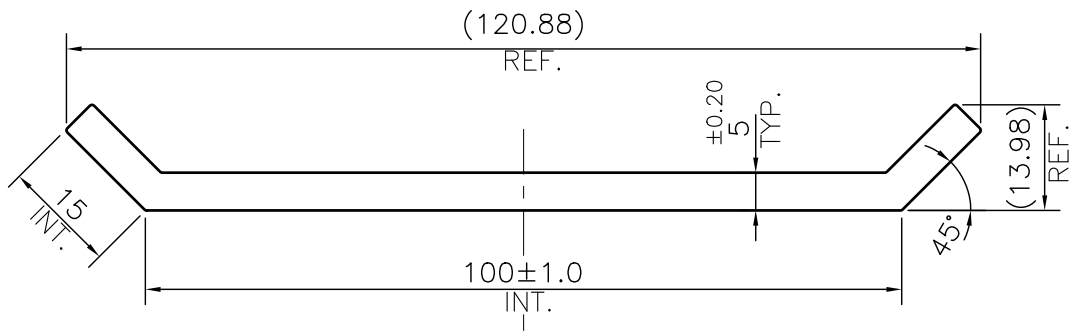


P-JAL-B-397

E101679



1. STRAIGHTNESS= 1.7mm/M
2. TWIST= 1.7mm/M
3. ANGULARITY= ±2°
4. FLATNESS= 0.007xWIDTH

Q01106

CONTROLLED COPY



SYMBOL OF QUALITY  
AN ISO 9001 COMPANY

**JINDAL ALUMINIUM LTD.**  
BHIWADI-301019 (INDIA)

	NAME	DATE
DRAWN	ASHUTOSH	04-12-2023
CHECKED	PARVESH	07-12-2023
APPROVED	R.G.PAREKH	07-12-2023

1. ALL DIMENSIONS ARE IN mm.
2. ROUND OFF ALL SHARP CORNERS WITH 0.40 mm.
3. TOLERANCES WILL BE AS PER BS:EN-755-9 , UNLESS OTHERWISE SPECIFIED

SCALE	1:1
AREA mm <sup>2</sup>	629.152
PERIMETER mm.	260.96
WEIGHT kg/m	1.699

PARTY'S NAME	VIJAY ENGINEERING WORKS		DRAWING No.	SECTION No.
PARTY'S DRAWING No.	AS PER DRAWING		P-JAL-B-397	7000001844
ALLOY & TEMPER	6061 T6	PRODUCT CODE:-029	E101679	E101679
		HSN CODE:- 76042990		
DESCRIPTION	SCAFFOLDING SECTION			