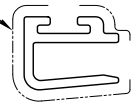


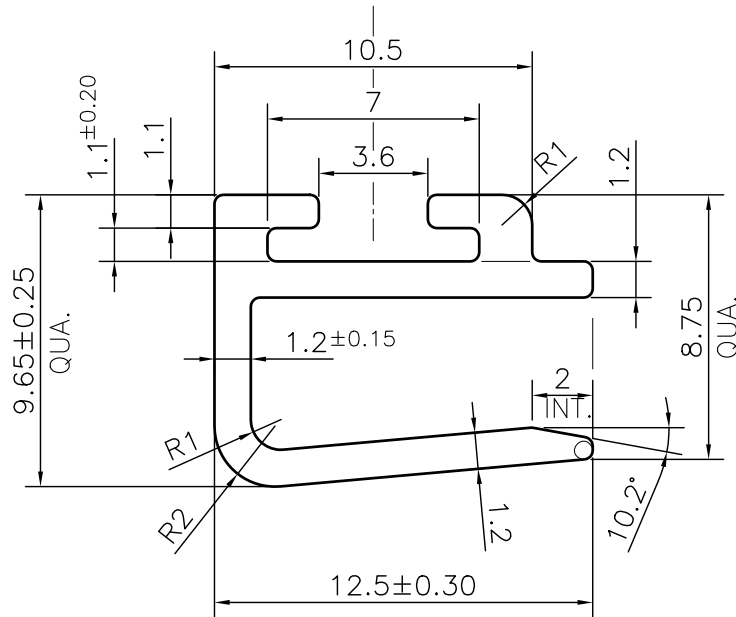
P-JAL-B-463-1

E102180

-EXPOSED SURFACE



SCALE 1:1



- ☞ Face surface roughness Ra 1.6
- ☞ ROUND OFF ALL SHARP CORNERS WITH 0.30 mm.

TOLERANCE CHART CD = CIRCUMSCRIBING CIRCLE

DIMENSION	CD<100	100<CD<200	200<CD<300	300<CD<500
UPTO 10 mm	±0.25	±0.30	±0.35	±0.40
10.0 -25.0	±0.30	±0.40	±0.50	±0.60
25.0 -50.0	±0.50	±0.60	±0.80	±0.90
50.0 -100	±0.70	±0.90	±1.10	±1.30
100 - 150	-	±1.10	±1.30	±1.50
150 - 200	-	±1.3	±1.50	±1.80
200 - 300	-	-	±1.70	±2.10
300 - 450	-	-	-	±2.80

Q01259

CONTROLLED COPY

1. STRAIGHTNESS= 1.7mm/M
2. TWIST= 1.7mm/M
3. ANGULARITY= ±2°
4. FLATNESS= 0.007xWIDTH



SYMBOL OF QUALITY  
AN ISO 9001 COMPANY

**JINDAL ALUMINIUM LTD.**  
BHIWADI-301019 (INDIA)

	NAME	DATE
DRAWN	ASHUTOSH	05-04-2024
CHECKED	PARVESH	26-04-2024
APPROVED	J.N.RAI	29-04-2024

1. ALL DIMENSIONS ARE IN mm.
2. ROUND OFF ALL SHARP CORNERS WITH 0.30 mm.
3. TOLERANCES WILL BE AS PER BS:EN-755-9 , UNLESS OTHERWISE SPECIFIED

SCALE	4:1
AREA mm <sup>2</sup>	46.123
PERIMETER mm.	74.07
WEIGHT kg/m	0.125

PARTY'S NAME	GECKO MOTORS PRIVATE LIMITED, CHANDIGARH	
PARTY'S DRAWING No.	AS PER PROPOSAL DRAWING - SP745	
ALLOY & TEMPER	6063 T6	PRODUCT CODE:-085
		HSN CODE:- 76042990
DESCRIPTION	AUTOMOBILE SECTION	

DRAWING No.	SECTION No.
P-JAL-B-463-1	7000002350
E102180	E102180