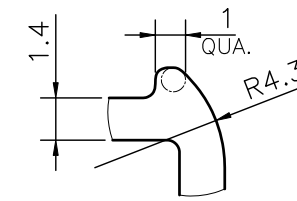
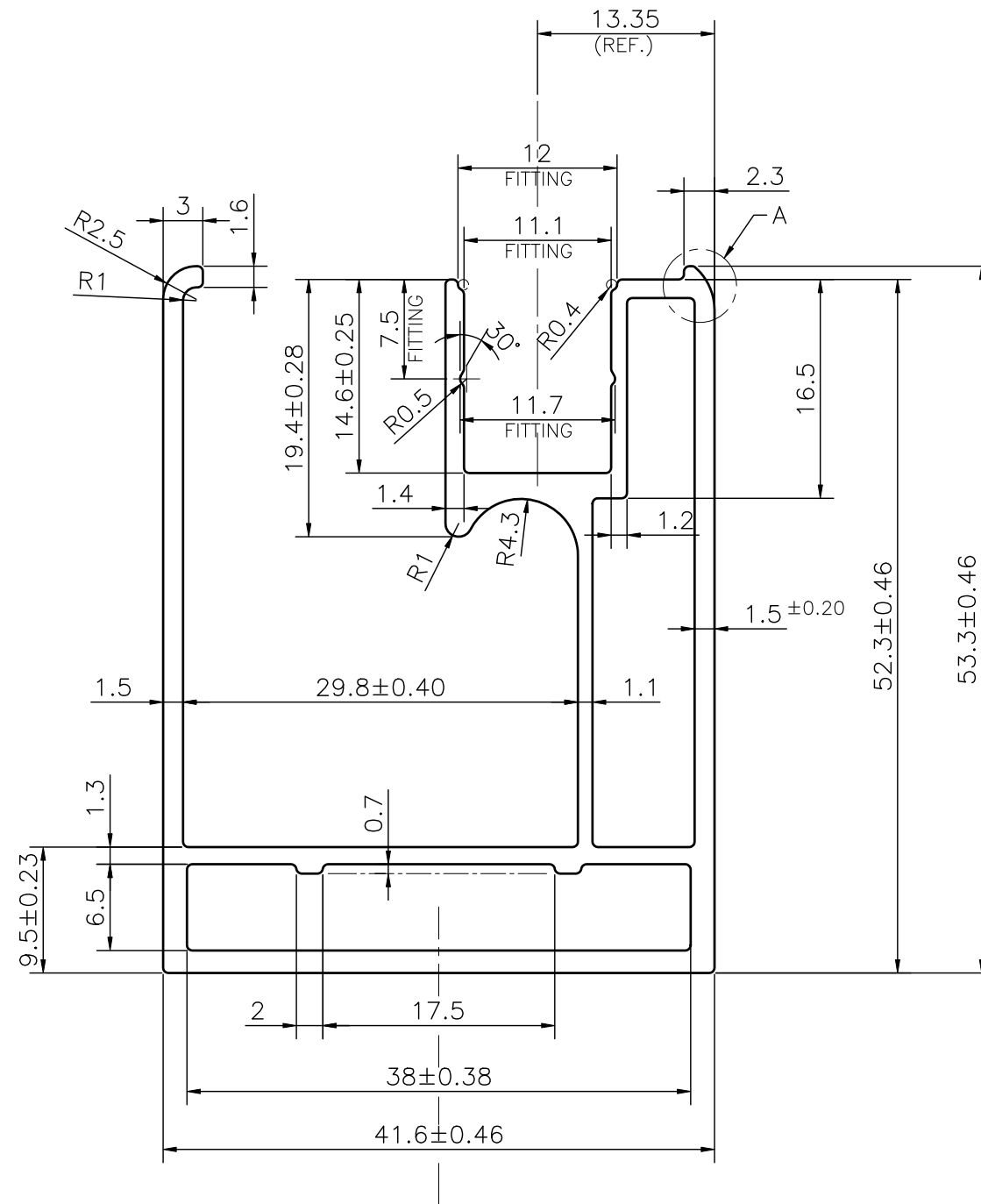
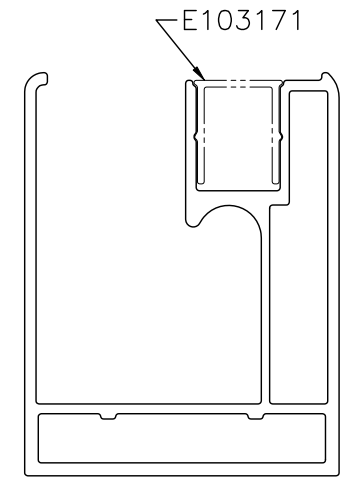


P-JAL-B-828

E103166



DETAIL A
SCALE 4:1



MATCHING
SCALE 1:1

1. STRAIGHTNESS= 1.7mm/M
2. TWIST= 1.7mm/M
3. ANGULARITY= ±2°
4. FLATNESS= 0.007xWIDTH

Q02547

CONTROLLED COPY



SYMBOL OF QUALITY
AN ISO 9001 COMPANY

JINDAL ALUMINIUM LTD.
BHIWADI-301019 (INDIA)

1. ALL DIMENSIONS ARE IN mm.
2. ROUND OFF ALL SHARP CORNERS WITH 0.40 mm.
3. TOLERANCES WILL BE AS PER BS:EN-755-9 , UNLESS OTHERWISE SPECIFIED

PARTY'S NAME	JAGUAR GROUP PVT. LTD., BHIWADI (RAJ.)	
PARTY'S DRAWING No.	AS PER DRAWING - JQ0-2002	
ALLOY & TEMPER	6063 T6	PRODUCT CODE:- 085 HSN CODE:- 76042100
DESCRIPTION	INDUSTRIAL SECTION-OPTIMA TOP GUIDE RAIL CHANNEL	

	NAME	DATE
DRAWN	ASHUTOSH	19-11-2024
CHECKED	PARVESH	29-11-2024
APPROVED	J.N.RAI	29-11-2024
SCALE		2:1
AREA mm ²		394.018
PERIMETER mm.		326.183
WEIGHT kg/m		1.064
DRAWING No.	SECTION No.	
P-JAL-B-828	7000003360	
E103166	E103166	