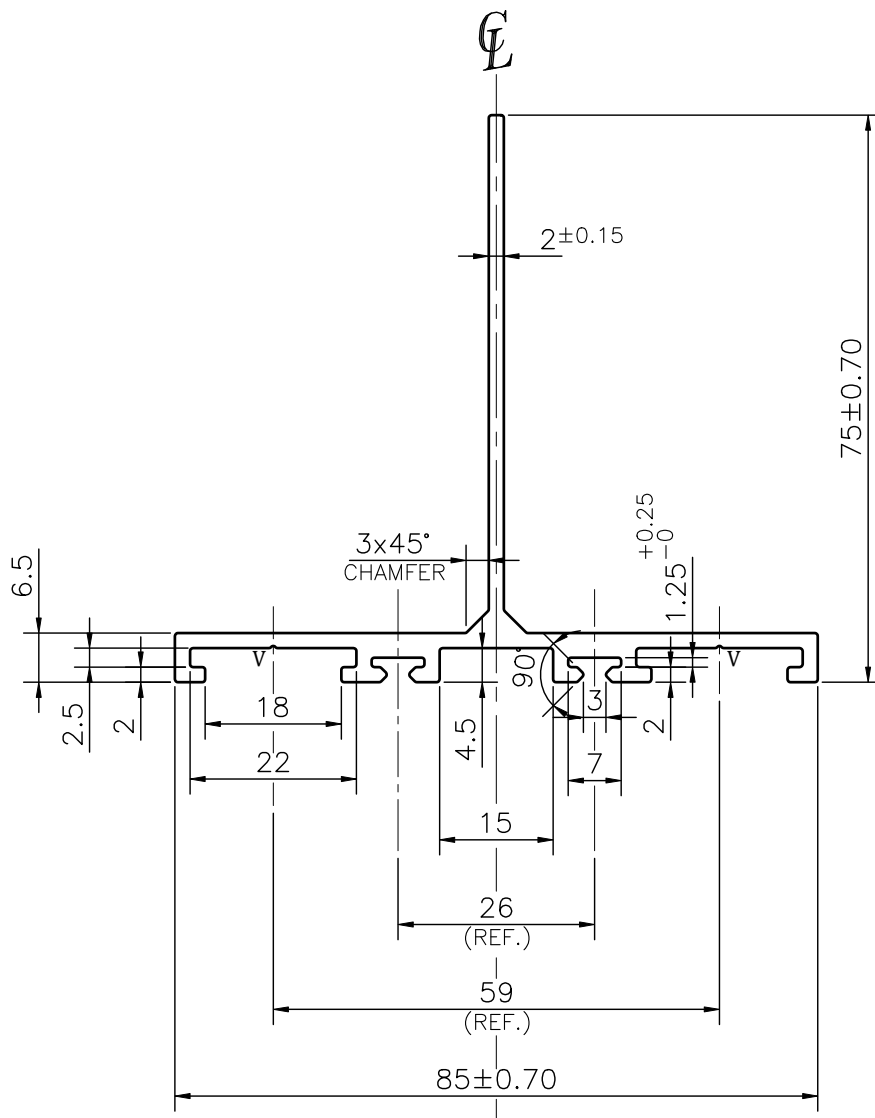


P-JAL-B-843

E103262



**NOTE:-**  
**V= 0.3x90° V-GROOVE (2 PLACES)**

1. STRAIGHTNESS= 1.7mm/M
2. TWIST= 1.7mm/M
3. ANGULARITY= ±2°
4. FLATNESS= 0.007xWIDTH

Q02715

CONTROLLED COPY



SYMBOL OF QUALITY  
 AN ISO 9001 COMPANY

**JINDAL ALUMINIUM LTD.**  
 BHIWADI-301019 (INDIA)

	NAME	DATE
DRAWN	ASHUTOSH	04-12-2024
CHECKED	PARVESH	19-12-2024
APPROVED	J.N.RAI	19-12-2024
SCALE		1:1
AREA mm <sup>2</sup>		416.408
PERIMETER mm.		378.77
WEIGHT kg/m		1.124
DRAWING No.		SECTION No.
P-JAL-B-843		7000003470
E103262		E103262

1. ALL DIMENSIONS ARE IN mm.
2. ROUND OFF ALL SHARP CORNERS WITH 0.40 mm.
3. TOLERANCES WILL BE AS PER BS:EN-755-9 , UNLESS OTHERWISE SPECIFIED

PARTY'S NAME	NEW ERA INDUSTRIES, NEW DELHI	
PARTY'S DRAWING No.	AS PER DRAWING ALU. SPECIAL TEE PROFILE	
ALLOY & TEMPER	6063 T6	PRODUCT CODE:-056
		HSN CODE:- 76042990
DESCRIPTION	ARCHITECTURAL MISC. SECTION (ALU. SPECIAL TEE PROFILE)	