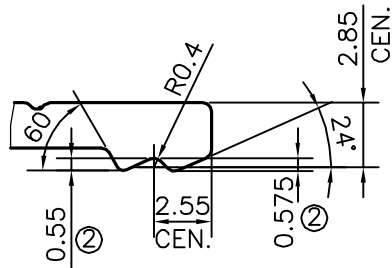
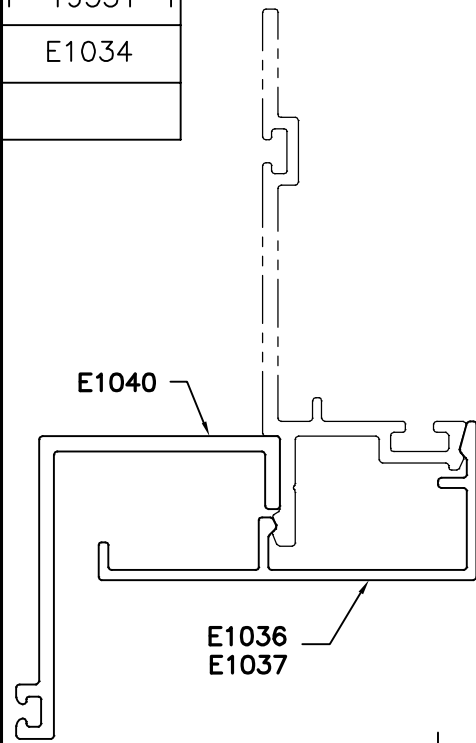
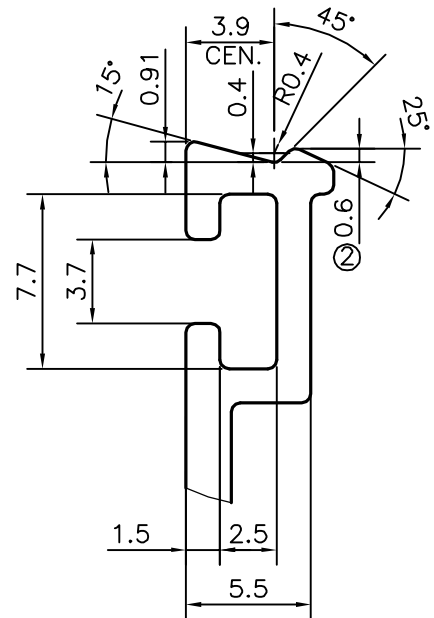


P-19331-1

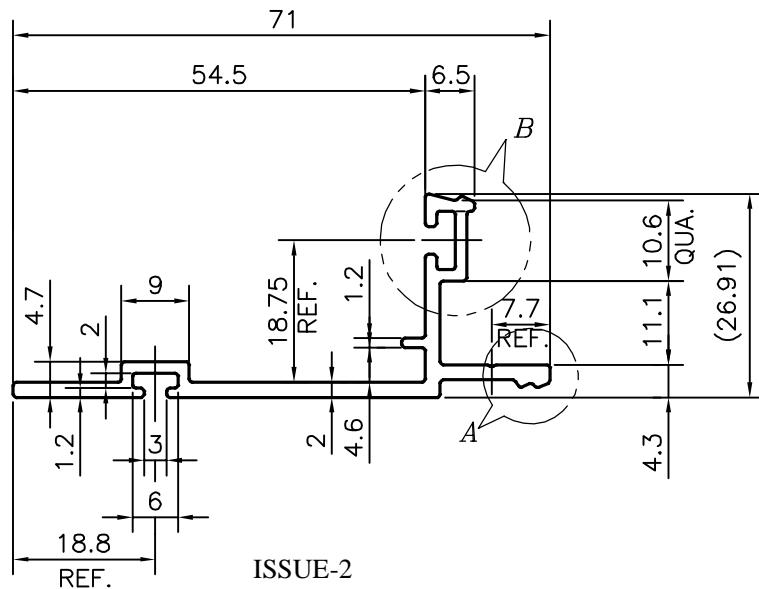
E1034



DETAIL OF "A"  
SCALE 3:1



DETAIL OF "B"  
SCALE 3:1



ISSUE-2

MATCHING PLACES CHANGED AS PER  
MATCHING PROFILES

TOLERANCES ON OVERALL WIDTHS & WIDTHS ACROSS FLATS OF BARS, & REGULAR SECTIONS

UPTO 6.40mm - ±0.20	UPTO 32.0mm - ±0.38	UPTO 120.0mm - ±0.85	<b>1. STRAIGHTNESS=1.0mm/M</b> <b>2. TWIST=1.0mm/M</b> <b>3. ANGULARITY= ±1'</b> <b>4. FLATNESS =0.007xWIDTH</b>
UPTO 10.0mm - ±0.23	UPTO 50.0mm - ±0.46	UPTO 160.0mm - ±1.02	
UPTO 12.0mm - ±0.25	UPTO 60.0mm - ±0.53	UPTO 200.0mm - ±1.14	
UPTO 16.0mm - ±0.28	UPTO 80.0mm - ±0.69	UPTO 250.0mm - ±1.40	
UPTO 25.0mm - ±0.30	UPTO 100.0mm - ±0.75	UPTO 300.0mm - ±1.65	

PLEASE SPECIFY THE EXPOSED SURFACE IN THE DRAWING WHEREVER BETTER FINISH REQUIRED.

 SYMBOL OF QUALITY AN ISO 9001 COMPANY	<b>JINDAL ALUMINIUM LTD.</b> BANGALORE-560073 (INDIA)	DRAWN	NAME	DATE
		CHECKED	DARPAN	26-04-2019
1. ALL DIMENSIONS ARE IN mm. 2. ROUND OFF ALL SHARP CORNERS WITH 0.40 mm. 3. TOLERANCES WILL BE AS PER IS:3965-1981 , UNLESS OTHERWISE SPECIFIED		APPROVED	B.NATARAJA	27-04-2019
		SCALE		1:1
PARTY'S NAME ALUFIT (INDIA) PVT. LTD.,BANGALORE		AREA mm <sup>2</sup>		221.754
		PERIMETER mm.		239.458
PARTY'S DRAWING No. AS PER AUTOCAD DRAWING PROFILE-N-17		WEIGHT kg/m		0.599
		DRAWING No.	SECTION No.	
ALLOY & TEMPER 6063 T6		P-19331-1		-
		E1034		E1034-ISSUE-2
DESCRIPTION PRESSURE PLATE-3				