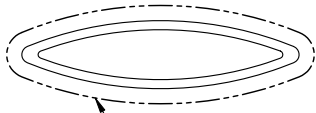
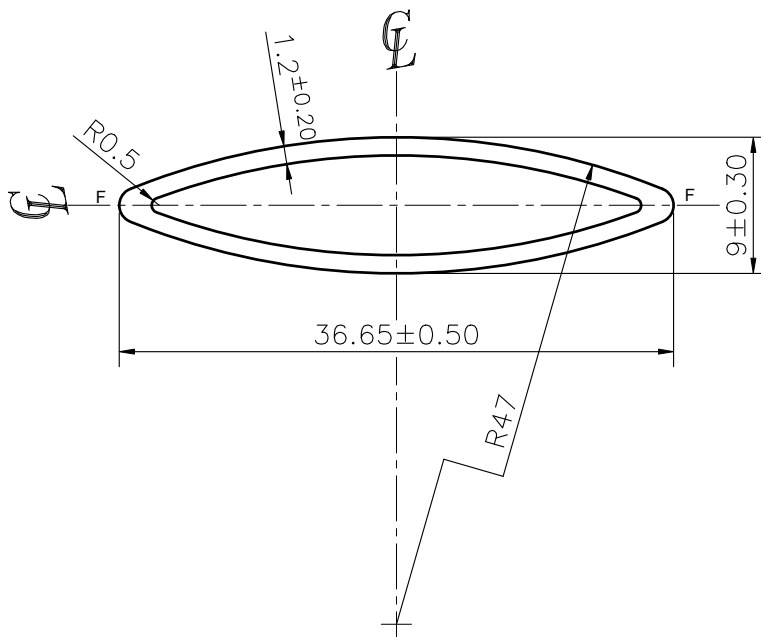



P-JAL-B-743-2	<div><p>EXPOSED SURFACE</p><p>SCALE 1:1</p></div>
E104050	



NOTE:-  
F= FULL RADIUS (2 PLACES)

1. STRAIGHTNESS= 1.7mm/M
2. TWIST= 1.7mm/M
3. ANGULARITY=  $\pm 2^\circ$
4. FLATNESS= 0.007xWIDTH

Q01976  
CONTROLLED COPY

<div><p>SYMBOL OF QUALITY AN ISO 9001 COMPANY</p></div> <div><p><b>JINDAL ALUMINIUM LTD.</b></p><p>BHIWADI-301019 (INDIA)</p></div>			NAME	DATE
		DRAWN	ASHUTOSH	03-05-2025
		CHECKED	PARVESH	16-06-2025
		APPROVED	J.N.RAI	16-06-2025
<div><p>1. ALL DIMENSIONS ARE IN mm.</p><p>2. ROUND OFF ALL SHARP CORNERS WITH 0.40 mm.</p><p>3. TOLERANCES WILL BE AS PER BS:EN-12020-2 , UNLESS OTHERWISE SPECIFIED</p></div> <div><p>PARTY'S NAME</p><p>GROZ BECKERT ASIA PVT. LTD., CHANDIGARH</p></div> <div><p>PARTY'S DRAWING No.</p><p>AS PER DRAWING-2511-060402-0000</p></div> <div><p>ALLOY &amp; TEMPER</p><p>AlMgSi0.5 F25</p><div><p>PRODUCT CODE:-013</p><p>HSN CODE:- 76042100</p></div></div> <div><p>DESCRIPTION</p><p>MISC. TUBE</p></div>		SCALE		2:1
		AREA mm <sup>2</sup>		89.4
		PERIMETER mm.		77.679
		WEIGHT kg/m		0.241
		DRAWING No.		SECTION No.
		P-JAL-B-743-2	7000004352	
		E104050	E104050	