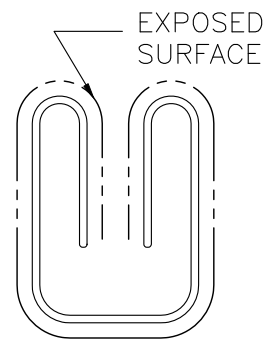
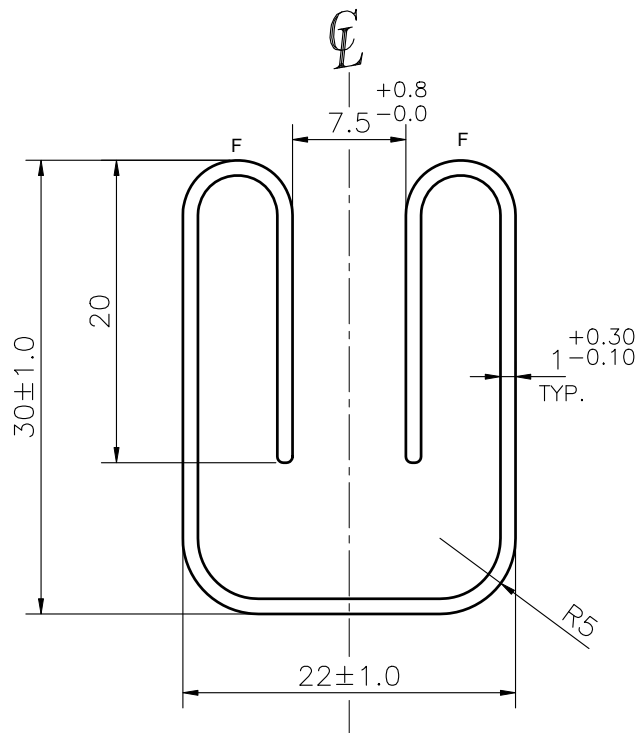


P-JAL-B-1018-1

E104053



SCALE 1:1



NOTE:-

F= FULL RADIUS (2 PLACES)

1. STRAIGHTNESS= 1.7mm/M
2. TWIST= 1.7mm/M
3. ANGULARITY= $\pm 2^\circ$
4. FLATNESS= 0.007xWIDTH

Q03239

CONTROLLED COPY



SYMBOL OF QUALITY
AN ISO 9001 COMPANY

JINDAL ALUMINIUM LTD.
BHIWADI-301019 (INDIA)

	NAME	DATE
DRAWN	ASHUTOSH	03-05-2025
CHECKED	PARVESH	16-06-2025
APPROVED	J.N.RAI	16-06-2025
SCALE		2:1
AREA mm ²		121.135
PERIMETER mm.		243.86
WEIGHT kg/m		0.327
DRAWING No.		SECTION No.
P-JAL-B-1018-1		7000004356
E104053		E104053

1. ALL DIMENSIONS ARE IN mm.
2. ROUND OFF ALL SHARP CORNERS WITH 0.40 mm.
3. TOLERANCES WILL BE AS PER BS:EN-12020-2 , UNLESS OTHERWISE SPECIFIED

PARTY'S NAME	GROZ BECKERT	
PARTY'S DRAWING No.	AS PER DRAWING 2511-060401-0000	
ALLOY & TEMPER	6063 T66	PRODUCT CODE:-085 HSN CODE:- 76042990
DESCRIPTION	INDUSTRIAL SECTION	