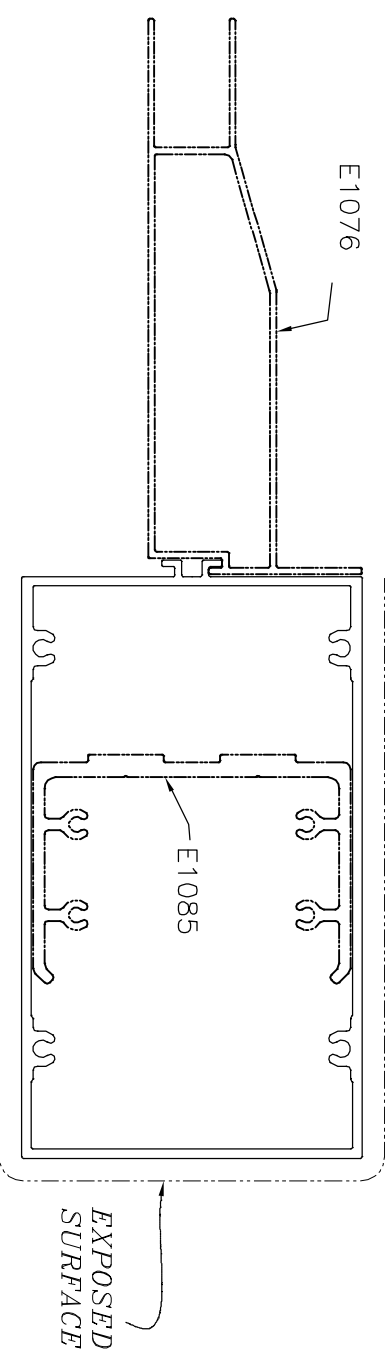
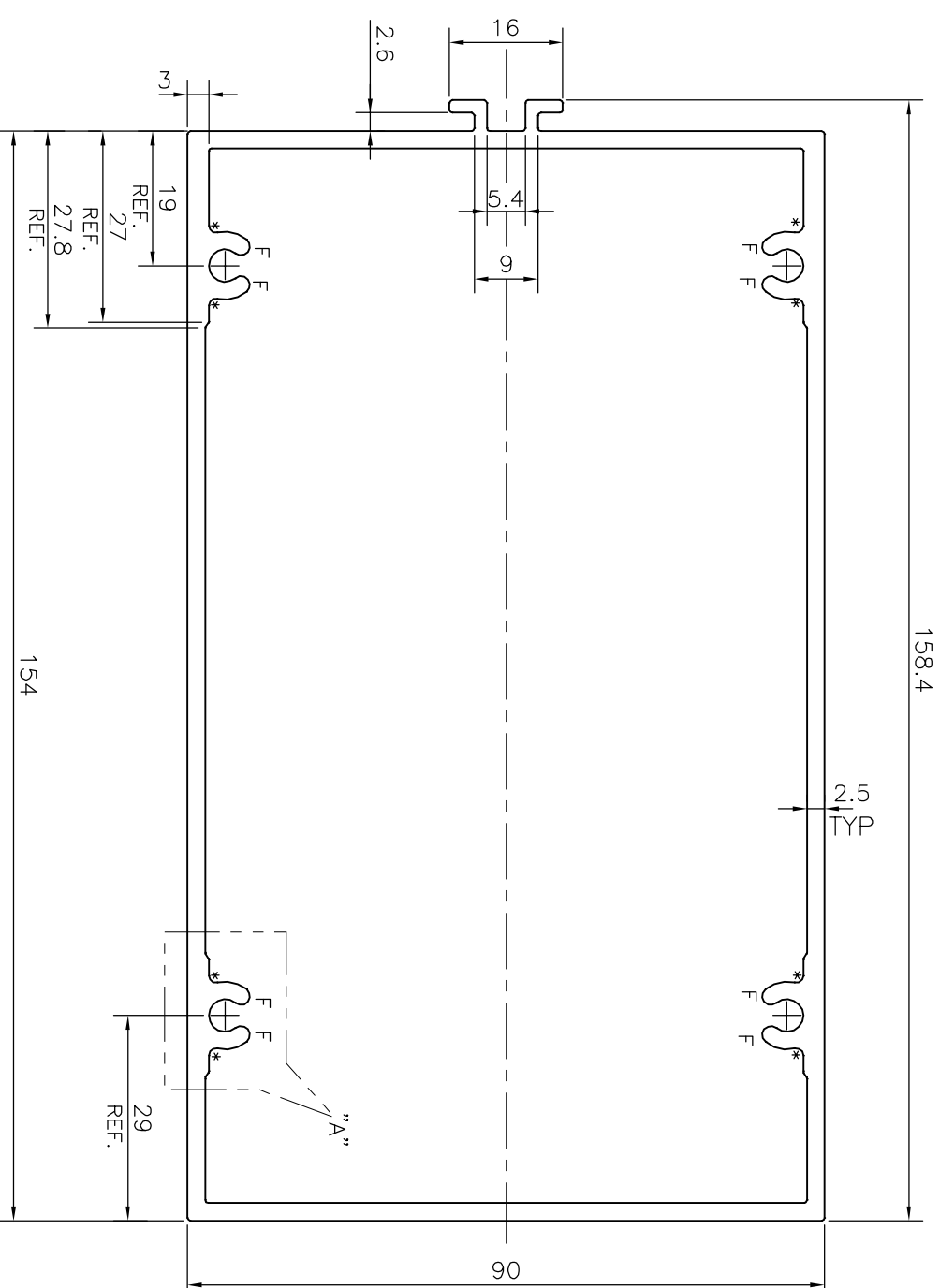
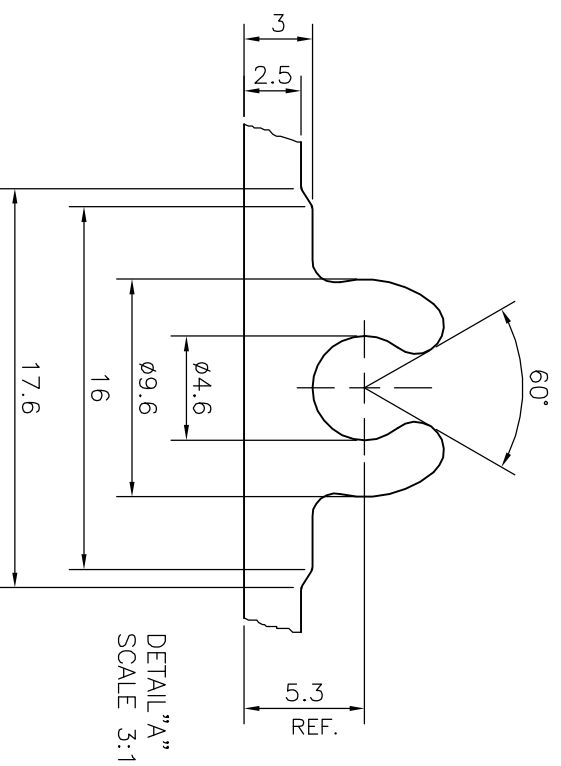


P-19157-1


E1068



F = FULL RADIUS (8 PLACES)
* = RADIUS 1.0 (8 PLACES)

TOLERANCES ON OVERALL WIDTHS & WIDTHS ACROSS FLATS OF BARS, & REGULAR SECTIONS

UPTO 6.40mm - ±0.20	UPTO 32.0mm - ±0.38	UPTO 120.0mm - ±0.85
UPTO 10.0mm - ±0.23	UPTO 50.0mm - ±0.46	UPTO 160.0mm - ±1.02
UPTO 12.0mm - ±0.25	UPTO 60.0mm - ±0.53	UPTO 200.0mm - ±1.14
UPTO 16.0mm - ±0.28	UPTO 80.0mm - ±0.69	UPTO 250.0mm - ±1.40
UPTO 25.0mm - ±0.30	UPTO 100.0mm - ±0.75	UPTO 300.0mm - ±1.65

 SYMBOL OF QUALITY AN ISO 9001 COMPANY		JINDAL ALUMINIUM LTD. BANGALORE-560073 (INDIA)		DRAWN	NAME	DATE
1. ALL DIMENSIONS ARE IN mm. 2. ROUND OFF ALL SHARP CORNERS WITH 0.40 mm. 3. TOLERANCES WILL BE AS PER IS:6477-1983 UNLESS OTHERWISE SPECIFIED				CHECKED	J.P. KAUSHIK	27-02-2019
PARTY'S NAME		ALUFIT (INDIA) PVT. LTD., BANGALORE		APPROVED	B. NATARAJA	11-04-2019
PARTY'S DRAWING No.		4SR-DIE-24		SCALE	1:1	
ALLOY & TEMPER		6063 T6		AREA mm ²	1380.199	
DESCRIPTION		MID TRANSOM-GRANITE LOCATION		PERIMETER mm.	516.853	
				WEIGHT kg/m	3.727	
				DRAWING No.	P-19157-1	
				SECTION No.	-	
					E1068	
					E1068	