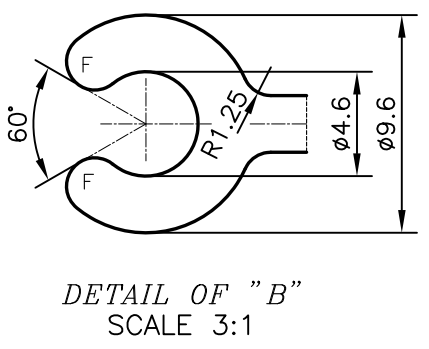
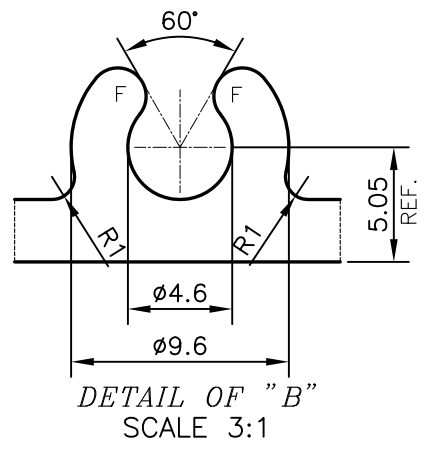
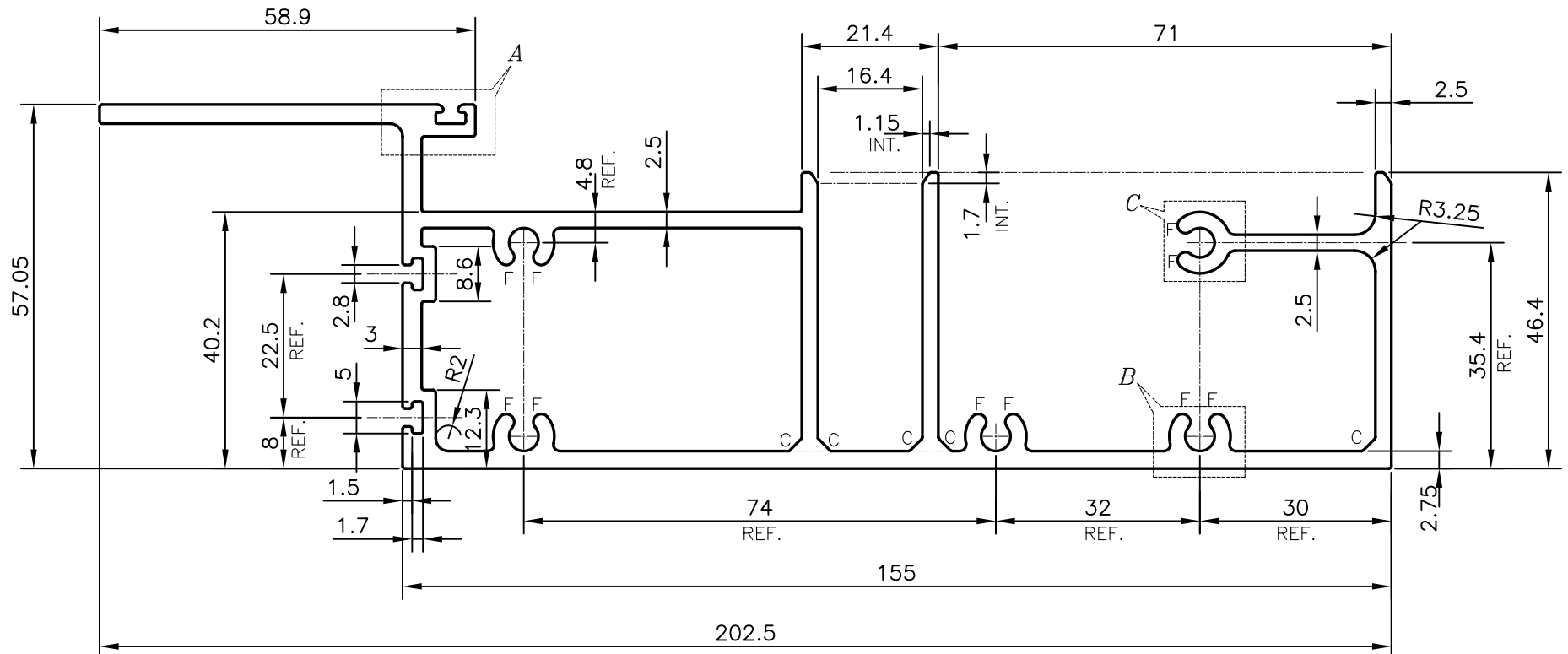
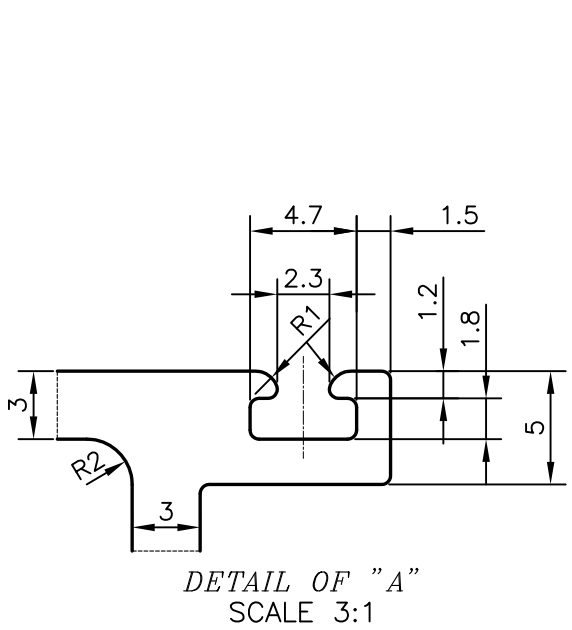
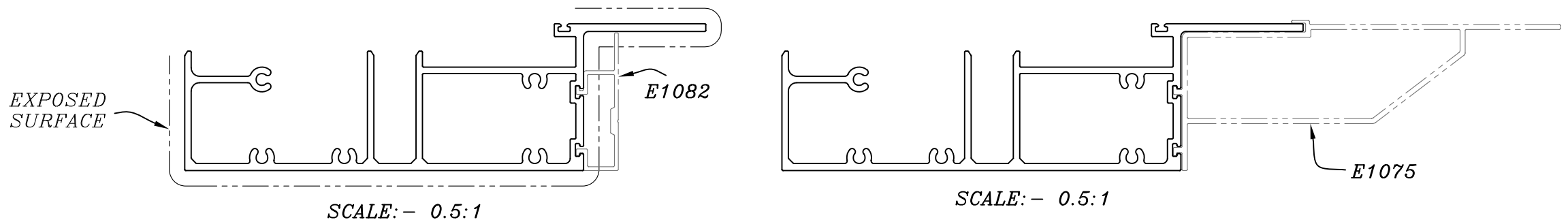


P-19181-1
E1072



F = FULL RADIUS (10 PLACES)
C = CHAMFER 2x45° (5 PLACES)

TOLERANCES ON OVERALL WIDTHS & WIDTHS ACROSS FLATS OF BARS, & REGULAR SECTIONS			
UPTO 6.40mm - ±0.20	UPTO 32.0mm - ±0.38	UPTO 120.0mm - ±0.85	1. STRAIGHTNESS=1.0mm/M 2. TWIST=1.0mm/M 3. ANGULARITY= ±1° 4. FLATNESS =0.007xWIDTH
UPTO 10.0mm - ±0.23	UPTO 50.0mm - ±0.46	UPTO 160.0mm - ±1.02	
UPTO 12.0mm - ±0.25	UPTO 60.0mm - ±0.53	UPTO 200.0mm - ±1.14	
UPTO 16.0mm - ±0.28	UPTO 80.0mm - ±0.69	UPTO 250.0mm - ±1.40	
UPTO 25.0mm - ±0.30	UPTO 100.0mm - ±0.75	UPTO 300.0mm - ±1.65	

<p>SYMBOL OF QUALITY AN ISO 9001 COMPANY</p>	<p>JINDAL ALUMINIUM LTD. BANGALORE-560073 (INDIA)</p>	NAME	DATE
		DRAWN	PARVESH
<p>1. ALL DIMENSIONS ARE IN mm. 2. ROUND OFF ALL SHARP CORNERS WITH 0.40 mm. 3. TOLERANCES WILL BE AS PER IS:6477-1983, UNLESS OTHERWISE SPECIFIED</p>		CHECKED	
		APPROVED	B.NATARAJA
<p>PARTY'S NAME ALUFIT (INDIA) PRIVATE LIMITED, BANGALORE</p>		SCALE	1:1
		AREA mm ²	1491.803
<p>PARTY'S DRAWING No. AS PER AUTOCAD DRAWING-4SR-DIE-06</p>		PERIMETER mm.	856.483
		WEIGHT kg/m	4.028
<p>ALLOY & TEMPER 6063 T6</p>		DRAWING No.	SECTION No.
		P-19181-1	-
<p>DESCRIPTION CURTAIN WALL SECTION-SILL TRANSOM</p>		E1072	E1072