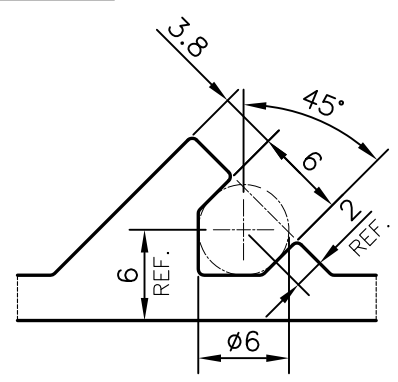
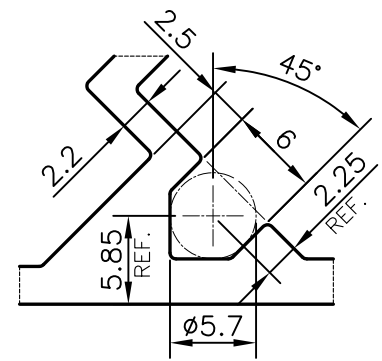


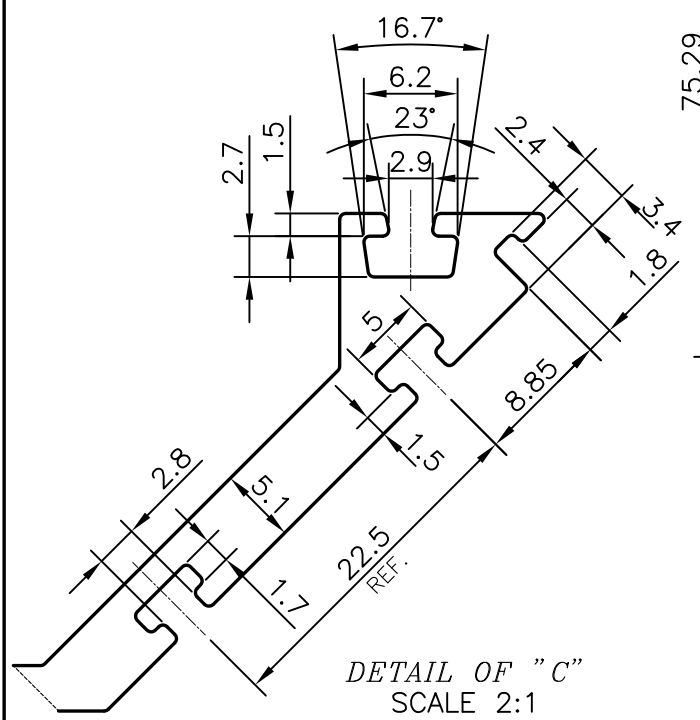
P-19183-1  
E1074



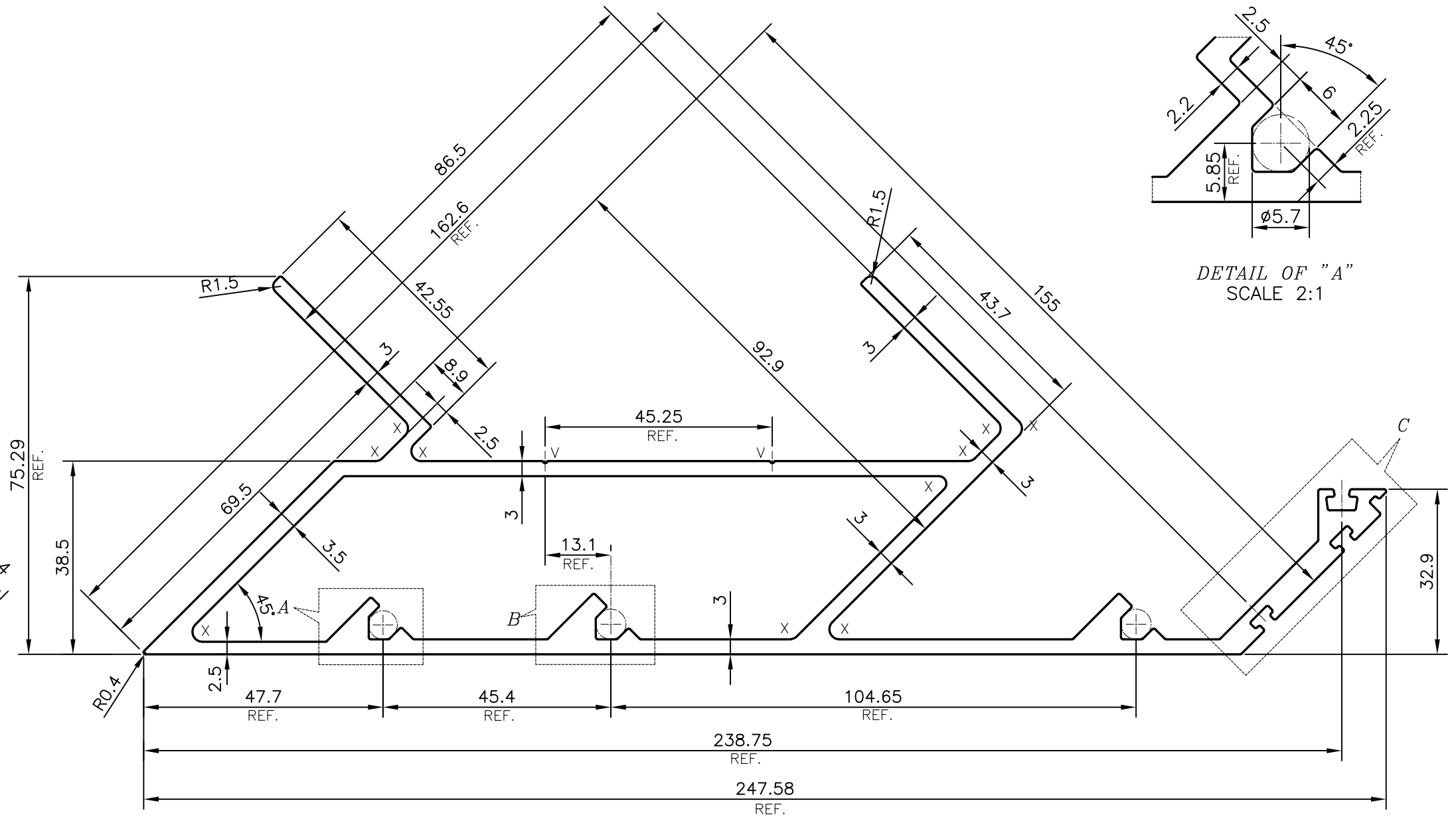
DETAIL OF "B"  
SCALE 2:1



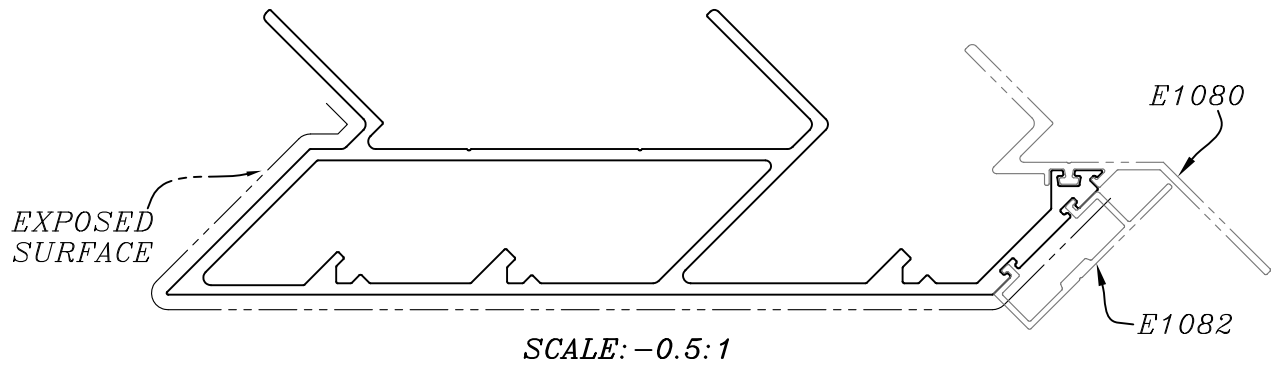
DETAIL OF "A"  
SCALE 2:1



DETAIL OF "C"  
SCALE 2:1



X = RADIUS 2 mm. (10 PLACES)  
V = VEE GROOVE 0.4x90° (2 PLACES)




SCALE: -0.5:1

TOLERANCES ON OVERALL WIDTHS & WIDTHS ACROSS FLATS OF BARS, & REGULAR SECTIONS

UPTO 6.40mm - ±0.20	UPTO 32.0mm - ±0.38	UPTO 120.0mm - ±0.85
UPTO 10.0mm - ±0.23	UPTO 50.0mm - ±0.46	UPTO 160.0mm - ±1.02
UPTO 12.0mm - ±0.25	UPTO 60.0mm - ±0.53	UPTO 200.0mm - ±1.14
UPTO 16.0mm - ±0.28	UPTO 80.0mm - ±0.69	UPTO 250.0mm - ±1.40
UPTO 25.0mm - ±0.30	UPTO 100.0mm - ±0.75	UPTO 300.0mm - ±1.65

1. STRAIGHTNESS=1.0mm/M
2. TWIST=1.0mm/M
3. ANGULARITY= ±1°
4. FLATNESS =0.007xWIDTH

 SYMBOL OF QUALITY AN ISO 9001 COMPANY	<b>JINDAL ALUMINIUM LTD.</b> BANGALORE-560073 (INDIA)	NAME	DATE
		DRAWN	PARVESH 27-02-2019
		CHECKED	
		APPROVED	B.NATARAJA 11-04-2019
		SCALE	1:1
		AREA mm <sup>2</sup>	2016.535
		PERIMETER mm.	869.903
		WEIGHT kg/m	5.445
PARTY'S NAME	ALUFIT (INDIA) PRIVATE LIMITED, BANGALORE	DRAWING No.	SECTION No.
PARTY'S DRAWING No.	AS PER AUTOCAD DRAWING-4SR-DIE-10	P-19183-1	-
ALLOY & TEMPER	6063 T6	E1074	E1074
DESCRIPTION	CURTAIN WALL SECTION-CORNER MALE MULLION		