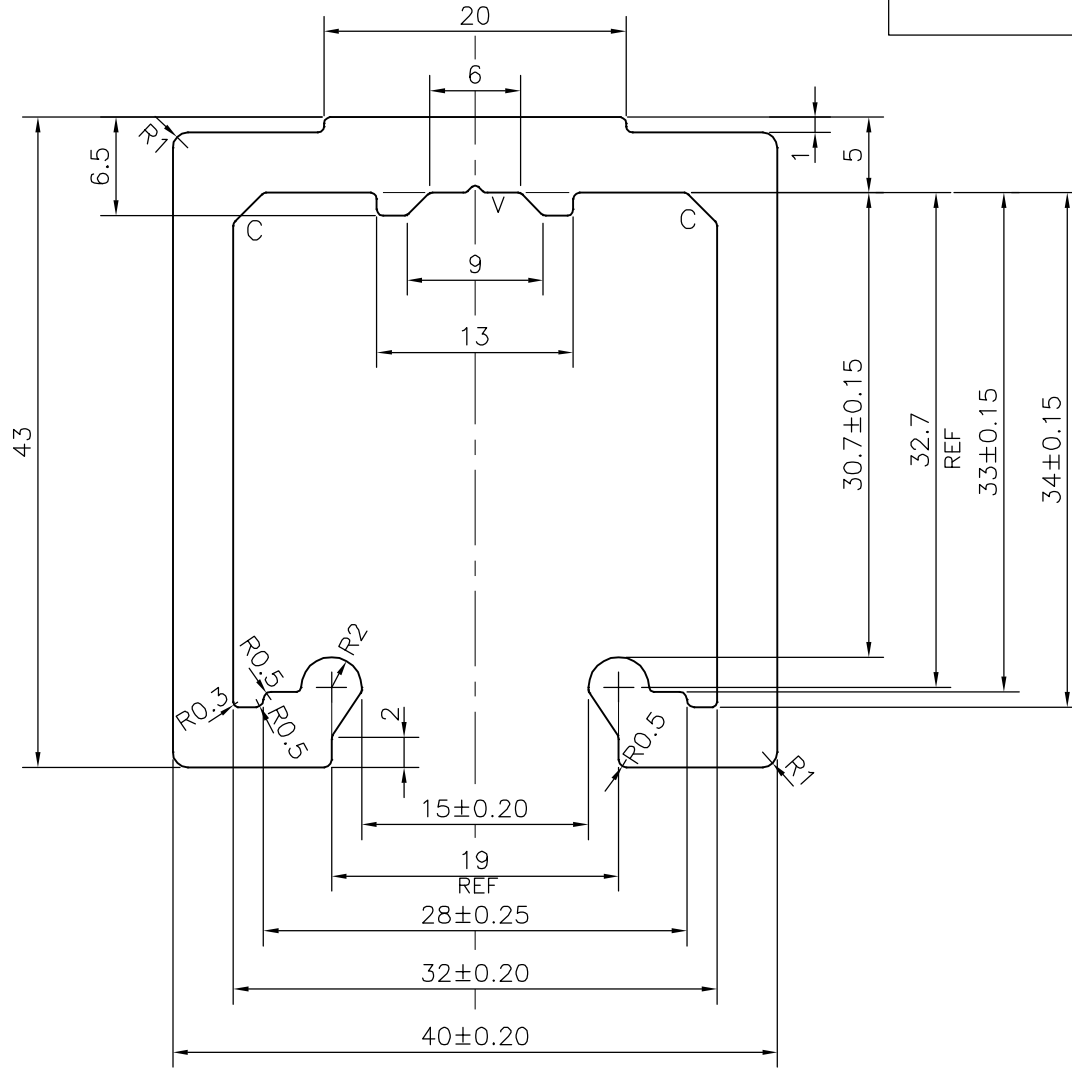


P-19468

E1115

EXPOSED SURFACE



V = V GROOVE 0.5x90° (1 PLACE)  
 C = CHAMFER 2x45° (2 PLACES)



SYMBOL OF QUALITY  
 AN ISO 9001 COMPANY

**JINDAL ALUMINIUM LTD.**  
 BANGALORE-560073 (INDIA)

	NAME	DATE
DRAWN	J.P.KAUSHIK	25-04-2019
CHECKED		
APPROVED	B.NATARAJA	20-05-2019

1. ALL DIMENSIONS ARE IN mm.
2. ROUND OFF ALL SHARP CORNERS WITH 0.40 mm.
3. TOLERANCES WILL BE AS PER IS:3965-1981, UNLESS OTHERWISE SPECIFIED

SCALE	2:1
AREA mm <sup>2</sup>	576.964
PERIMETER mm.	280.172
WEIGHT kg/m	1.558

PARTY'S NAME	HAFELE INDIA PVT. LTD., MUMBAI	DRAWING No.	P-19468	SECTION No.	-
PARTY'S DRAWING No.	04-150417-FZ-0401		E1115		E1115
ALLOY & TEMPER	6060 T6				
DESCRIPTION	MISC. SECTION				