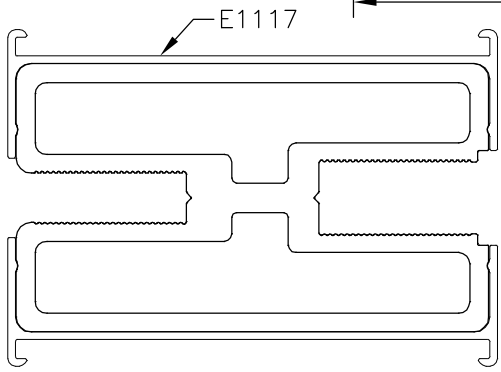
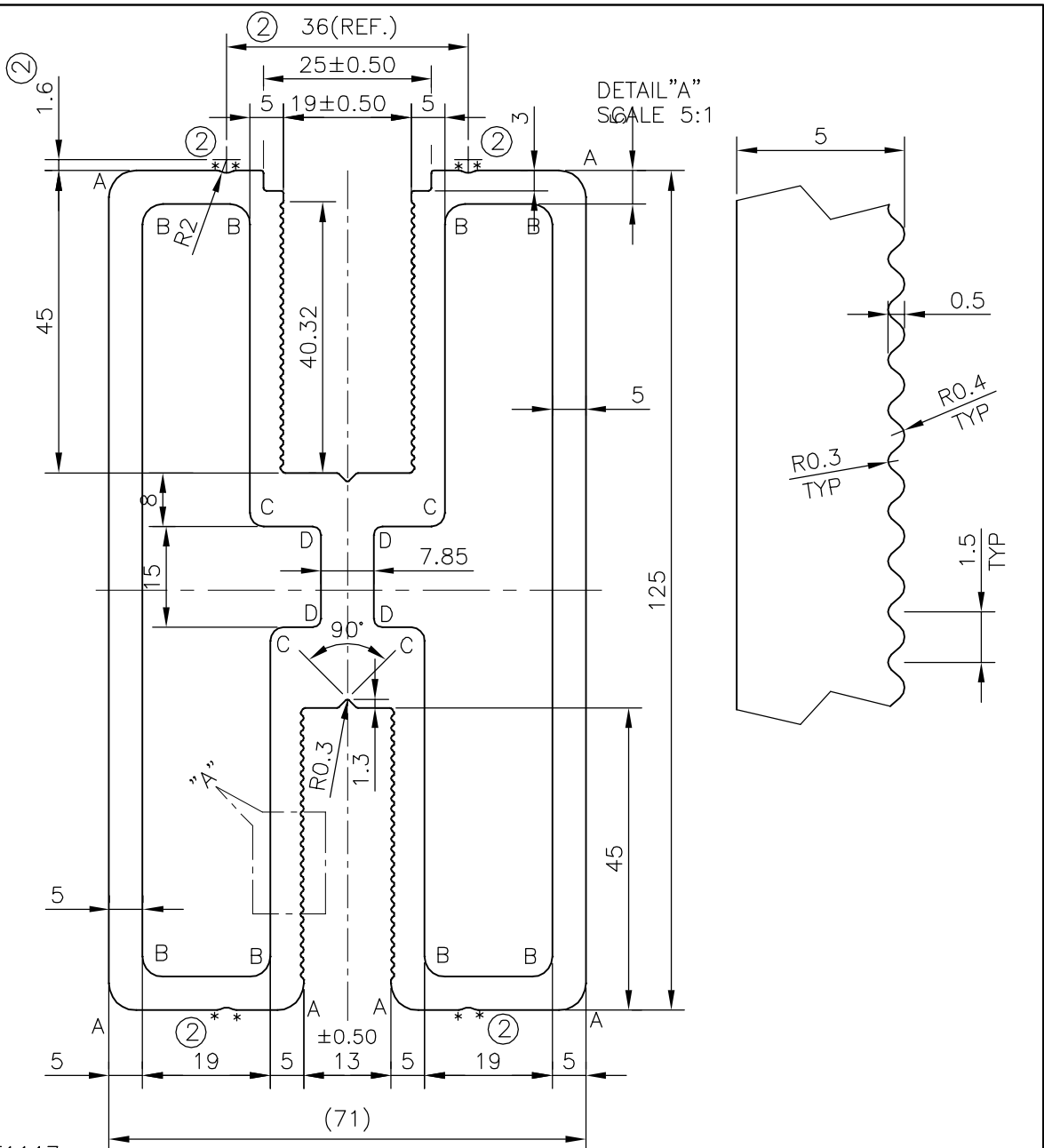


P-10244-3
X1344
27968
E1134




- A = 4.00mm RADIUS (6 PLACES)
- B = 3.00mm RADIUS (8 PLACES)
- C = 2.00mm RADIUS (4 PLACES)
- D = 1.25mm RADIUS (4 PLACES)
- * = 0.8mm RADIUS (8 PLACES)

ISSUE-2

GROOVE ADDED 4 Nos
DIMENSION ADDED 36 mm & 1.6 mm

WEIGHT CHANGED FROM 8.256 TO 8.249 kg/m

 SYMBOL OF QUALITY AN ISO 9001 COMPANY	JINDAL ALUMINIUM LTD. BANGALORE-560073 (INDIA)	NAME	DATE
		DRAWN	J.P.KAUSHIK
		CHECKED	
		APPROVED	B.NATARAJA
		SCALE	1:1
		AREA mm ²	3055.185
		PERIMETER mm.	604.056
		WEIGHT kg/m	8.249
		DRAWING No.	SECTION No.
		P-10244-3	-
		X1344	X1344
		27968	27968(ISSUE-2)
		E1134	E1134
PARTY'S NAME	MERINO INDUSTRIES LTD., GHAZIABAD		
PARTY'S DRAWING No.	MIL/A.L.T.R/R-01		
ALLOY & TEMPER	6063 T5		
DESCRIPTION	ATHENA LITE TOP RAIL		

1. ALL DIMENSIONS ARE IN mm.
2. ROUND OFF ALL SHARP CORNERS WITH 0.40 mm.
3. TOLERANCES WILL BE AS PER IS:6477-1983 UNLESS OTHERWISE SPECIFIED