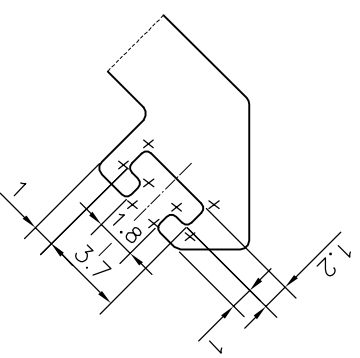
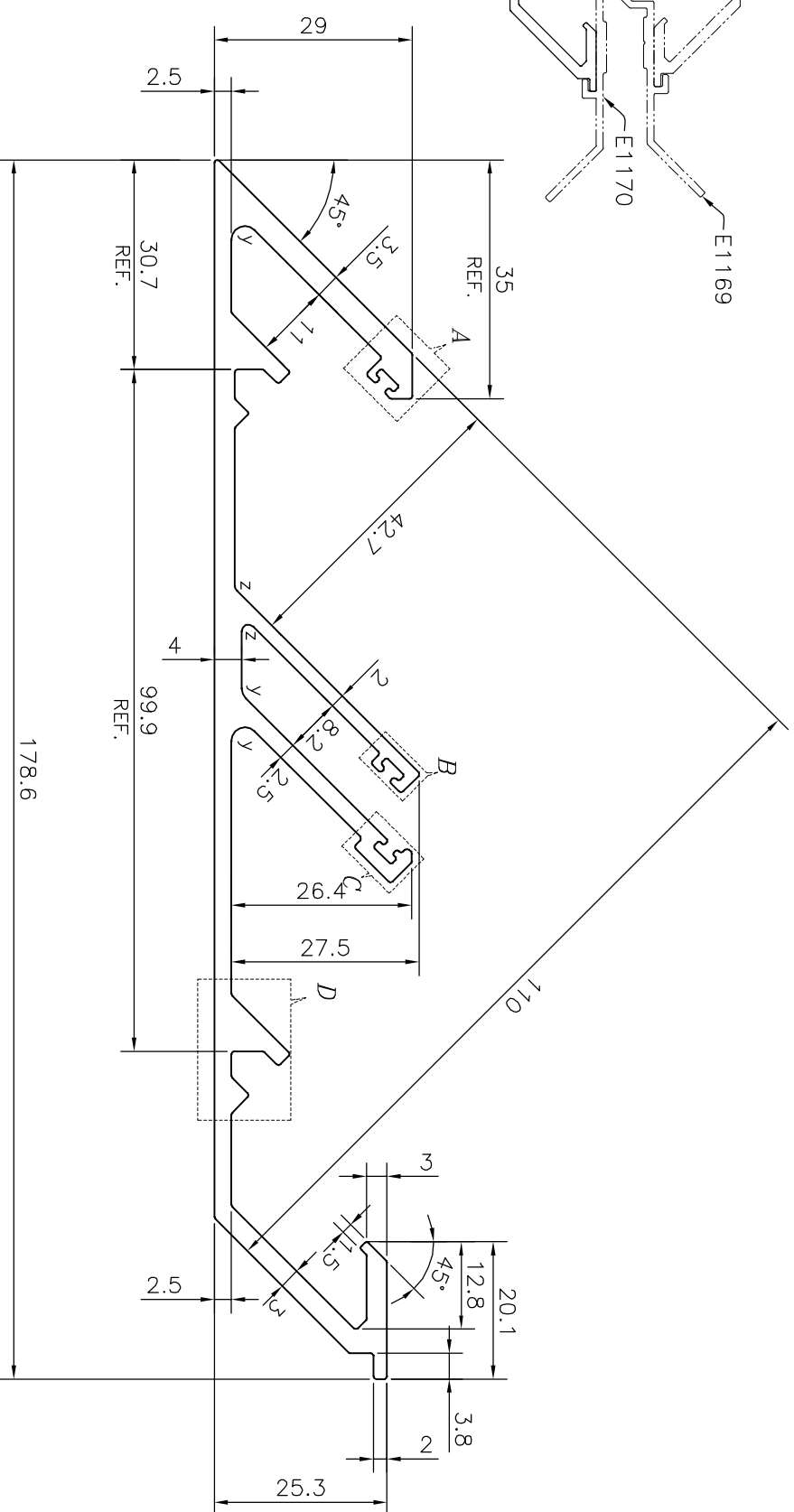
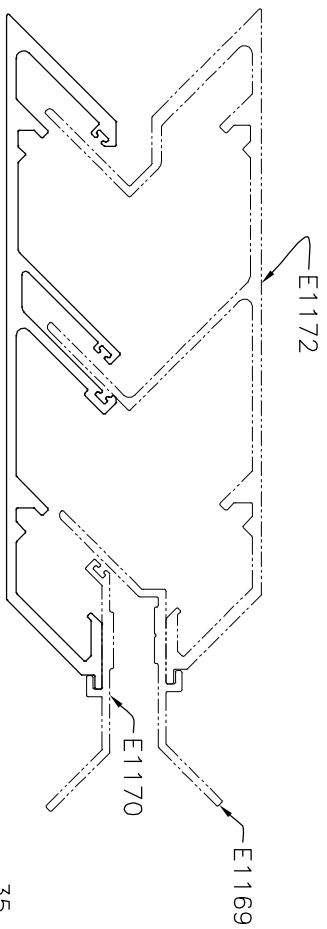
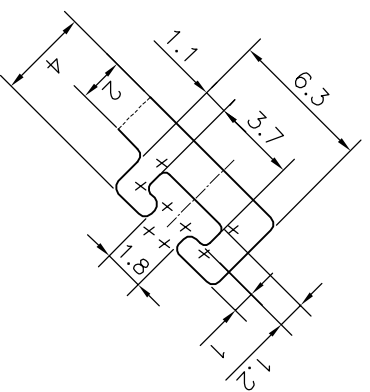


P-20037

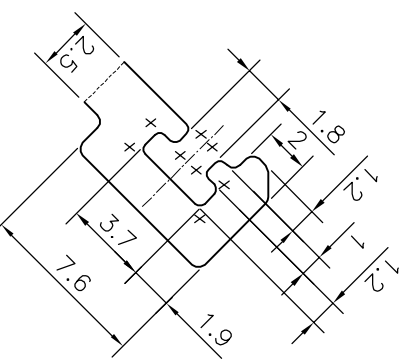
E1173



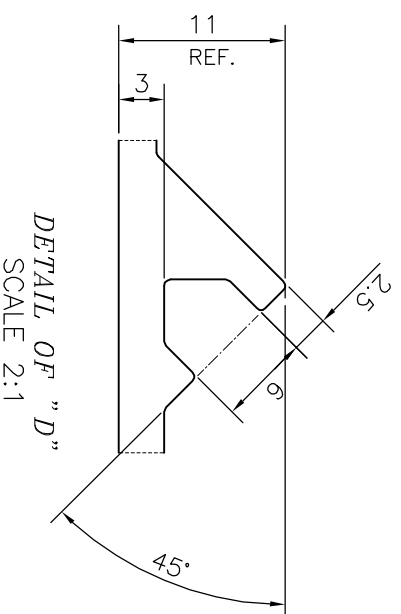
DETAIL OF "A"  
SCALE 3:1



DETAIL OF "B"  
SCALE 3:1



DETAIL OF "C"  
SCALE 3:1



DETAIL OF "D"  
SCALE 2:1

X = RADIUS 0.3 mm. (24 PLACES)  
Z = RADIUS 1 mm. (2 PLACES)  
Y = RADIUS 2 mm. (3 PLACES)

TOLERANCES ON OVERALL WIDTHS & WIDTHS ACROSS FLATS OF BARS, & REGULAR SECTIONS

UPTO 6.40mm - ±0.20	UPTO 32.0mm - ±0.38	UPTO 120.0mm - ±0.85
UPTO 10.0mm - ±0.23	UPTO 50.0mm - ±0.46	UPTO 160.0mm - ±1.02
UPTO 12.0mm - ±0.25	UPTO 60.0mm - ±0.53	UPTO 200.0mm - ±1.14
UPTO 16.0mm - ±0.28	UPTO 80.0mm - ±0.69	UPTO 250.0mm - ±1.40
UPTO 25.0mm - ±0.30	UPTO 100.0mm - ±0.75	UPTO 300.0mm - ±1.65

1. STRAIGHTNESS=1.0mm/M
2. TWIST=1.0mm/M
3. ANGULARITY= ±1°
4. FLATNESS =0.007xWIDTH

<p>SYMBOL OF QUALITY AN ISO 9001 COMPANY</p>	<b>JINDAL ALUMINIUM LTD.</b>	
	BANGALORE-560073 (INDIA)	

1. ALL DIMENSIONS ARE IN mm.
2. ROUND OFF ALL SHARP CORNERS WITH 0.50 mm.
3. TOLERANCES WILL BE AS PER IS:3965-1981 , UNLESS OTHERWISE SPECIFIED

PARTY'S NAME	ALUFIT (INDIA) PRIVATE LIMITED, BANGALORE	DRAWN	NAME	DATE
PARTY'S DRAWING No.	OP-DIE-16	CHECKED	J.P.KAUSHIK	20-08-2019
ALLOY & TEMPER	6063 T6	APPROVED	B.NATARAJA	06-09-2019
DESCRIPTION	CURTAIN WALL SECTION-EXT. CORNER FEMALE MULLION	SCALE	1:1	
		AREA mm <sup>2</sup>	986.673	
		PERIMETER mm.	677.934	
		WEIGHT kg/m	2.664	
		DRAWING No.	P-20037	SECTION No.
			E1173	E1173