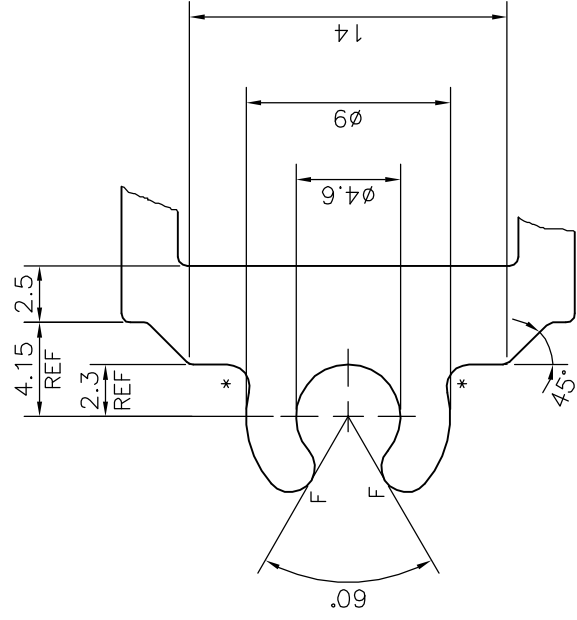
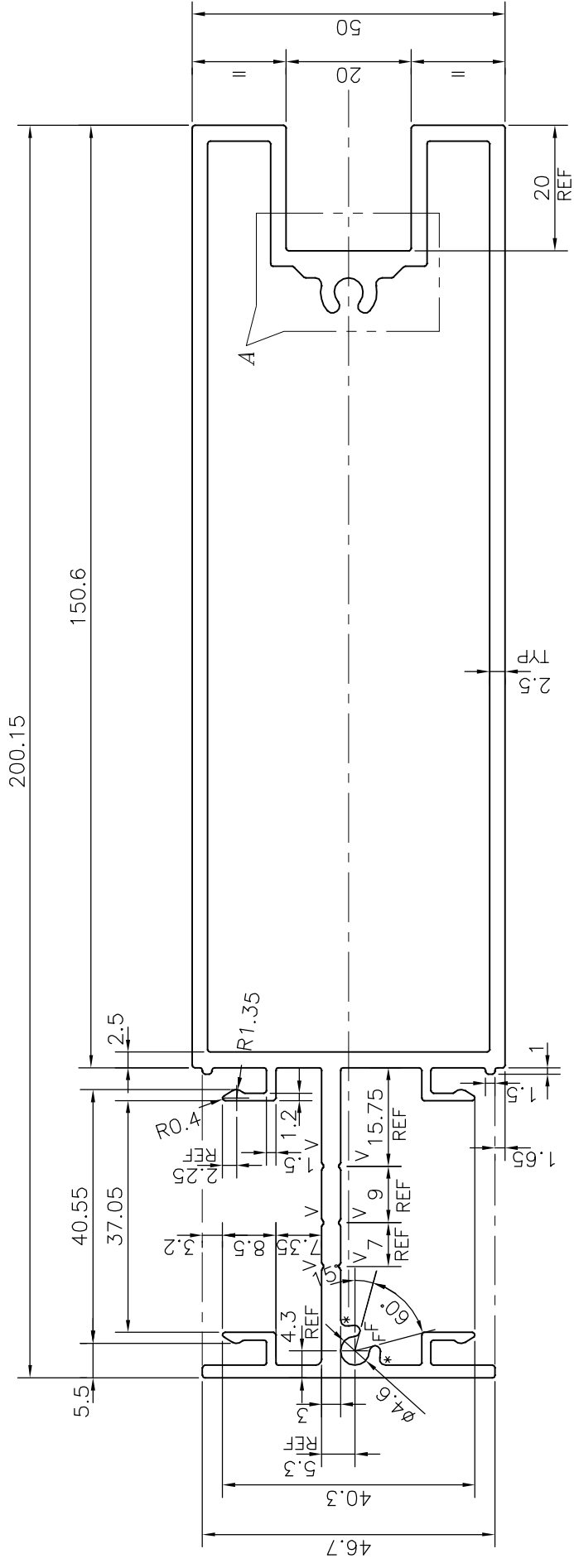


P-20038-1

E1182



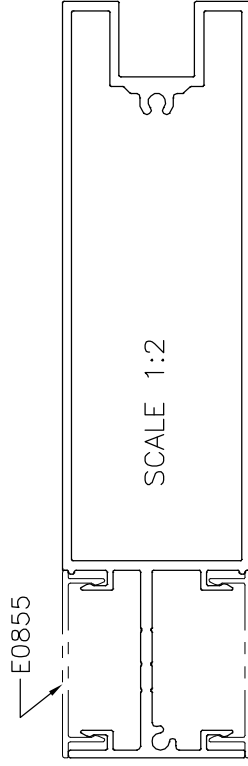
DETAIL OF "A"
SCALE 3:1

V = V GROOVE 0.3x90°(6 PLACES)
 F = FULL RADIUS (4 PLACES)
 * = 1.0 RADIUS (4 PLACES)

TOLERANCES ON OVERALL DIMENSIONS OF HOLLOW SECTIONS

UPTO 20.0mm - ±0.30	UPTO 80.0mm - ±0.70	UPTO 180.0mm - ±1.27	1. STRAIGHTNESS=1.0mm/M
UPTO 30.0mm - ±0.38	UPTO 100.0mm - ±0.80	UPTO 200.0mm - ±1.40	2. TWIST=1.0mm/M
UPTO 40.0mm - ±0.45	UPTO 120.0mm - ±0.90	UPTO 225.0mm - ±1.52	3. ANGULARITY= ±1°
UPTO 50.0mm - ±0.52	UPTO 140.0mm - ±1.00		4. FLATNESS =0.007xWIDTH
UPTO 60.0mm - ±0.60	UPTO 160.0mm - ±1.14		

<p>SYMBOL OF QUALITY AN ISO 9001 COMPANY</p>	<p>JINDAL ALUMINIUM LTD. BANGALORE-560073 (INDIA)</p>		<p>NAME: J.P.KAUSHIK DATE: 31-08-2019</p>
			<p>DRAWN: J.P.KAUSHIK CHECKED:</p>
			<p>APPROVED: B.NATARAJA SCALE: 1:1</p>
			<p>DATE: 09-09-2019</p>
<p>1. ALL DIMENSIONS ARE IN mm. 2. ROUND OFF ALL SHARP CORNERS WITH 0.40 mm. 3. TOLERANCES WILL BE AS PER IS:6477-1983 UNLESS OTHERWISE SPECIFIED</p>			
<p>PARTY'S NAME: ALUFIT (INDIA) PVT. LTD., BANGALORE</p>		<p>AREA: 1453.862 mm² PERIMETER: 730.016 mm WEIGHT: 3.925 kg/m</p>	
<p>PARTY'S DRAWING No. OP-DIE-08</p>		<p>DRAWING No. SECTION No. P-20038-1 -</p>	
<p>ALLOY & TEMPER: 6063 T6</p>		<p>E1182</p>	
<p>DESCRIPTION: VERTICAL FIN SECTION</p>			



SCALE 1:2