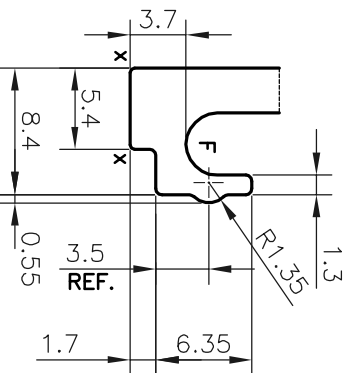
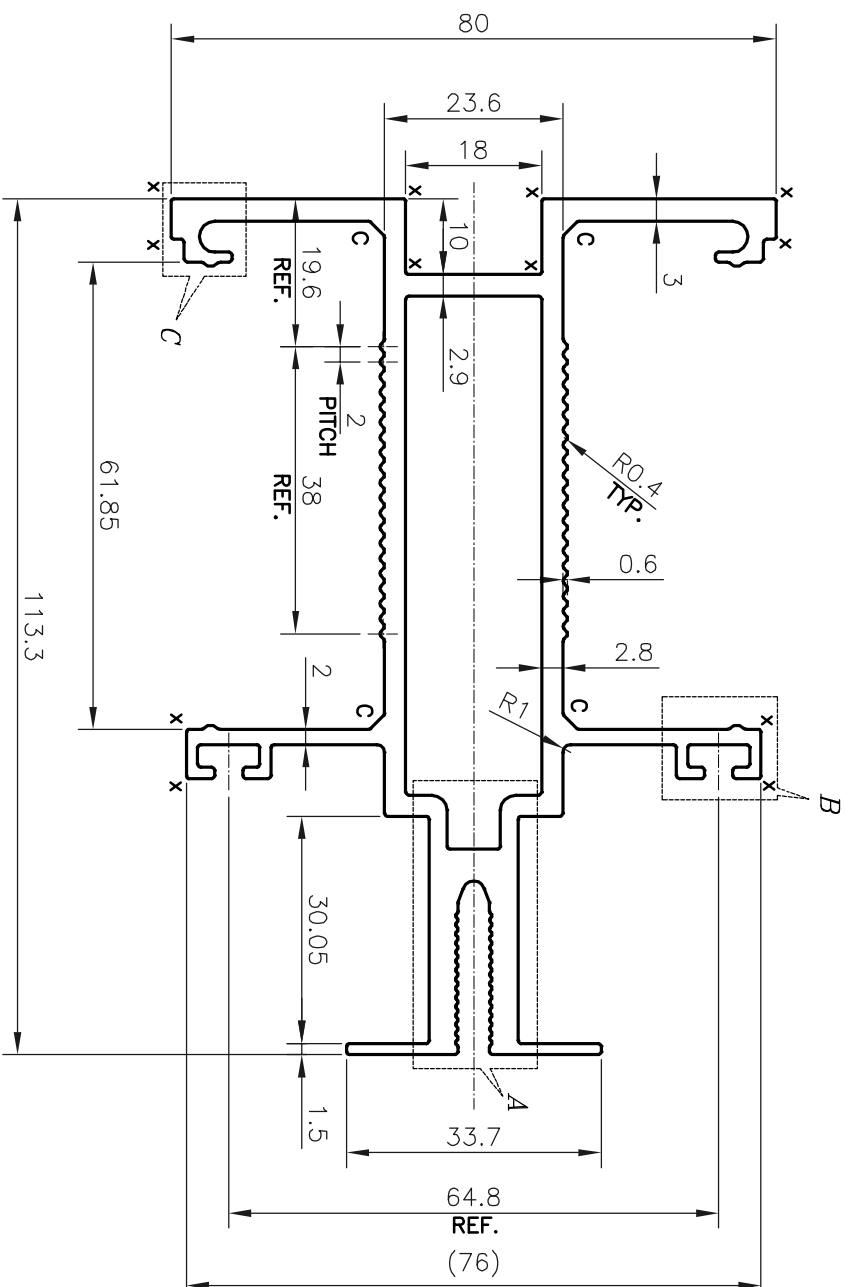
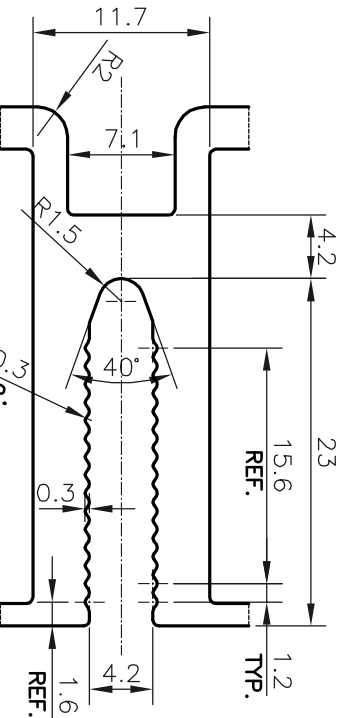


SCALE: - 0.5:1

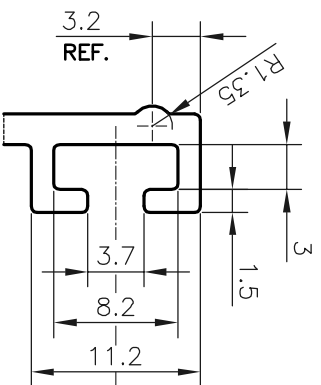


DETAIL OF "D"
SCALE 2:1

F = FULL RADIUS (2 PLACES)
C = CHAMFER 2x45° (4 PLACES)
X = RADIUS 0.3 mm. (12 PLACES)



DETAIL OF "A"
SCALE 2:1




DETAIL OF "B"
SCALE 2:1

DIMENSION OVER UP TO AND INCLUDING	TOLERANCES (EXCEPT OPEN ENDS)	TOLERANCES (OPEN ENDS)
10	±0.15	E≤60
15	±0.20	60≤E<120
30	±0.25	-
45	±0.30	-
60	±0.40	±0.45
90	±0.45	±0.55
120	±0.60	±0.65
150	±0.80	±0.80
180	±1.0	±1.0
240	±1.2	±1.2
300	±1.5	±1.5

NOTE:-
ALUFIT ACCEPT UPTO 0.75 mm/M
(STRAIGHTNESS, TWIST)

1. STRAIGHTNESS=0.50 mm/M
2. TWIST=0.50 mm/M
3. ANGULARITY= ±1°
4. FLATNESS =0.007xWIDTH

 <p>SYMBOL OF QUALITY AN ISO 9001 COMPANY</p>		<p>JINDAL ALUMINIUM LTD. BANGALORE-560073 (INDIA)</p>		DRAWN	NAME	DATE
				CHECKED	PARVESH	27-09-2019
<p>1. ALL DIMENSIONS ARE IN mm. 2. ROUND OFF ALL SHARP CORNERS WITH 0.40 mm. 3. TOLERANCES WILL BE AS PER BS:EN-12020-2, UNLESS OTHERWISE SPECIFIED</p>		<p>PARTY'S NAME ALUFIT (INDIA) PRIVATE LIMITED, BANGALORE</p>		APPROVED	B. NATARAJA	28-09-2019
<p>PARTY'S DRAWING No. AS PER AUTOCAD DRAWING</p>		<p>ALLOY & TEMPER 6063 T6</p>		SCALE	1:1	
<p>DESCRIPTION CURTAIN WALL SECTION-MULLION SECTION</p>		<p>WEIGHT kg/m 3.257</p>		AREA mm ²	1206.274	
<p>DESCRIPTION CURTAIN WALL SECTION-MULLION SECTION</p>		<p>DRAWING No. P-20110-3</p>		PERIMETER mm.	696.578	
<p>DESCRIPTION CURTAIN WALL SECTION-MULLION SECTION</p>		<p>SECTION No. E1196</p>				